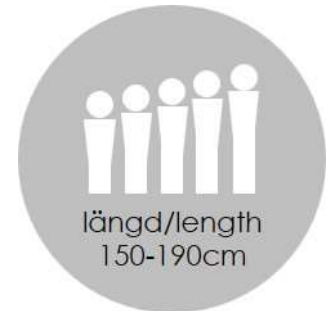


# tutorial

## raglan autumn leaves

EU size 32 - 60

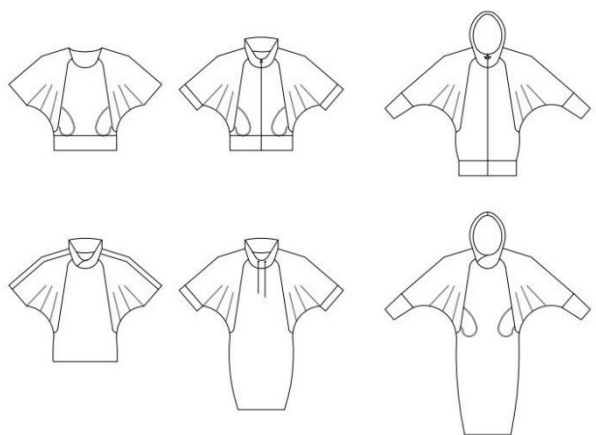


A fun design that is easy to follow and vary.

Choose from four lengths to make your shirt, jacket or dress. With or without two types of cuffs. With or without waist cuff. Hood, wrap hood, collar / wrap collar, side pockets.

The pattern is suitable for stretchy fabrics such as knitwear, jogging but can be used woven fabrics without stretch in sleeves. The model is available spacious but snug across the hips at the dress length.

Seam allowance is not included.



sewingheartdesign.com

# information

## **SALES LICENSE**

Included with the patterns is a sales license. That means that you as individual who sews as a hobby or owns a business have the right to use the patterns to sell clothes. The license applies only for the buyer of the pattern and the license terms cannot be transferred to a third party. Which means that you cannot let another physical or legal person produce clothes on a large scale on your behalf.

## **SEAM ALLOWANCE/HEM NOT INCLUDED**

You should add seam allowance on ALL patterns except where you intend to add binding or if the patterns says otherwise. I recommend that you read through the sewing instructions. Within it are instructions both in picture and text which will facilitate your sewing.

## **PAPER PATTERN**

The paper patterns are sensitive to moisture and tear. Handle with care. On certain paper patterns the parts are split due to lack of space. Read the instructions carefully to know if they are to be stenciled and put together in a certain way. When you sell your pattern, you must destroy all copies that you have made.

## **PDF-PATTERN**

Files are downloaded directly from your page on Etsy – after purchase they will be added to “purchases”. They are PDF-files and I recommend a pdf-reader with a setting to switch to “real size” and “automatic portrait/landscape” when printing. For example, Adobe Reader or PDF X-change. It is important to measure the control box so that it is exactly 30mm \* 30mm or your garment might not end up the way you imagine. PDF is easy to print. Utilize the layers to only print the page you want to sew and cut it directly. There are arrows on the pattern and they should align towards each other when you put the pattern together. There is also an overview of the pattern where you can see how the different pages should be positioned.

Because a PDF-pattern is a digital product there are no refunds or returns.

The PDF-Pattern may not be copied and/or sold/donated to a third party.

## **LICENSE**

When you purchase a pattern, you agree to an agreement with Sewingheartdesign that you accept the license with its terms and conditions. Violation of this agreement will be brought before the Swedish court.

I hope you will be satisfied with the pattern! Good luck with the sewing!

/Marie Sidén

Sewingheartdesign

# fabric requirements

Fabric usage is calculated on washed/shrunk fabric 160cm wide, including seam allowance (1cm) and hem (3cm).

BODY LENGTH 150/160/170/180/190 cm

## FRONT PIECE / BACK PIECE

SIZE	32-56	58-60
WAIST LENGTH	70/75/75/80/80	130/135/140/145/150
TUNIC	90/90/95/95/95	170/175/180/185/185
LONG TUNIC	100/105/105/110/110	190/195/200/205/210
KNEE LENGTH	115/120/120/125/125	220/225/230/235/240 cm

## SLEEVE

SIZE	SHORT	LONG
32-44	110/115/120/120/125	130/135/140/145/150 cm
46-56	130/135/135/140/140	150/155/160/160/165 cm
58-60	140/140/145/150/150	160/160/165/170/170 cm

## ZIPPER

	LENGTH
WAIST LENGTH	65/65/70/70/70 cm
TUNIC	80/85/85/85/90 cm

# pages

Seam allowance is not included. Add seam/hem allowance.

**ZIPPER:** The hem needs to be adjusted in height to the length of the zipper you have selected. Alt cut the zipper on top and start the way from the top down and let it finish earlier.

Choose your body length on the pattern.

Choose to hem/bind the neck line or attach hood/collar.

DRESS	p 4
WRAPED HOOD	p 11
SLEEVE CUFFS	p 14
ZIPPER	p 16

# dress

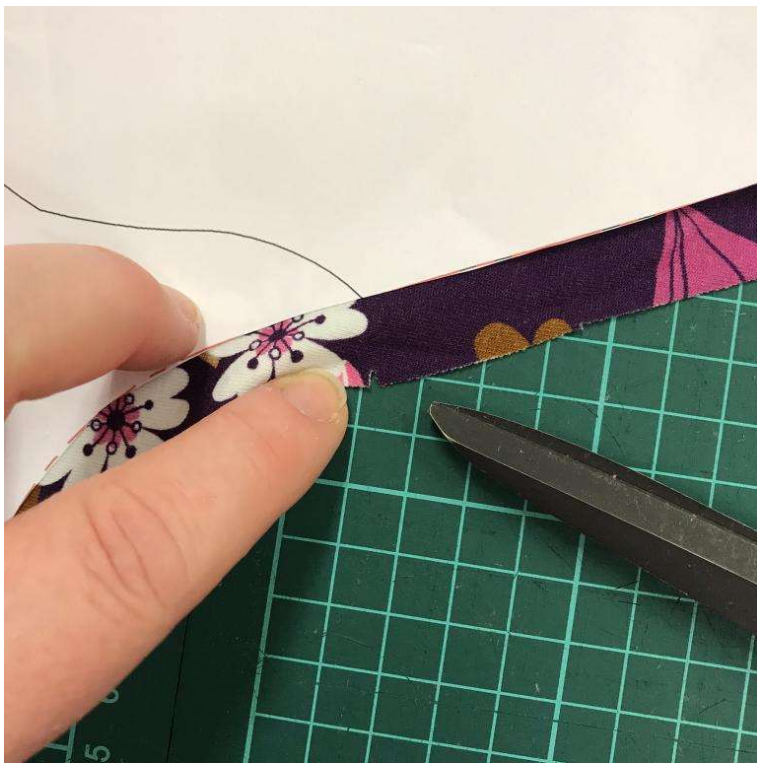
Seam allowance is not included. Add seam/hem allowance.

Choose your body length on the pattern.



*The sleeve is cut as one piece on the picture.*

Cut out all the parts.



Mark where the pocket should sit on the front piece. Repeat with sleeve front.





Sew the pocket to the front piece.



Sew the pocketbag to the sleeves.





Sew together the raglan seams and around the outer edge of the pocket.





Sew side seams together. Hem the bottom. Hem or cuff the sleeves.



*Waist band to the top.*

Fold the cuff according to the thread direction and sew the edge together to make a large round cuff.



Fold the cuff in half and sew to the bottom edge of the top.

leeve with cuff: Fold the cuff according to the thread direction and sew the edge together. Fold the cuff in half and sew the bottom of the long sleeve.

Done!

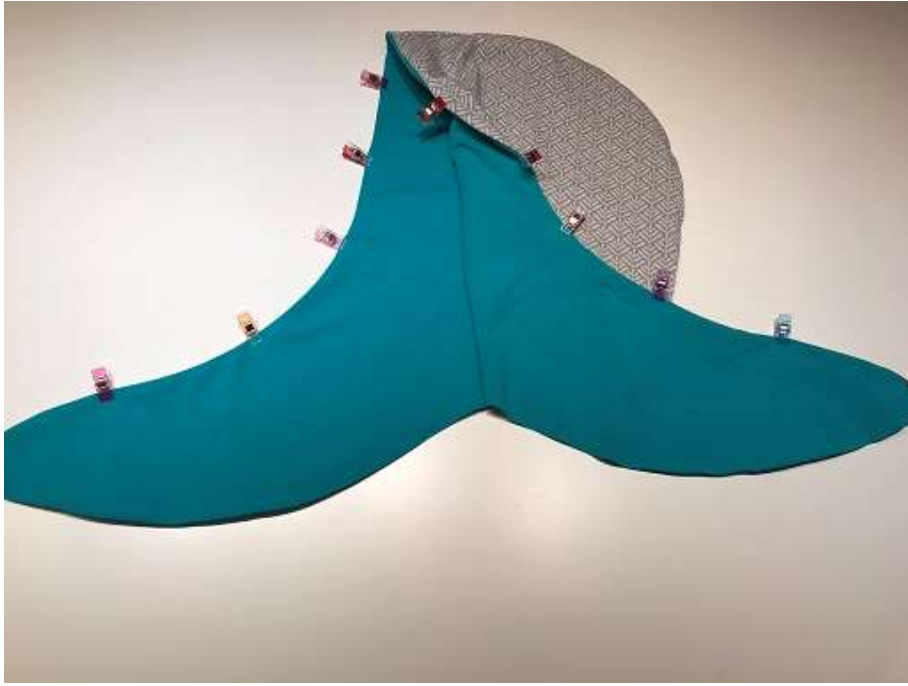
# wrapped hood



Add pieces right sides together and sew the outer main turn on both sides.

Lined hood / hood with lining: Sew on a leather patch / reinforcement in the lower corner of the hood and if necessary eyelets are attached.





Add pieces right sides together and sew the outer main turn on both sides. Add hoods right sides together and sew the edge. The eyelets for the drawstring are mounted with a vlieseline / insert before the collar is sewn. Turn the hood right.



Pin the right sides together, starting from the middle of the neck. Sew around the entire neck.



Done.

# sleeve cuffs



Fold the sleeves in the thread direction and sew together. Fold it double.



Insert the cuff of the sleeve, right sides together. Ensure that the seam of the cuff meets the sleeve seam. Sew together.





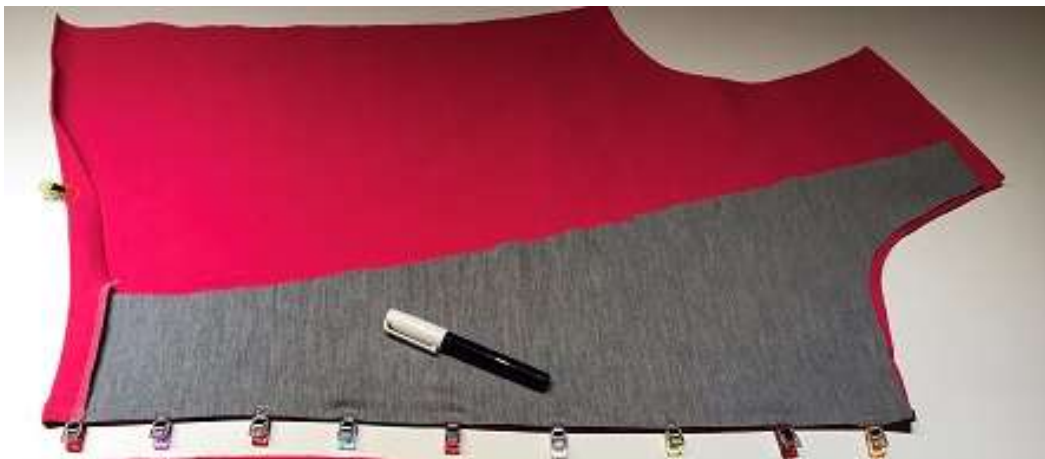
Done!

# zipper

This example comes from another garment and some details may therefore deviate from this pattern.



The length on the coat is adjustable with the length of the zipper, from the middle front and ends a bit higher than the hem of the coat. A facing could be added with the zippers wrong side before being stitched to the front piece.



*Example of lining. Draw eg 5cm along the edge and cut out. The lining is placed on the front right sides together with the zipper between.*



Put the zipper on the right sides on the front piece and up towards the hoodie or collar.





The zipper should begin at the exact center of the collar.



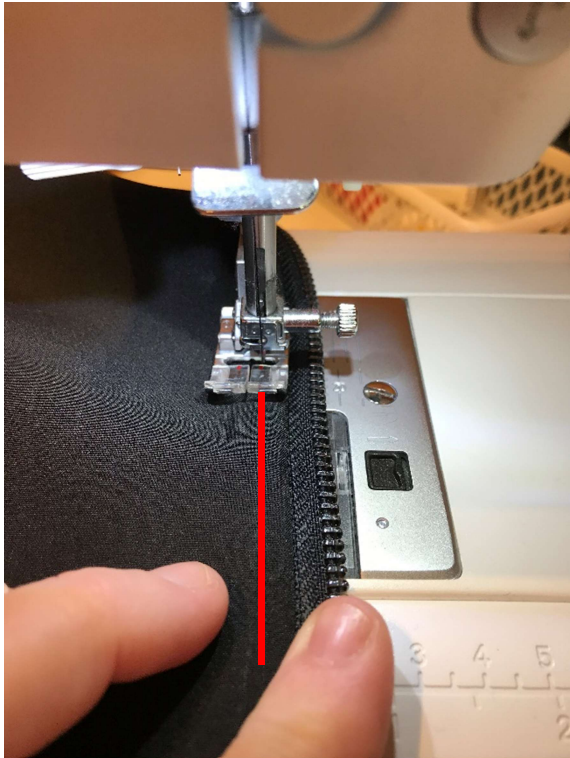
Fold the margin of the zipper out and then fold over the inside of the collar.

If the zipper reaches the hem, fold up the hem to the front and attach the zipper between the fabrics. Stitch with a zipper custom presser foot or with a regular presser foot, close to the zipper teeth. Fold the hem to the back and hem.



Reverse the collar.





Do a straight stitch on the right side, close to the zipper. Start on the bottom on one side and go up, around the collar and go back on the other side.



Done