

tutorial fantastical weran

eu size 32 – 60



This pattern has different possibilities for variation. Short sleeve, long w / u cuff or 3/4 sleeve. Hood for two necklines, wrap-around hood, collar / wrap-around collar, two-color collar, side pockets and two variants of pockets. The pattern is suitable for stretchy fabrics such as knitwear, jogging. The model is freely spacious.

Seam allowance is not included. Add seam allowance for hem.



sewingheartdesign.com

information

SALES LICENSE

Included with the patterns is a sales license. That means that you as individual who sews as a hobby or owns a business have the right to use the patterns to sell clothes. The license applies only for the buyer of the pattern and the license terms cannot be transferred to a third party. Which means that you cannot let another physical or legal person produce clothes on a large scale on your behalf.

SEAM ALLOWANCE/HEM NOT INCLUDED

You should add seam allowance on ALL patterns except where you intend to add binding or if the patterns says otherwise. I recommend that you read through the sewing instructions. Within it are instructions both in picture and text which will facilitate your sewing.

PAPER PATTERN

The paper patterns are sensitive to moisture and tear. Handle with care. On certain paper patterns the parts are split due to lack of space. Read the instructions carefully to know if they are to be stenciled and put together in a certain way. When you sell your pattern, you must destroy all copies that you have made.

PDF-PATTERN

Files are downloaded directly from your page on Etsy – after purchase they will be added to “purchases”. They are PDF-files and I recommend a pdf-reader with a setting to switch to “real size” and “automatic portrait/landscape” when printing. For example, Adobe Reader or PDF X-change. It is important to measure the control box so that it is exactly 30mm * 30mm or your garment might not end up the way you imagine. PDF is easy to print. Utilize the layers to only print the page you want to sew and cut it directly. There are arrows on the pattern and they should align towards each other when you put the pattern together. There is also an overview of the pattern where you can see how the different pages should be positioned.

Because a PDF-pattern is a digital product there are no refunds or returns.

The PDF-Pattern may not be copied and/or sold/donated to a third party.

LICENSE

When you purchase a pattern, you agree to an agreement with Sewingheartdesign that you accept the license with its terms and conditions. Violation of this agreement will be brought before the Swedish court.

I hope you will be satisfied with the pattern! Good luck with the sewing!

/Marie Sidén

Sewingheartdesign

fabric requirements

Fabric usage is calculated on washed/shrunk fabric 160cm wide, including seam allowance (1cm) and hem (3cm).

ALL MEASUREMENTS ARE COUNTED ON HEIGHT 190CM.

FINISHED GARMENTS

Size	SHORT TOP	TOP	TUNIC	KNEE-LENGTH
	short sleeve	3/4 sleeve	long sleeves	long-sleeved
32-50	85 cm	125 cm	155 cm	170 cm
52-60	130 cm	150 cm	170 cm	200 cm

LOOSE PARTS

SIZE	SHORT TOP	TOP	TUNIC	KNEE	ROUNDED
32-50	65 cm	75 cm	85 cm	100 cm	110 cm
52-60	130 cm	150 cm	170 cm	200 cm	220 cm
SLEEVE	SHORT	3/4	LONG w cuffs	LONG w/o cuffs	
32-50	100x20 cm	100x50 cm	100x60 cm	100x70 cm	
52-60	110x25 cm	110x55 cm	110x65 cm	110x70 cm	

SKIRT	SHORT	KNEE-LENGTH
32-50	105x45 cm	105x55 cm
52-60	130x45 cm	130x55 cm

CUFFS	SLEEVE	WAIST, loose	WAIST, tunic
32-50	50x30 cm	105x22 cm	105x32 cm
52-60	55x30 cm	140x22 cm	130x32 cm

HOOD	SMALL	WRAPED	(x2 for lined hood)
32-50	80x50 cm	110x50 cm	
52-60	80x50 cm	120x50 cm	

COLLAR	STRAIGHT, one fabric		STRAIGHT, two fabrics	WRAPED (plus straight one fabric)
32-50	70/80/90x20 cm		70/80/90x25 cm	90/100/105x25 cm
52-60	80/90/100x20 cm		80/90/100x25 cm	100/105/115x25 cm

POCKET	SIZE 32-50	SIZE 52-60
	40x30 cm	45x30 cm

ZIPPER, openable

The height of the garment is adjusted to the length of the zipper

32-60	SHORT TOP	TOPP	TUNIC	KNEELENGTH	150/170/190 CM
Stor urringning	35/40/40	40/45/50	55/60/60	70/75/80	
Urringning	40/40/45	45/50/55	60/65/70	75/80/85	
Båttform	45/45/50	50/55/55	65/70/70	80/85/90	

+10CM FOR HOOD

tutorial

Seam allowance is not included. Add seam/hem allowance.

ZIPPER: The hem needs to be adjusted in height to the length of the zipper you have selected. Alt cut the zipper on top and start the way from the top down and let it finish earlier.

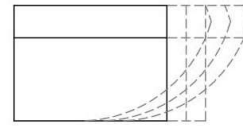
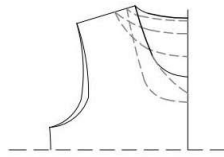
Choose your body length on the pattern.

Choose to hem/bind the neck line or attach hood/collar.

SHIRT WITH SKIRT	p 8
WRAPED HOOD	p 13
WAIST BAND	p 15
KANGAROO POCKET, STRAIGHT OPENING	p 17
SLEEVE CUFFS	p 21
COLLAR	p 22
ZIPPER	p 24

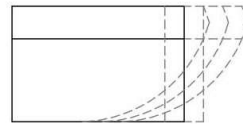
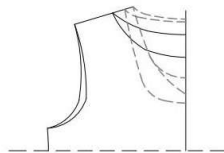
COLLAR

LINE FOR REGULAR NECKLINE



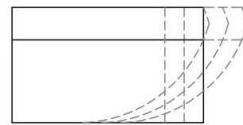
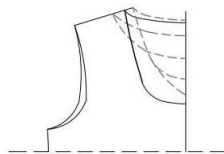
COLLAR

LINE FOR HOOD/SHAWL HOOD/BIG NECKLINE



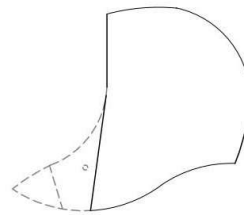
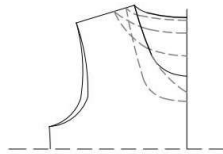
COLLAR

LINE FOR HOOD/SHAWL HOOD/BIG NECKLINE



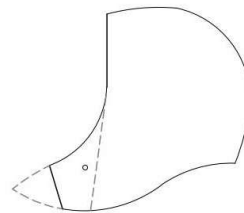
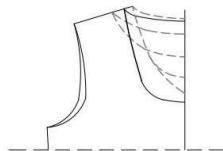
HOOD

LINE FOR REGULAR NECKLINE



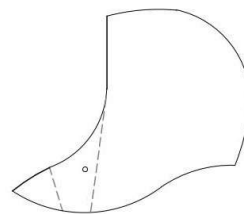
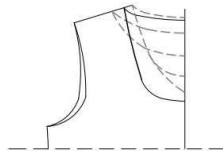
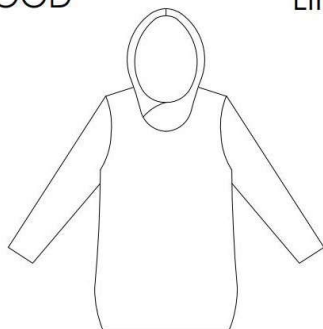
HOOD

LINE FOR HOOD/SHAWL HOOD/BIG NECKLINE



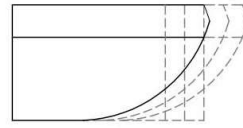
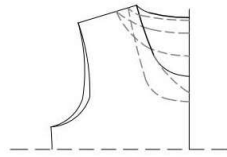
HOOD

LINE FOR HOOD/SHAWL HOOD/BIG NECKLINE



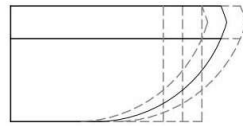
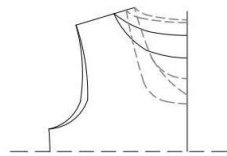
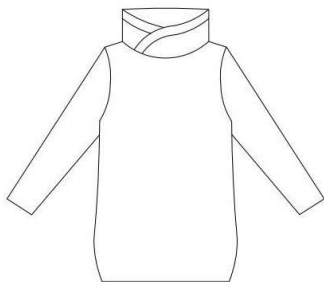
SHAWL COLLAR

LINE FOR REGULAR NECKLINE



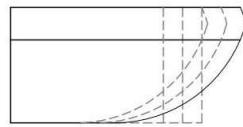
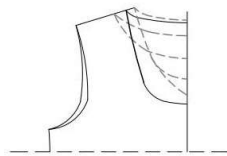
SHAWL COLLAR

LINE FOR HOOD/SHAWL HOOD/BIG NECKLINE



SHAWL COLLAR

LINE FOR HOOD/SHAWL HOOD/BIG NECKLINE



shirt with skirt



Cut out all the parts.



Hem the neck: Sew both shoulders.

Edge of the neck: Sew a shoulder, edge the neck, sew the other shoulder.



Edge eventuell pockets. If you are going to sew the cangaroo pocket instead, it is easy to sew it now. Check the section for cangaroo pocket p. 16



Glue / pin pocket to front piece with the right side out. Stitch with decorative stitch.



Sew on the sleeve.



Sew the side seams together.



Hem the sleeves.

Edging: Finish all seam bindings by sewing a straight seam across it. Cut one of the edges near the fabric and fold the uncut edge over the short one. Sew a straight seam to bond the edge to the fabric. Cut off excess seam binding.



Fold cuffs along the grain of fabric (short sides together, right sides in) and sew the edges together.



Hem the lower edge.



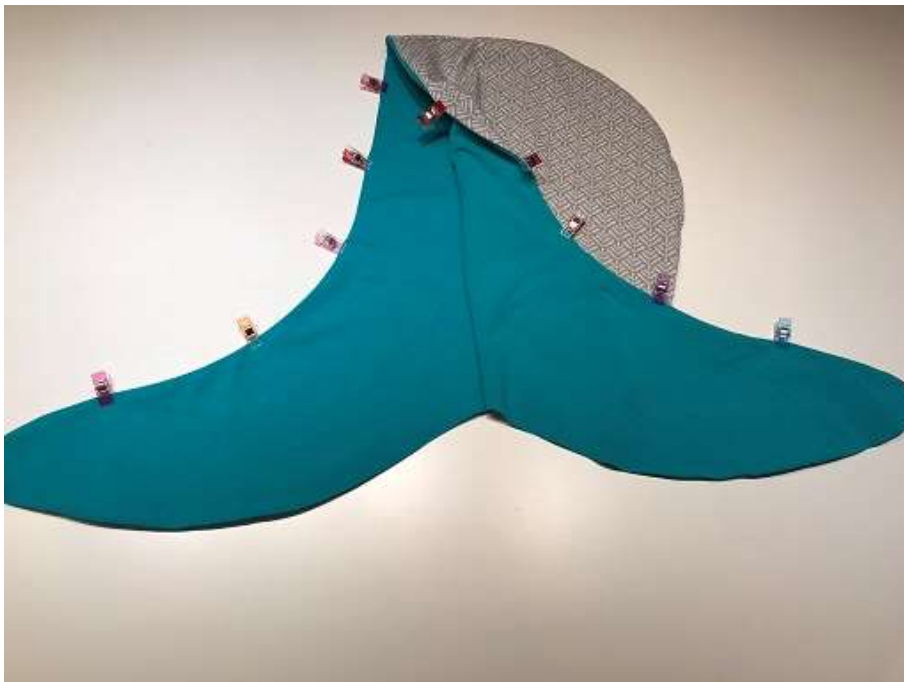
Add the skirt and top, right sides together. Pin in four places (at least) and sew. Hem the neck.

Done!

wrapped hood



Add pieces right sides together and sew the outer main turn on both sides.
Lined hood / hood with lining: Sew on a leather patch / reinforcement in the lower corner of the hood and if necessary eyelets are attached.



Add pieces right sides together and sew the outer main turn on both sides. Add hoods right sides together and sew the edge. The eyelets for the drawstring are mounted with a vlieseline / insert before the collar is sewn. Turn the hood right.

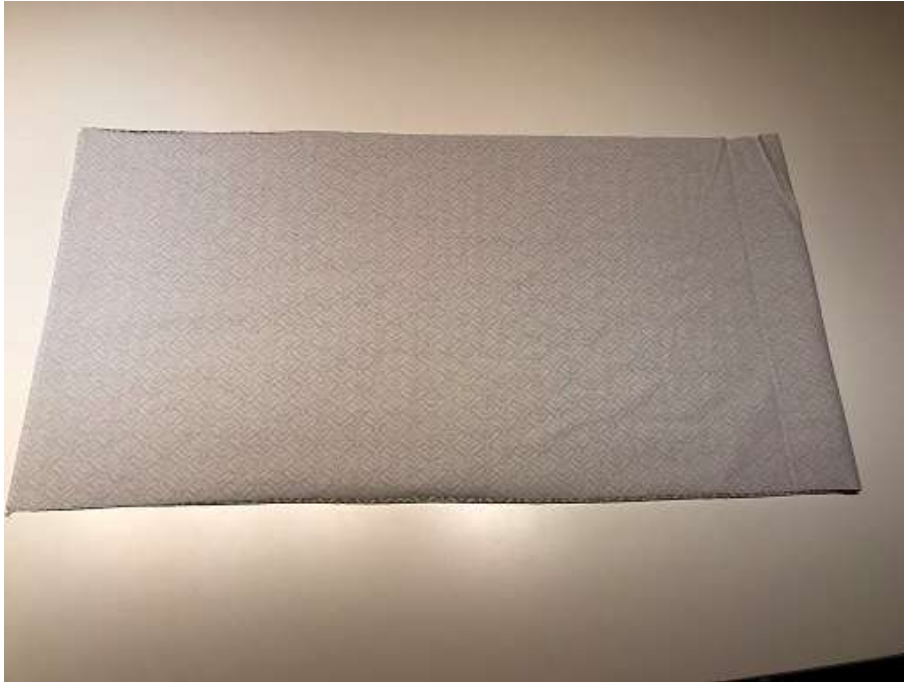


Pin the right sides together, starting from the middle of the neck. Sew around the entire neck.



Done.

waist band



Fold cuffs along the grain of fabric (short sides together, right sides in) and sew the edges together.



Fold it double (right sides out) and place it inside the sleeve opening (right sides together) and sew together.



Done!

kangaroo pocket, straight pocket opening



Cut out all the parts. Hem the short sides of the kangaroo pocket. Mark the opening. Seam allowance is included on the pocket opening strip. Fold in 1cm on one long side and 2cm on short sides.



Glue the strip 2cm onto the fabric.



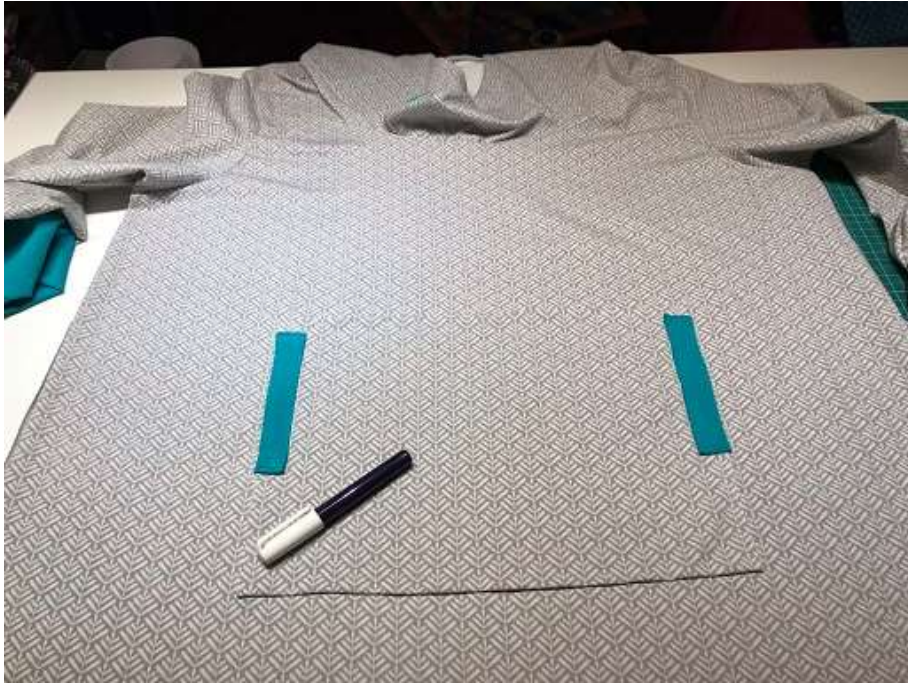
Fold the strip behind the kangaroo pocket and pin.



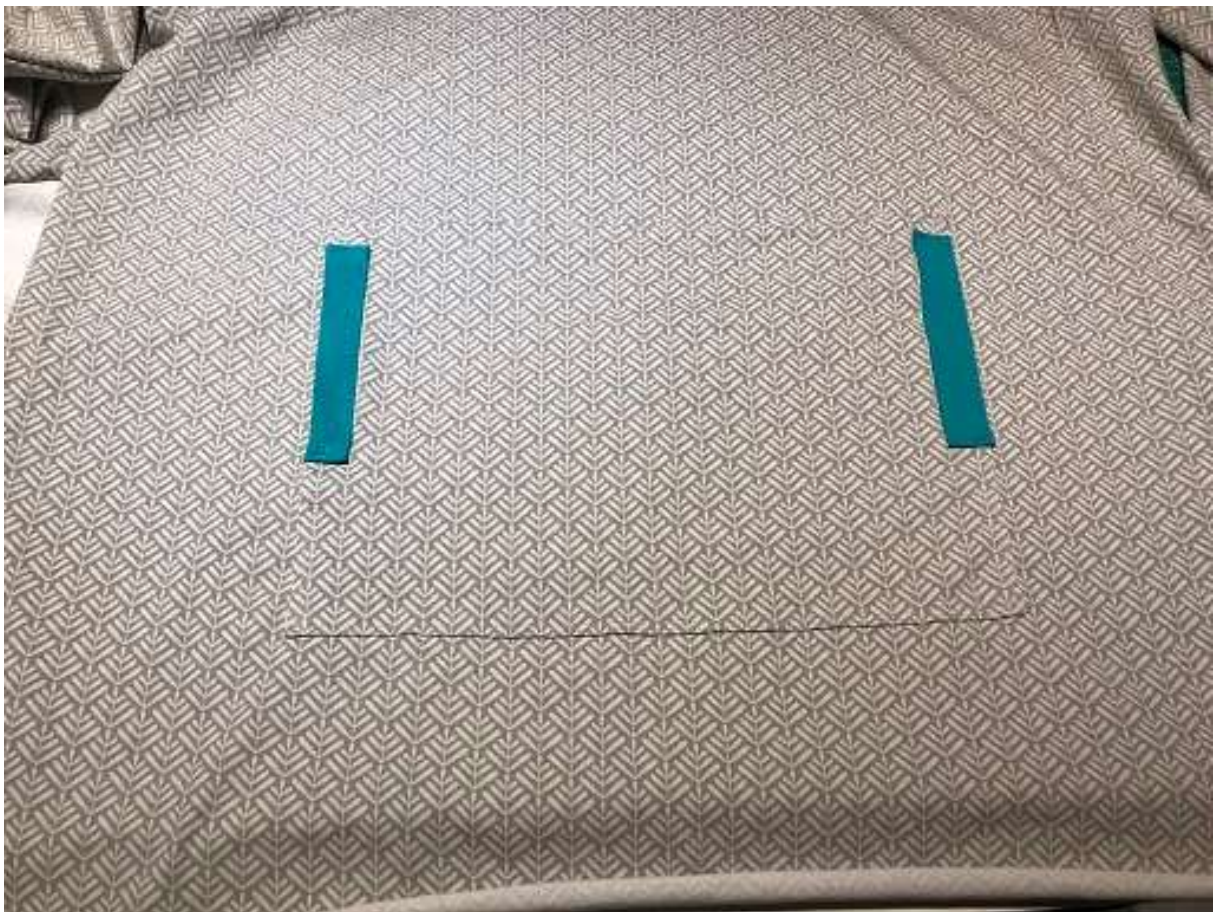
Sew a straight stitch around the strip. Cut off the abundance.



Do the same on the other side.



Fold in the top / bottom edge 1 cm and glue / fasten it to the front piece. The top edge should be the same line as the kangaroo pocket on the pattern.



Sew around the edges except at the pocket openings.

Done!

sleeve cuffs



Fold the sleeves in the thread direction and sew together. Fold it double.

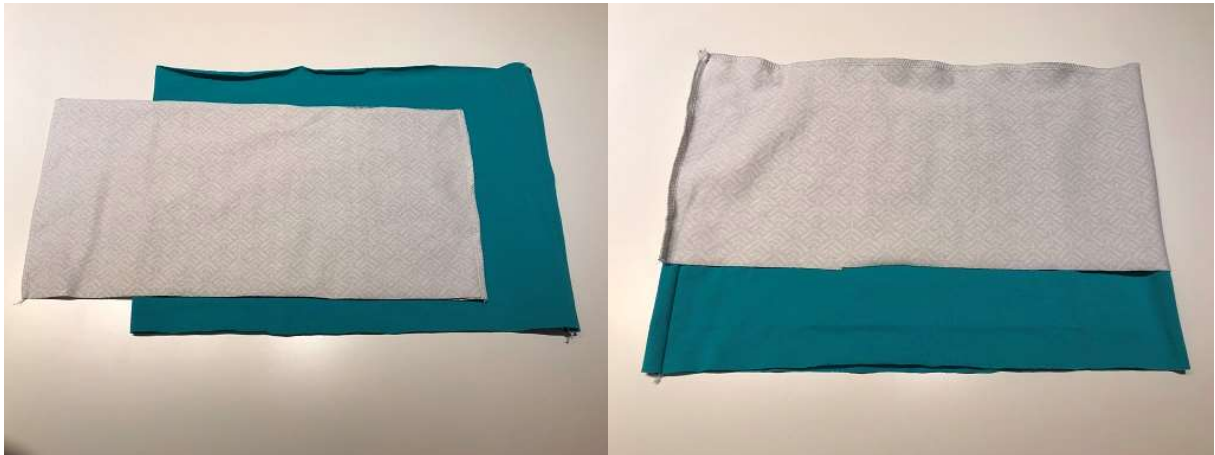


Insert the cuff of the sleeve, right sides together. Ensure that the seam of the cuff meets the sleeve seam. Sew together.



Done!

collar



COLLAR TWO FABRICS

Fold the collar along the thread direction. Sew the short side together. Repeat with the second color. Add two pieces right sides together. Sew the top, keep track of whether the fabric has patterns that should be upwards.

COLLAR ONE FABRIC

Fold the collar along the thread direction. Sew the short side together. Turn the collar right. Pin it to the neck opening with at least 4 needles. Sew around the entire neck.



Turn the collar right. Pin it to the neck opening with at least 4 needles. The collar should have two-fabrics towards the right side of the top. Sew around the entire neck.

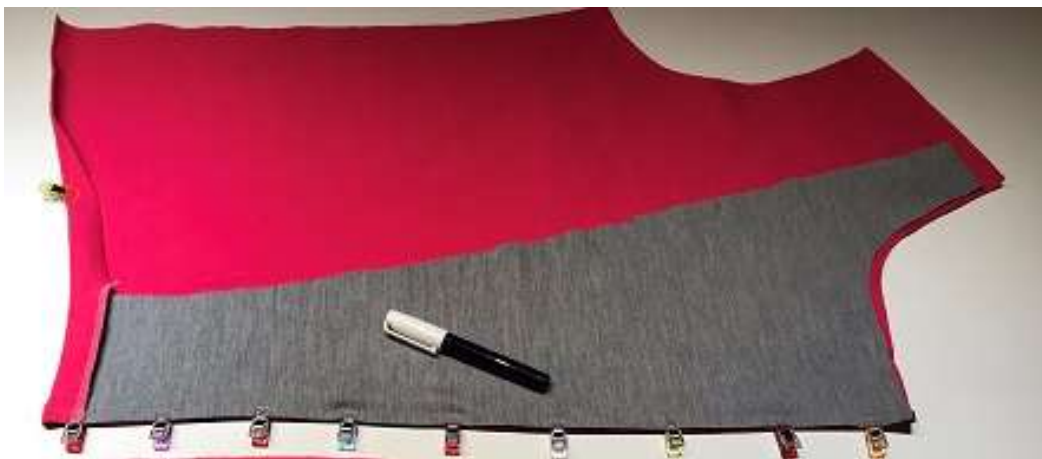
Done!

zipper

This example comes from another garment and some details may therefore deviate from this pattern.



The length on the coat is adjustable with the length of the zipper, from the middle front and ends a bit higher than the hem of the coat. A facing could be added with the zippers wrong side before being stitched to the front piece.



Example of lining. Draw eg 5cm along the edge and cut out. The lining is placed on the front right sides together with the zipper between.



Put the zipper on the right sides on the front piece and up towards the hoodie or collar.



The zipper should begin at the exact center of the collar.

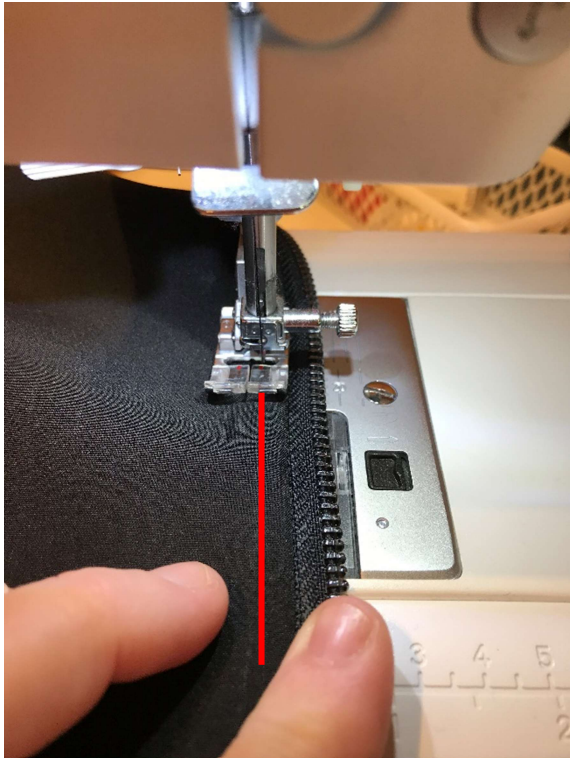


Fold the margin of the zipper out and then fold over the inside of the collar.

If the zipper reaches the hem, fold up the hem to the front and attach the zipper between the fabrics. Stitch with a zipper custom presser foot or with a regular presser foot, close to the zipper teeth. Fold the hem to the back and hem.



Reverse the collar.



Do a straight stitch on the right side, close to the zipper. Start on the bottom on one side and go up, around the collar and go back on the other side.



Done