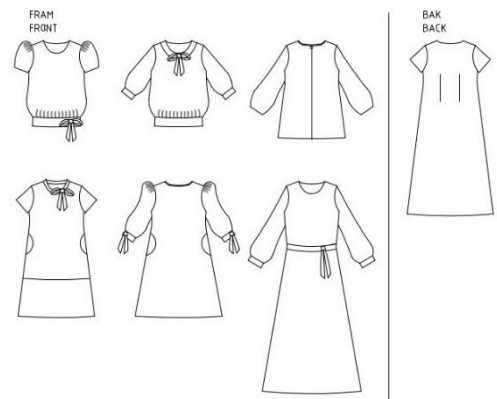
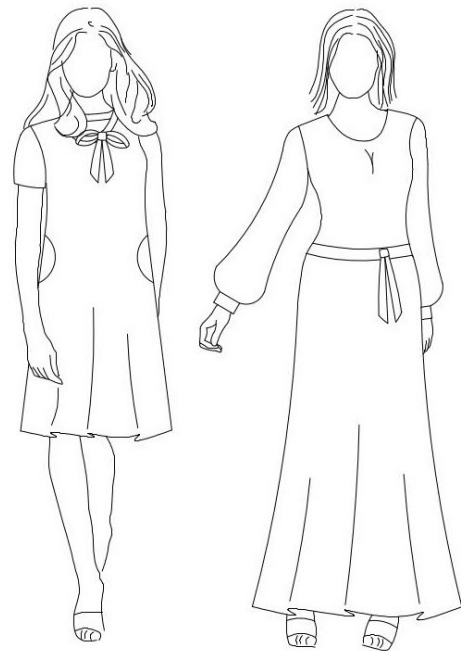


# tutorial

## the dress

eu size 32 - 60



This pattern has a number of different possibilities for variation. There are four lengths with or without pockets; top, tunic, knee length or maxi dress. The sleeve can be made short, 3/4, long with or without a cuff. Neckline is high or boat shape. Lumbar reduction on the back. You can choose a tie band for the neckline, sleeves or waist. It is also possible to make channel for elastic band in the sleeve.

The fit is normal or loose (two widths to choose from)

Seam or hem allowance is not included.



[sewingheartdesign.com](http://sewingheartdesign.com)

# information

## **SALES LICENSE**

Included with the patterns is a sales license. That means that you as individual who sews as a hobby or owns a business have the right to use the patterns to sell clothes. The license applies only for the buyer of the pattern and the license terms cannot be transferred to a third party. Which means that you cannot let another physical or legal person produce clothes on a large scale on your behalf.

## **SEAM ALLOWANCE/HEM NOT INCLUDED**

You should add seam allowance on ALL patterns except where you intend to add binding or if the patterns says otherwise. I recommend that you read through the sewing instructions. Within it are instructions both in picture and text which will facilitate your sewing.

## **PAPER PATTERN**

The paper patterns are sensitive to moisture and tear. Handle with care. On certain paper patterns the parts are split due to lack of space. Read the instructions carefully to know if they are to be stenciled and put together in a certain way. When you sell your pattern, you must destroy all copies that you have made.

## **PDF-PATTERN**

Files are downloaded directly from your page on Etsy – after purchase they will be added to “purchases”. They are PDF-files and I recommend a pdf-reader with a setting to switch to “real size” and “automatic portrait/landscape” when printing. For example, Adobe Reader or PDF X-change. It is important to measure the control box so that it is exactly 30mm \* 30mm or your garment might not end up the way you imagine. PDF is easy to print. Utilize the layers to only print the page you want to sew and cut it directly. There are arrows on the pattern and they should align towards each other when you put the pattern together. There is also an overview of the pattern where you can see how the different pages should be positioned.

Because a PDF-pattern is a digital product there are no refunds or returns.

The PDF-Pattern may not be copied and/or sold/donated to a third party.

## **LICENSE**

When you purchase a pattern, you agree to an agreement with Sewingheartdesign that you accept the license with its terms and conditions. Violation of this agreement will be brought before the Swedish court.

I hope you will be satisfied with the pattern! Good luck with the sewing!

/Marie Sidén

Sewingheartdesign

# fabric requirements

Fabric usage is calculated on washed/shrunk fabric 160cm wide, including seam allowance (1cm) and hem (3cm).

BODY LENGTH 150/160/170/180/190 cm

	32-44	46-60
<b>TOP</b> , short sleeve	90/90/90/95/95 cm	140/145/150/150/150 cm
<b>TUNIC</b> , long sleeve	150/155/160/160/165 cm	170/170/175/180/180 cm
<b>KNEE LENGTH</b> , long sleeve	170/170/180/180/185 cm	200/210/215/220/220 cm
<b>FOOT LENGTH</b> , wide, long sleeve	280/290/300/310/320 cm	280/290/300/310/320 cm

## LOOSE PARTS

ADD THE PARTS YOU WILL USE

SIZE	32-44	46-60
TUNIC	80/85/85/85/90 cm	170/170/175/180/180 cm (*)
KNEE LENGT	100/100/105/105/110 cm	200/210/215/220/220 cm (*)
FOOT LENGTH, narrow	140/145/150/155/160 cm	280/290/300/310/320 cm (*)
FOOT LENGTH, wide	280/290/300/310/320 cm	280/290/300/310/320 cm (*)

(\*) incl sleeve

<b>SLEEVE</b>	32-44	46-60
SHORT	20 cm	25 cm
3/4 OR LONG W CUFFS	50/55/55/60/60 cm	60/60/65/65/65 cm
LONG SLEEVE	70/70/75/75/75 cm	75/80/80/80/85 cm

## POCKETS IN OTHER FABRICS

32-60      30 cm

## KNIT BINDING

**HEIGHT: 20 cm**

SIZE	32	34	36	38	40	42	44	46	48	50	52	54	56	58	60
WIDTH	80	85	90	95	100	105	110	110	115	120	125	130	135	140	140 cm

# pages

SEAM/HEM ALLOWANCE NOT INCLUDED.

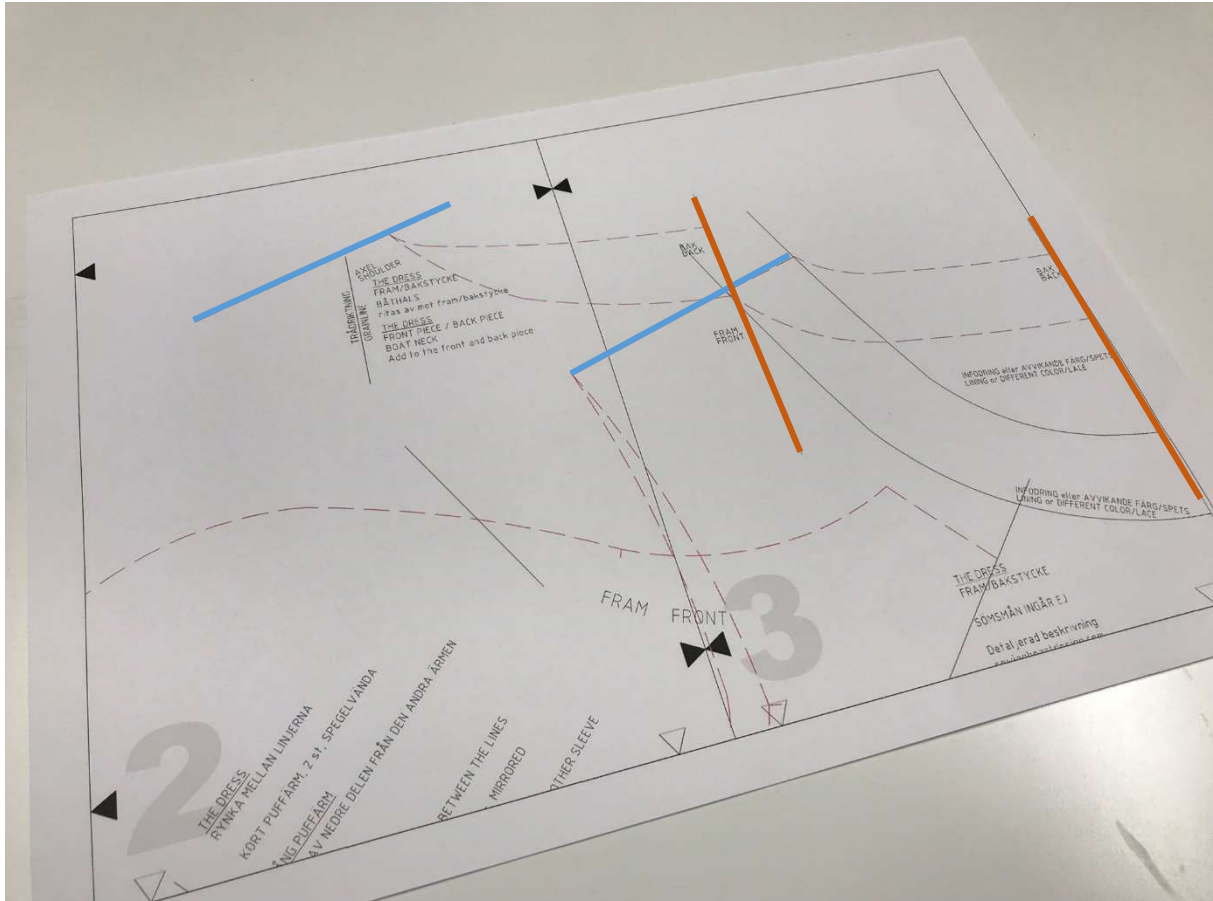
Choose your body length on the pattern.

TUTORIAL	p 5
PUFF SLEEVE	p 7
SEWING THE GARMENT	p 8
LUMBAR REDUCTION	p 11
NECK COLLAR	p 15
WAIST BAND WITH TIE STRAPS	p 19
SLEEVE CUFFS	p 26
ZIPPER	p 27
POCKET BAG	p 33
POCKETS	p 35
KNIT BINDING	p 36

# tutorial

SEAM ALLOWANCE/HEM NOT INCLUDED.

Choose your body length on the pattern.



## BOAT NECK LINE

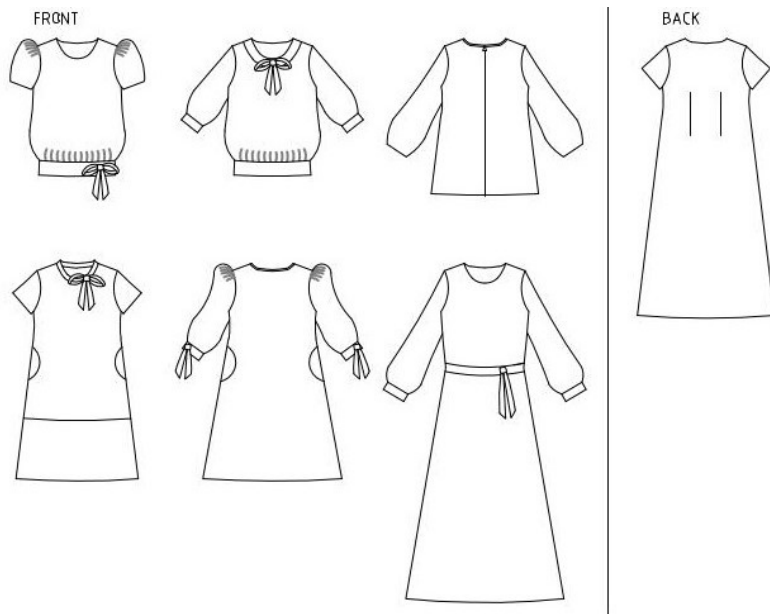
Draw off the front piece / back piece except the neckline.

Align the shoulder line and the centerline with the front piece counterparts (blue line on blue line, red on red).

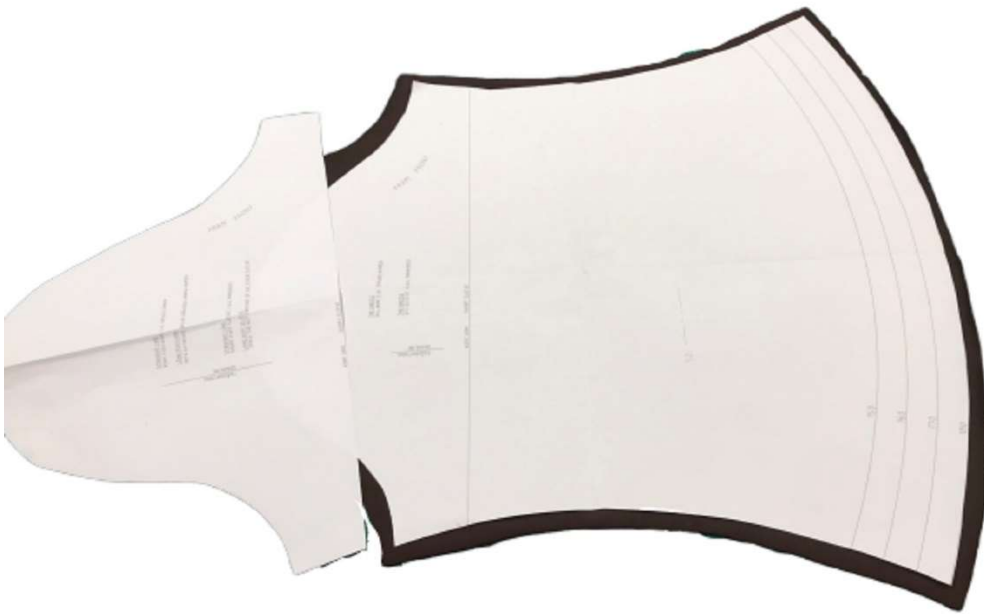
Draw the boat neck lines.



Cut out the parts that you will use.



puff sleeve



Place the pattern section for the puff sleeve on the sleeve width you want.



Make sure the short sleeve lines meet. Gather or add pleats between the marks before you attach the sleeves.

# sew the garment





Stitch the shoulders.



Hem the neckline.





Knit binding: Stitch one shoulder. Knit bind the neckline. Stitch the other shoulder.



Cut a small nick on the sleeve top and front mark.  
Match up the marks on the front piece and middle of the shoulder.



Stitch the sleeve.

# lumbar reduction



Draw the mark for lumbar reduction on the back cover.





Fold the fabric in the middle of the mark and sew along the line.



*Perfect fit!*

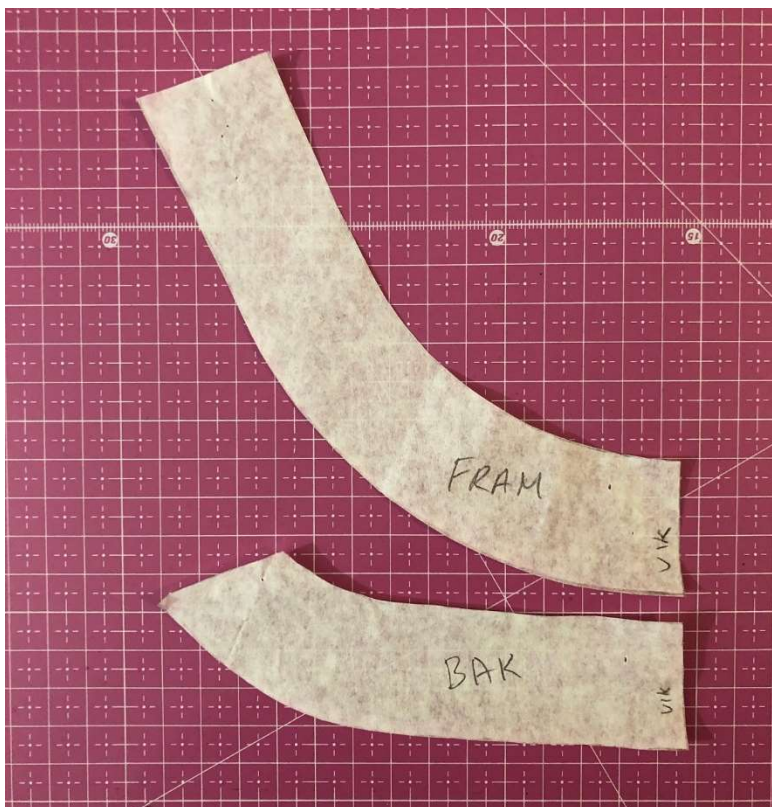


Put the garment facing right and sew the side seams together.

Hem, sew on sleeve cuffs or band edge sleeves.

Hem the bottom.

# neck collar



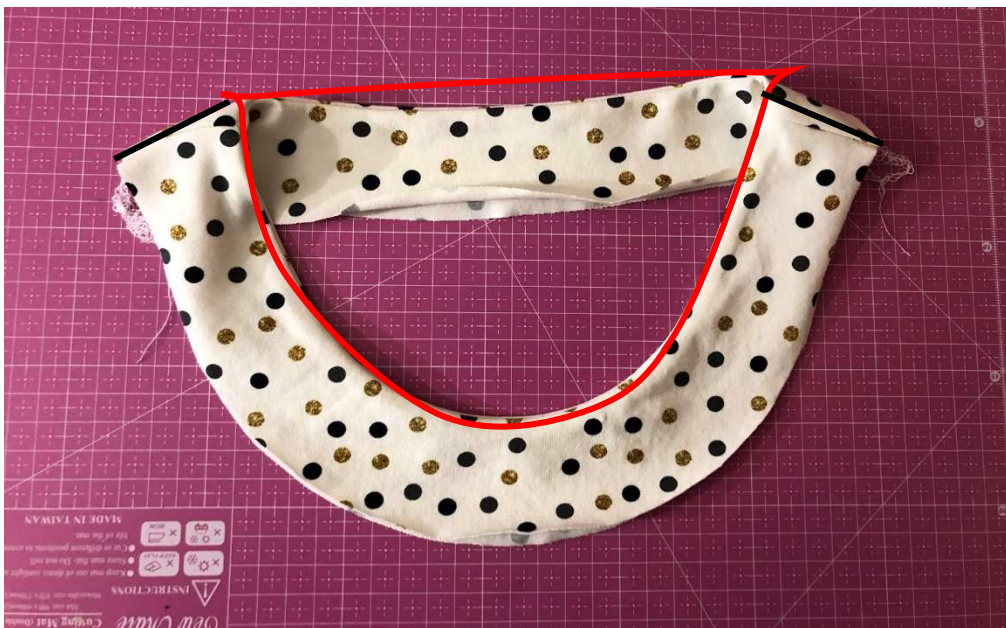
Cut two parts towards the folded edge of both the front and back of the collar.





Sew both parts of the front piece together.  
Repeat with both parts of the back piece.

The parts should be sewn together at the edge to the neck. (red mark in the image below)



Sew the pieces together in the side seams. (black lines in the picture)

Press the collar.



Sew shoulder seams.



Place the collar against the neckline of the shirt, straighten, and sew all three layers. Match the shoulder seams on the collar and sweater.



Finished!

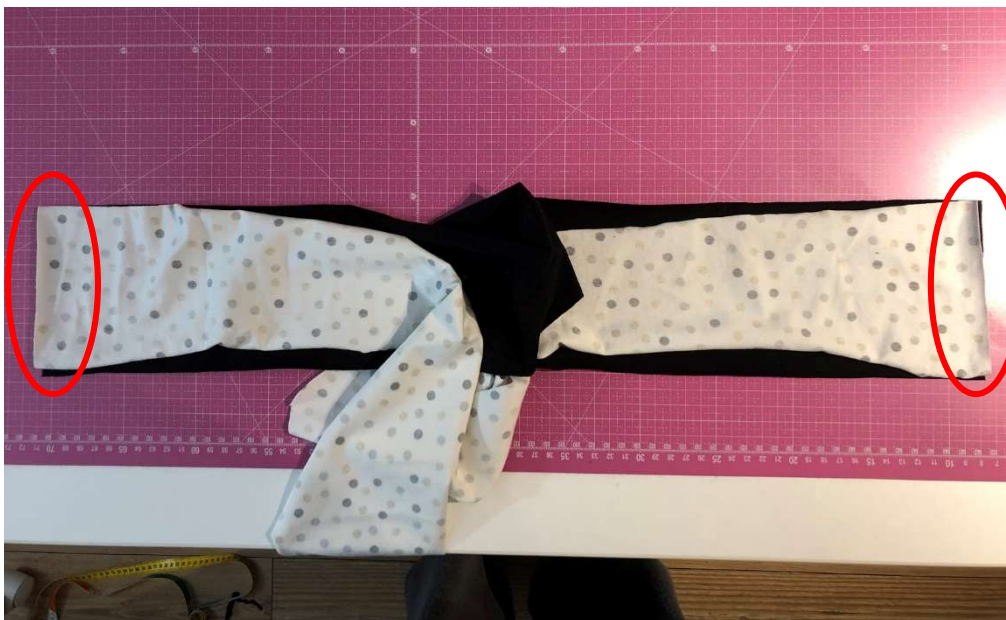


# waist band with tie straps

It is the same procedure for sleeve cuffs with tie straps.



Cut waist band on folded edge and two mirrored parts for the tie straps.



Put the short sides of the waist band and tie straps (straight side), right sides together.



Sew together the short sides.



Fold the tie straps lengthwise and sew together. Sew about 2 cm into the waistband.

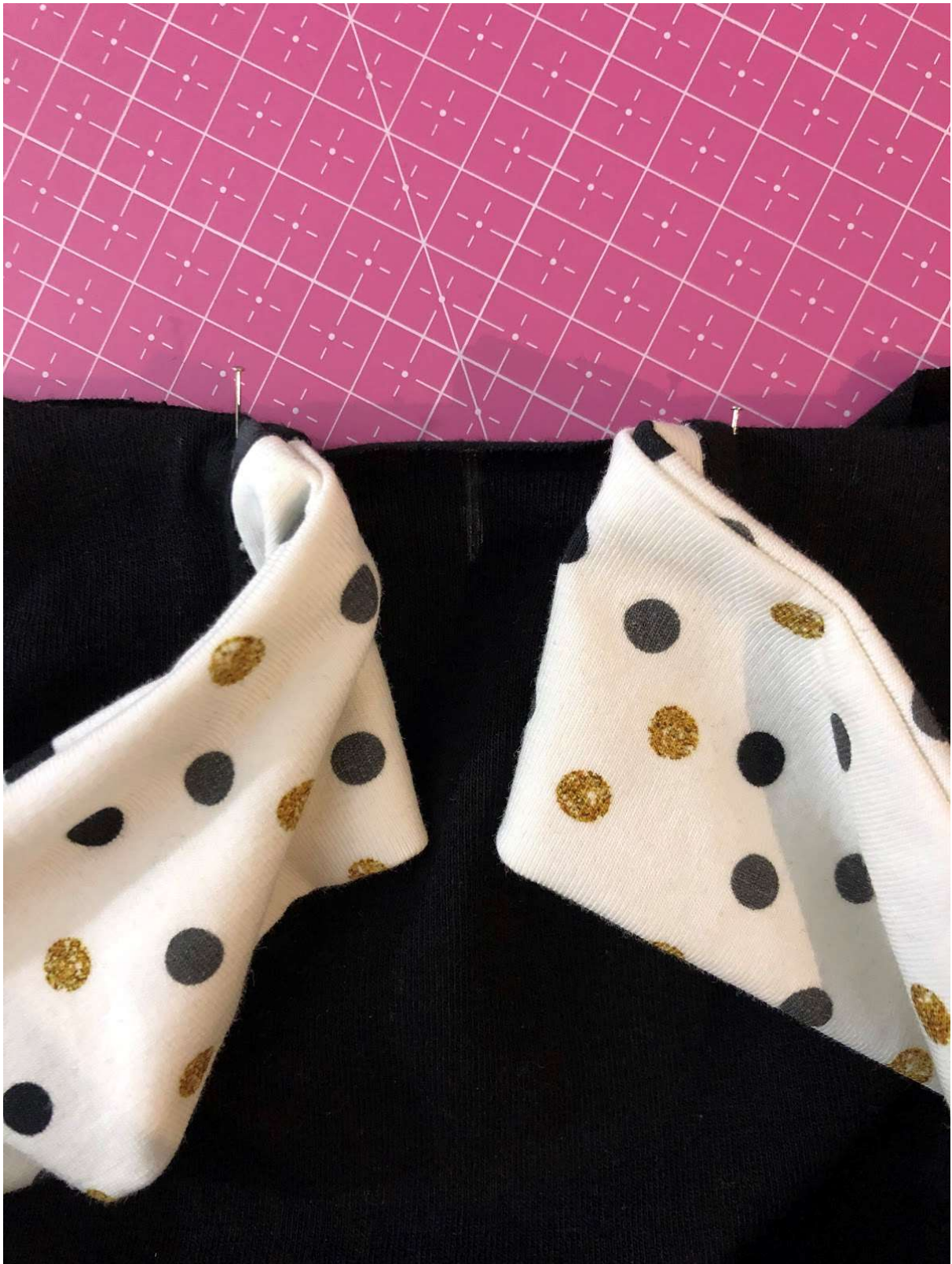


The result.





Turn strap right, presses and poke out corners.



Make a mark on the shirt where you want the bow.

Pin the cuff with the strip about 2 cm from the mark on each side. If you want the band to appear more, then extend it further out on the band.

The picture shows the cuff pinned to the sweater and the straps loosely hanging.





Pin remains the rest of the cuff around sweater end.



Sew the seam all around and stay as close to the mark as feels comfortable.



Fold in the raw edge of the sweater and hem. Sew well into the cuff to strengthen the seam.







The result.



Finished!



# long sleeve with cuffs



Fold the knit right sides together, according to the grainline and sew the edge.



Fold it double with the seam inwards. Place it inside the sleeve, right sides together, and sew.

Done!

# small sleeve cuff



Fold the knit right sides together, according to the grainline and sew the edge. Fold it double with the seam inwards.



Place it inside the sleeve, right sides together, and sew.

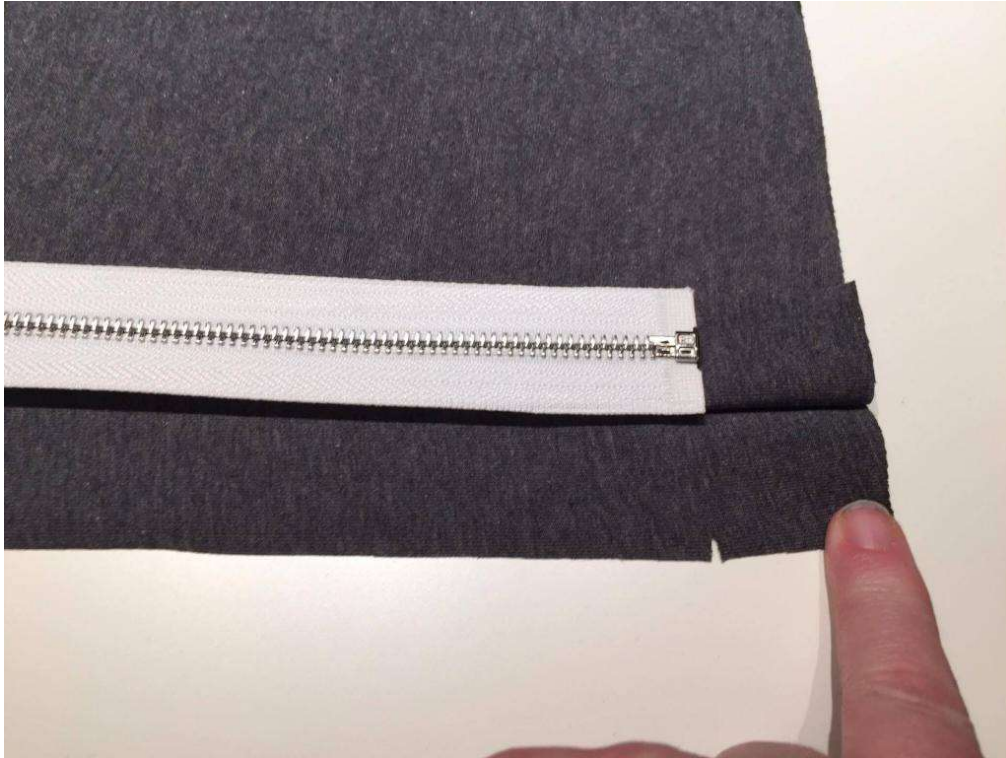
# zipper

Adjust the length of the garment to the zipper. Add hem to the garment.



*NOTE! Different neckline on the picture than on the pattern.*





Mark the zipper ends. Pin or attach the zipper with clips along the opening, starting from the bottom.



First fold the zipper down and then to the side.



Pin or insert a clip.





Sew the zipper from the top. Use zipper presser foot and appropriate needle.



Fold up the hem to the front and continue sewing the zipper.





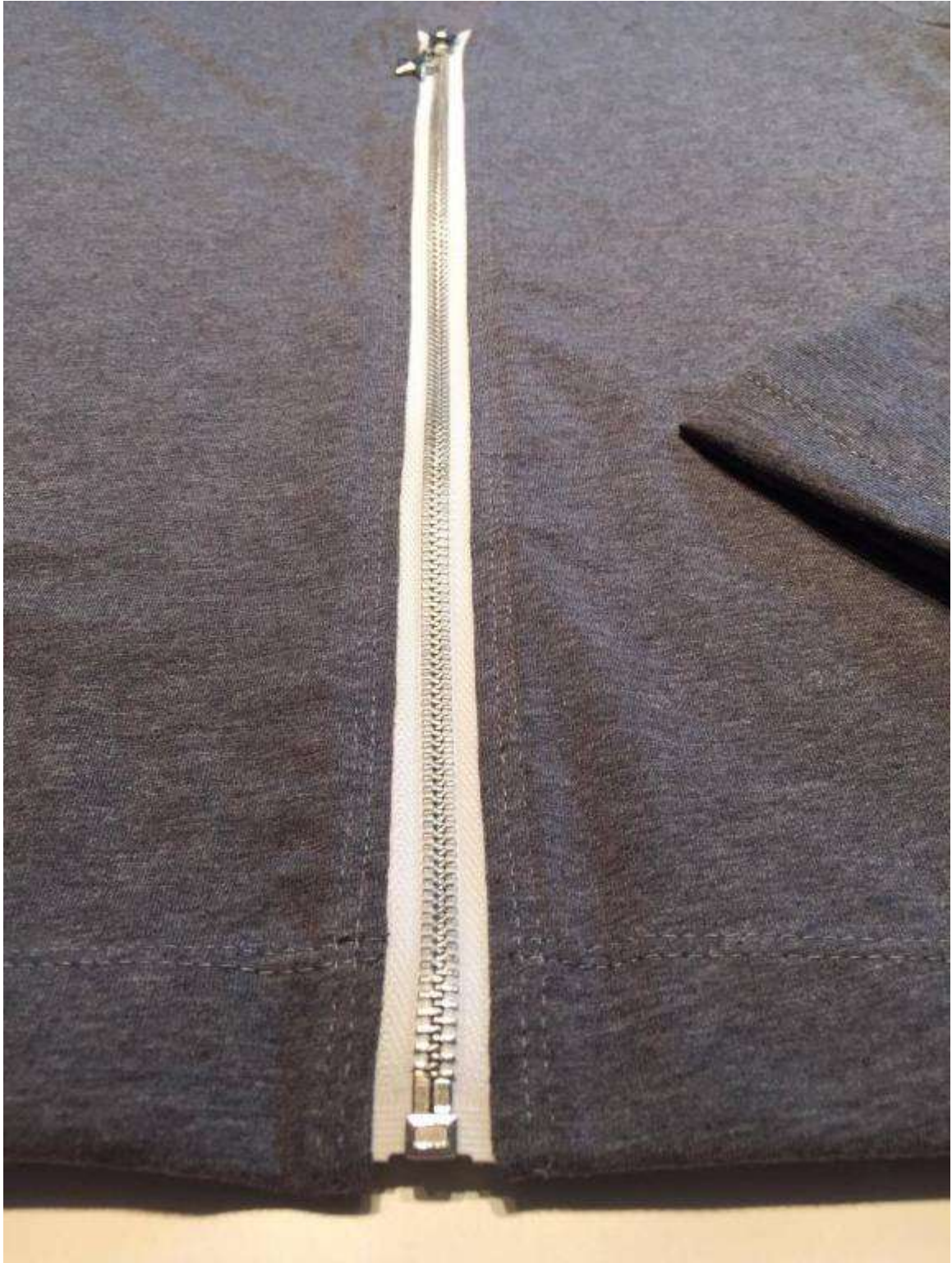
*Outside.*



*Inside.*



Now it looks like this.



Finish by hemming the bottom.

Topstitch along the zipper.



# fickpåse



Make a mark a few cm down from the waist on the side. Pin the pocket in place.



Stitch the pocket bag. Repeat with the other pocket bags (total 4).



Place the skirts right sides together. Stitch along the side seam and along the outer edge of the pocket.



Done!

# pockets



Knit bind the pocket opening.



Pin or glue the pocket right side against the wrong side front piece. Stitch a decorative stitch along the pocket lining.



# finishing knit binding



Finish by sewing a straight stitch over the edge band on the inside.



Cut off the excess on one part, fold over the other part and sew some stitches.



Cut off the abundance.