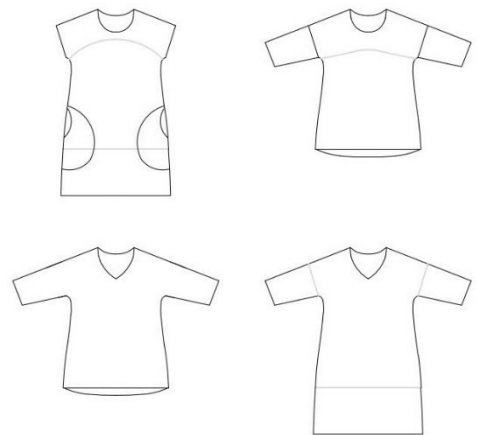


tutorial

swedish summer top

eu size 32 - 60



This pattern has a number of different possibilities for variation. The neck line is either plain round or v-neck. It is possible to divide the front piece and / or the back piece or you can have both in one piece. In this tutorial, both the front and back are divided.

Seam allowance is not included. Add seam allowance for hem.



sewingheartdesign.com

information

SALES LICENSE

Included with the patterns is a sales license. That means that you as individual who sews as a hobby or owns a business have the right to use the patterns to sell clothes. The license applies only for the buyer of the pattern and the license terms cannot be transferred to a third party. Which means that you cannot let another physical or legal person produce clothes on a large scale on your behalf.

SEAM ALLOWANCE/HEM NOT INCLUDED

You should add seam allowance on ALL patterns except where you intend to add binding or if the patterns says otherwise. I recommend that you read through the sewing instructions. Within it are instructions both in picture and text which will facilitate your sewing.

PAPER PATTERN

The paper patterns are sensitive to moisture and tear. Handle with care. On certain paper patterns the parts are split due to lack of space. Read the instructions carefully to know if they are to be stenciled and put together in a certain way. When you sell your pattern, you must destroy all copies that you have made.

PDF-PATTERN

Files are downloaded directly from your page on Etsy – after purchase they will be added to “purchases”. They are PDF-files and I recommend a pdf-reader with a setting to switch to “real size” and “automatic portrait/landscape” when printing. For example, Adobe Reader or PDF X-change. It is important to measure the control box so that it is exactly 30mm * 30mm or your garment might not end up the way you imagine. PDF is easy to print. Utilize the layers to only print the page you want to sew and cut it directly. There are arrows on the pattern and they should align towards each other when you put the pattern together. There is also an overview of the pattern where you can see how the different pages should be positioned.

Because a PDF-pattern is a digital product there are no refunds or returns.

The PDF-Pattern may not be copied and/or sold/donated to a third party.

LICENSE

When you purchase a pattern, you agree to an agreement with Sewingheartdesign that you accept the license with its terms and conditions. Violation of this agreement will be brought before the Swedish court.

I hope you will be satisfied with the pattern! Good luck with the sewing!

/Marie Sidén

Sewingheartdesign

fabric requirement

Fabric required is calculated with pre-washed fabric, 160 cm with, seam allowance included (1 cm) and hem (3 cm)

Size	32	36	40	44	48	52	56	60
Top, short sleeve	80	85	90	95	95	100	190	190 cm
Top, long sleeve, pockets	115	125	130	135	135	140	190	190 cm
Dress, short sleeve	125	125	125	225	225	225	225	230 cm
Dress, long sleeve, pockets	170	170	170	270	270	270	270	275 cm



Cut out all the parts. Choose whole or split front / rear panel. Choose neckline, rounded or boat-shaped. Do you want / do you need to reduce the back of the back so that you draw off the lower part of the back piece after the rounded line marked on the pattern.



Sew split front / back piece.



Edging of the neck (pictured): Place the pieces right sides together and sew one shoulder seam.

Collar neck: Sew both shoulders together. Hem the neck.



Binding of neck: Bind the neck.



Binding of neck: Sew second shoulder seam.



Binding of sleeves: Bind the sleeves

Hemming the sleeves: Wait until you sew the side seams.



Binding: Sew the side seams.

Hemming: Sew the side seams. Hem sleeves.



Hem the bottom and finish the edge bands.



Done!