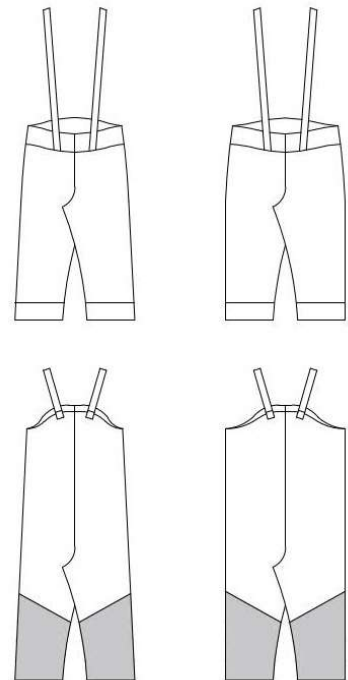


tutorial

playtime kids pants

eu size 50 - 158



This pattern has many different possibilities for variation. It is possible to make a single color or split with different colors. Leg cuffs or hemmed with elastic. The pattern is intended for non-stretchy fabrics such as rainwear, softshell, beaver nylon. Choose to split the pattern for effect.

Seam allowance is not included.



sewingheartdesign.com

information

SALES LICENSE

Included with the patterns is a sales license. That means that you as individual who sews as a hobby or owns a business have the right to use the patterns to sell clothes. The license applies only for the buyer of the pattern and the license terms cannot be transferred to a third party. Which means that you cannot let another physical or legal person produce clothes on a large scale on your behalf.

SEAM ALLOWANCE/HEM NOT INCLUDED

You should add seam allowance on ALL patterns except where you intend to add binding or if the patterns says otherwise. I recommend that you read through the sewing instructions. Within it are instructions both in picture and text which will facilitate your sewing.

PAPER PATTERN

The paper patterns are sensitive to moisture and tear. Handle with care. On certain paper patterns the parts are split due to lack of space. Read the instructions carefully to know if they are to be stenciled and put together in a certain way. When you sell your pattern, you must destroy all copies that you have made.

PDF-PATTERN

Files are downloaded directly from your page on Etsy – after purchase they will be added to “purchases”. They are PDF-files and I recommend a pdf-reader with a setting to switch to “real size” and “automatic portrait/landscape” when printing. For example, Adobe Reader or PDF X-change. It is important to measure the control box so that it is exactly 30mm * 30mm or your garment might not end up the way you imagine. PDF is easy to print. Utilize the layers to only print the page you want to sew and cut it directly. There are arrows on the pattern and they should align towards each other when you put the pattern together. There is also an overview of the pattern where you can see how the different pages should be positioned.

Because a PDF-pattern is a digital product there are no refunds or returns.

The PDF-Pattern may not be copied and/or sold/donated to a third party.

LICENSE

When you purchase a pattern, you agree to an agreement with Sewingheartdesign that you accept the license with its terms and conditions. Violation of this agreement will be brought before the Swedish court.

I hope you will be satisfied with the pattern! Good luck with the sewing!

/Marie Sidén

Sewingheartdesign

fabric requirement

Fabric required is calculated with pre-washed fabric, 160 cm with, seam allowance included (1 cm) and hem (3 cm)

PANTS

<u>SIZE</u>	<u>LOW WAIST</u>	<u>HIGH WAIST</u>	<u>ZIPPER</u>
50	25 cm	35 cm	10 cm
56	29 cm	40 cm	11 cm
62	32 cm	44 cm	11 cm
68	36 cm	49 cm	12 cm
74	39 cm	54 cm	12 cm
80	43 cm	59 cm	13 cm
86	47 cm	63 cm	13 cm
92	50 cm	68 cm	14 cm
98	54 cm	73 cm	14 cm
104	58 cm	78 cm	15 cm
110	61 cm	82 cm	16 cm
116	65 cm	87 cm	16 cm
122	68 cm	92 cm	17 cm
128	72 cm	96 cm	17 cm
134	76 cm	101 cm	18 cm
140	79 cm	106 cm	18 cm
146	83 cm	111 cm	19 cm
152	86 cm	115 cm	19 cm
158	90 cm	120 cm	20 cm

SHOULDER STRAPS, ELASTICS

<u>SIZE</u>	<u>LOW WAIST</u>	<u>HIGH WAIST</u>
50	56 cm	36 cm
56	60 cm	38 cm
62	64 cm	39 cm
68	68 cm	41 cm
74	71 cm	42 cm
80	75 cm	44 cm
86	79 cm	46 cm
92	83 cm	47 cm
98	87 cm	49 cm
104	91 cm	51 cm
110	94 cm	52 cm
116	98 cm	54 cm
122	102 cm	55 cm
128	106 cm	57 cm
134	110 cm	59 cm
140	114 cm	60 cm
146	117 cm	62 cm
152	121 cm	63 cm
158	125 cm	65 cm

SEAM/HEM ALLOWANCE NOT INCLUDED.

The pattern is intended for non-stretchy fabrics such as rainwear, softshell, beaver nylon.

Choose low pants with zipper or high hinge pants.

Choose to divide the pattern by the oblique lines for two colors.

Write on the pattern part you cut out what it is and draw the thread direction.

- TIP 1 Choose narrow or loose model on the pants.
- TIP 2 Insert the snap buttons on the side of the pants up at the armhole or down in the pants legs to get a tighter fit.
- TIP 3 Put a piece of elastic in the back in the line for low pants to get a more tight fit. Sew buttons and use buttonhole elastic so you can easily adjust.
- TIP 4 Put elastic in the sleeve / leg end so they sit better around mittens / boots.
- TIP 5 Sew 2 buttons on each side on the inside of the trouser leg. Cut two pieces of buttonhole ribs, fold the edges and place it to prevent the pants from sliding up.

LOW WAIST PANTS	p 5
HIGH WAIST PANTS	p 14
HIGH WAIST PANTS WITH LINING	p 24

low pants



Cut out the pattern parts. Choose whether to sew woven fabric or waistband.

Divided for two-color: Write on the pattern part to cut away what it is and draw the thread direction.

(See tutorial for high waist for how to sew the parts together.)



Cut out all the parts.



Sew all the colors if you have divided the pattern.



Sew a decorative stitch / knitting over all divisions.



Put both front pieces right sides together and sew up the crotch.



Sew the crotch seam



Sew the side seams together.



Fold sleeve / leg cuff in half and stitch the short side.



If you want to have elastic in the waistband: Wrap the elastic band and zigzag over the joints.



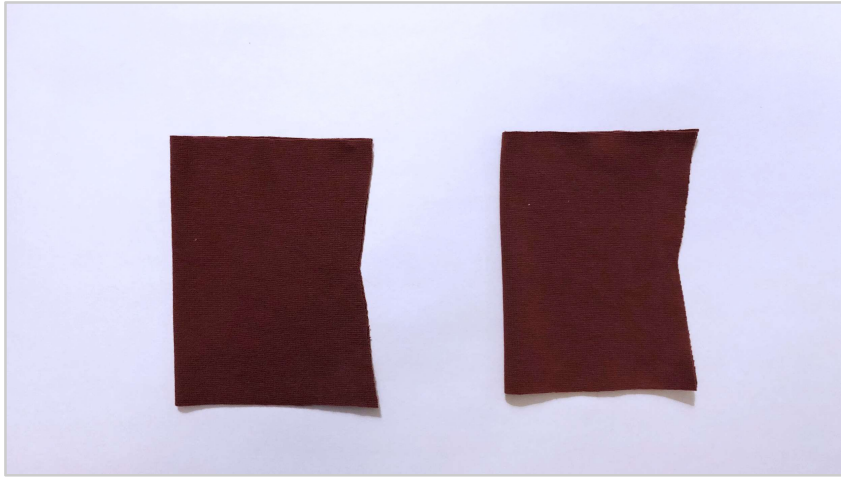
Put the elastic in the waistband and pin the waistband together.



Pin the waistband / waist cushion straight to the right with the pants and sew together.



Stitched waist.



Fold the cuffs midway along the thread direction.



Sew the cuffs together.



Fold the cuffs in the middle with the seam inward.



Pin the cuffs in the leg ends straight to the right.



Sew up cuffs with trouser legs.

Cut two pieces of elastic, add seam allowance. Sew a zigzag stitch at the end of the elastic so that it does not scratch itself.



Place a piece of elastic at each mark on the front piece and sew.



You can choose to sew suspenders back straight, put together by a buckle or cross them.



Done!

high pants



Cut out the pattern parts.

Divided for two-color: Write on the pattern part to cut away what it is and draw the thread direction.



Cut out all the parts.



Sew all the colors if you have divided the pattern.



If the fabric allows, press the seam.



Sew a decorative stitch / knitting over all divisions.

If you are going to sew a zipper - do it now before the seams are sewn together.



Put the front pieces straight to the right, do the same for the backs.



Sew the crotch seams.



Sew the front and back pieces together with the inner leg seam.



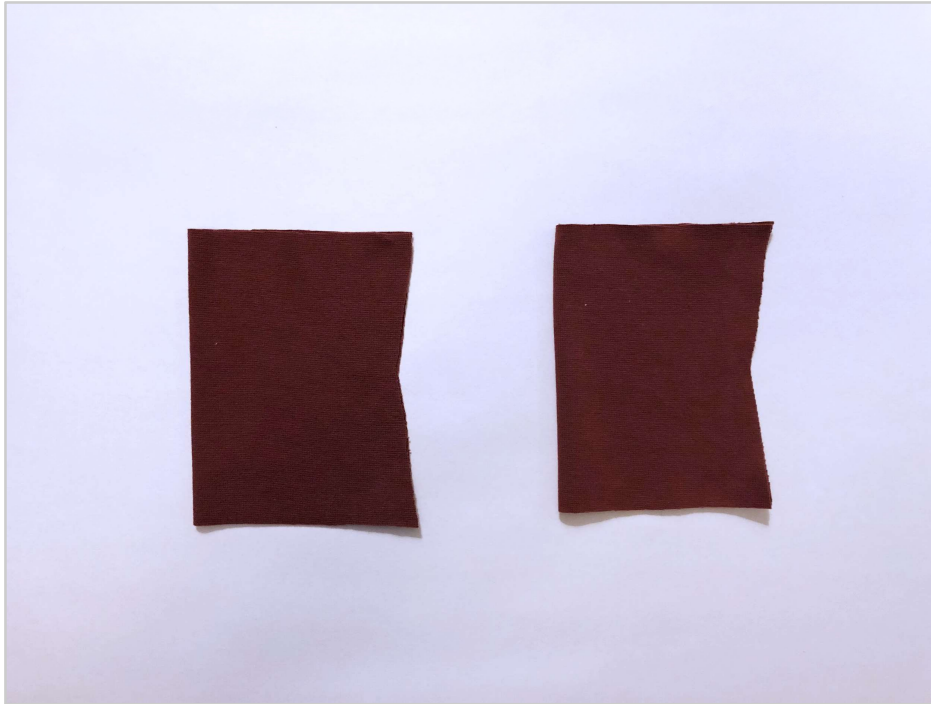
Sew one outer leg seam.



Sew knit binding along the opening at the top.



Sew the other outer leg seam and insert the seam with straight stitch at the top.



Fold the cuffs midway along the thread direction.



Sew the cuffs together.



Fold the cuffs in the middle with the seam inward.



Pin the cuffs in the leg ends straight to the right.



Sew up cuffs with trouser legs.



Cut two pieces of elastic, add seam allowance. Sew a zigzag stitch at the end of the elastic so that it does not scratch itself.

Place a piece of elastic at each mark on the front piece and sew.



Done!

lining

Cut out the pattern parts.

Divided for two-color: Write on the pattern part to cut away what it is and draw the thread direction.



Cut out all the parts.

If you have divided the pattern: See the tutorial for trousers with high waist.



Put the front pieces straight to the right, do the same for the backs. Sew the border stitches together.



Use a straight stitch if you are using a stiffer fabric.



Sew the front and back pieces together with the inner leg seam.



Sew the outer leg seams.



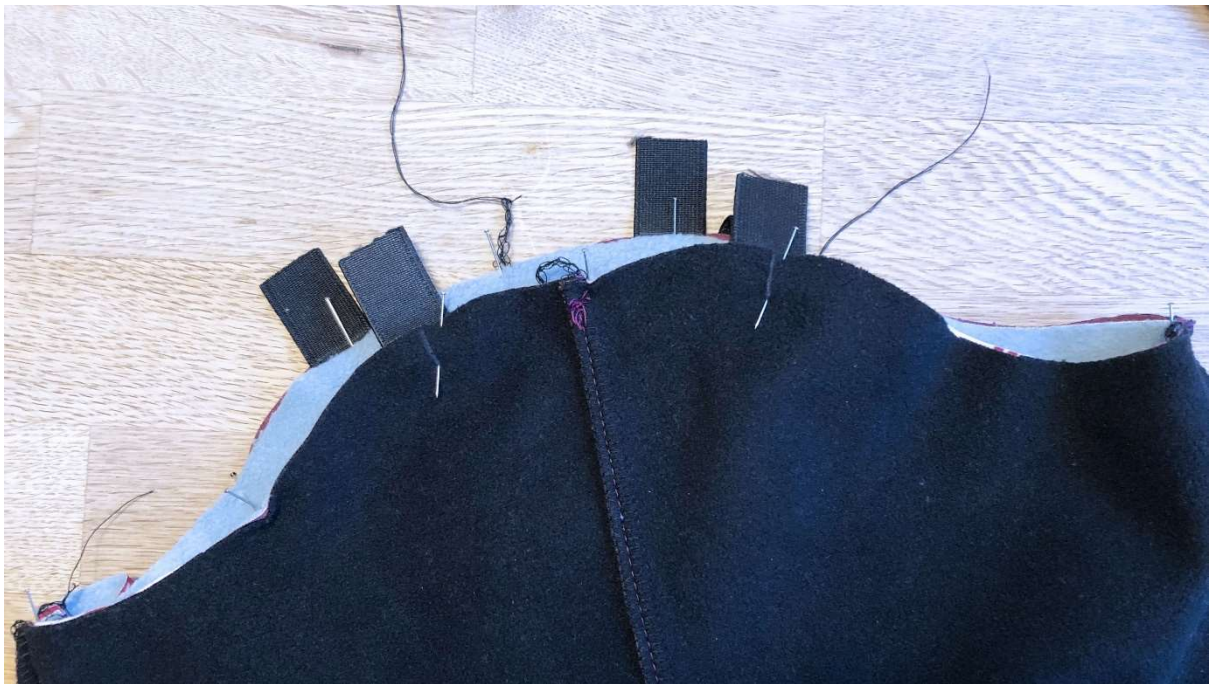
Serge the lower edges of the lining with overlock or zigzag.



Sew the lining together in the sides.



If you want to be able to open the braces, put the female on the front with elastic band.



Pin the lining on the pants straight to the right. Don't forget to insert the straps for the braces between.



Turn the pants and lining right.



Sew a knit along the edge to keep the lining in place. You can also put a stitch in the side seam at the bottom of the lining.



Fold sleeve / leg cuff in half and stitch the side.



Fold the cuffs in the middle with the seam inward. Pin the cuffs in the leg ends straight to the right.



Sew up cuffs with legs.



Done!