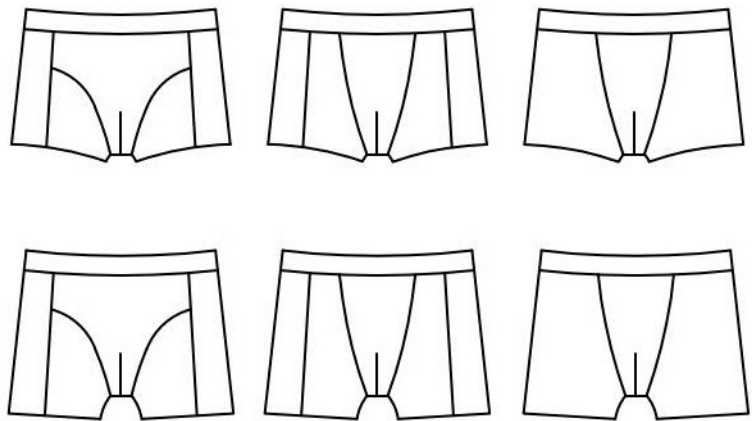


tutorial mister boxer

eu size XS – 4XL



This pattern has many variations. Split the side for effect.
Seam allowance is not included. Add seam allowance.
For stretch fabrics.



sewingheartdesign.com

information

SALES LICENSE

Included with the patterns is a sales license. That means that you as individual who sews as a hobby or owns a business have the right to use the patterns to sell clothes. The license applies only for the buyer of the pattern and the license terms cannot be transferred to a third party. Which means that you cannot let another physical or legal person produce clothes on a large scale on your behalf.

SEAM ALLOWANCE/HEM NOT INCLUDED

You should add seam allowance on ALL patterns except where you intend to add binding or if the patterns says otherwise. I recommend that you read through the sewing instructions. Within it are instructions both in picture and text which will facilitate your sewing.

PAPER PATTERN

The paper patterns are sensitive to moisture and tear. Handle with care. On certain paper patterns the parts are split due to lack of space. Read the instructions carefully to know if they are to be stenciled and put together in a certain way. When you sell your pattern, you must destroy all copies that you have made.

PDF-PATTERN

Files are downloaded directly from your page on Etsy – after purchase they will be added to “purchases”. They are PDF-files and I recommend a pdf-reader with a setting to switch to “real size” and “automatic portrait/landscape” when printing. For example, Adobe Reader or PDF X-change. It is important to measure the control box so that it is exactly 30mm * 30mm or your garment might not end up the way you imagine. PDF is easy to print. Utilize the layers to only print the page you want to sew and cut it directly. There are arrows on the pattern and they should align towards each other when you put the pattern together. There is also an overview of the pattern where you can see how the different pages should be positioned.

Because a PDF-pattern is a digital product there are no refunds or returns.

The PDF-Pattern may not be copied and/or sold/donated to a third party.

LICENSE

When you purchase a pattern, you agree to an agreement with Sewingheartdesign that you accept the license with its terms and conditions. Violation of this agreement will be brought before the Swedish court.

I hope you will be satisfied with the pattern! Good luck with the sewing!

/Marie Sidén

Sewingheartdesign

fabric requirement

Fabric required is calculated with pre-washed fabric, 160 cm with, seam allowance included (1 cm) and hem (2 cm).

FABRIC RQUIREMENT

XS-S	30 CM
M-L	35 CM
XL-2XL	40 CM
3XL-4XL	45 CM

ELASTIC

<u>SIZE</u>	<u>FIRM</u>	<u>SOFT</u>
XS	66	61 CM
S	72	67 CM
M	78	72 CM
L	84	78 CM
XL	90	84 CM
2XL	96	89 CM
3XL	102	95 CM
4XL	108	100 CM

pages

MODEL 1	p 4
MODEL 2	p 11
MODEL 3	p 18
ELASTIC	p 24

modell 1

SEAM ALLOWANCE IS NOT INCLUDED. ADD HEM/SEAM ALLOWANCE.





Choose model and cut out the parts with the same number. For eg model 1 all parts end with 1.



Stitch lower part of A (crotch piece) on both pieces.



Place A (crotch piece) on both sides of B (front leg piece) and stitch. Both A are right sides together with B (front leg piece) in-between.



The result.



Place B (front leg piece) right sides with A (crotch piece) on the left side. Fold over the bottom A (crotch piece) (black in the photo) on top of the left edge of B (front leg piece).



Roll up both B (front leg piece) between both A (crotch piece). Fold left A (crotch piece) on top of all and let the edges meet. Stitch the edge.



Fold it out and it will look like this.



Stitch the side pieces right sides with the front piece.



Place the back piece right sides with the front piece.
Stitch the sides and crotch.



Elastic, p 22.



Hem the legs. Done!

model 2

SEAM ALLOWANCE IS NOT INCLUDED. ADD HEM/SEAM ALLOWANCE.



Choose model and cut out the parts with the same number. For eg model 2 all parts end with 2.



Sy ihop A (pungpåsen) nedre del på båda tygbitarna.



Stitch lower part of A (crotch piece) on both pieces.



Place A (crotch piece) on both sides of B (front leg piece) and stitch. Both A are right sides together with B (front leg piece) in-between.



The result.



Place A+A (crotch pieces) on either side of B (front leg piece) and stitch. A (crotch piece) are right sides together with B (front leg piece) in-between.



Roll up both B (front leg piece) between both A (crotch piece). Fold left A (crotch piece) on top of all and let the edges meet. Stitch the edge.



Fold it out and it will look like this.



Stitch C (side pieces) right sides with the front piece.



Stitch D (back piece) right sides with C (side piece).



Stitch the side seams and the crotch.

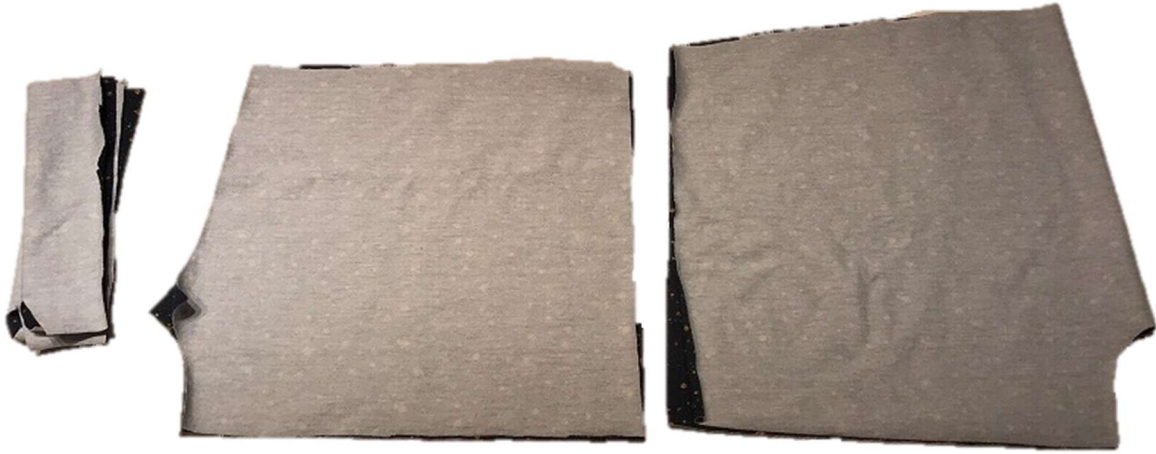


Elastics p 22.

Hem the legs.
Done!

model 3

SEAM ALLOWANCE IS NOT INCLUDED. ADD HEM/SEAM ALLOWANCE.



Choose model and cut out the parts with the same number. For eg model 3 all parts end with 3.



Stitch lower part of A (crotch piece) on both pieces.



Place A (crotch piece) on both sides of B (front leg piece) and stitch. Both A are right sides together with B (front leg piece) in-between.



The result.



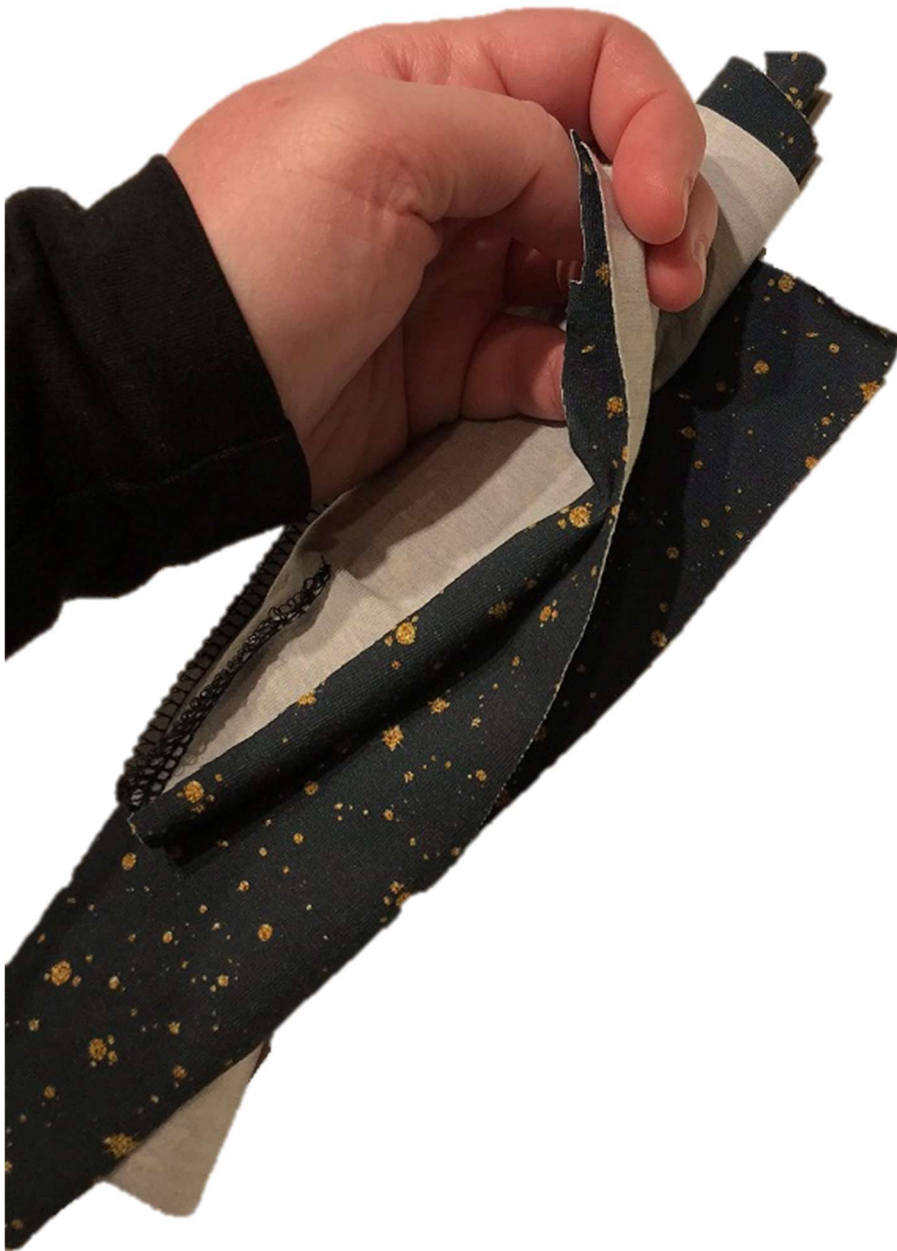
Place B (front leg piece) right sides.



Fold over A (crotch piece) on top of the right edge of B (front leg piece).



Roll up both B (front leg piece) between both A (crotch piece).



Fold left A (crotch piece) on top of all and let the edges meet.



Stitch the edge (A+B+A).



Front/outside



Inside.

Fold it out and it will look like this.

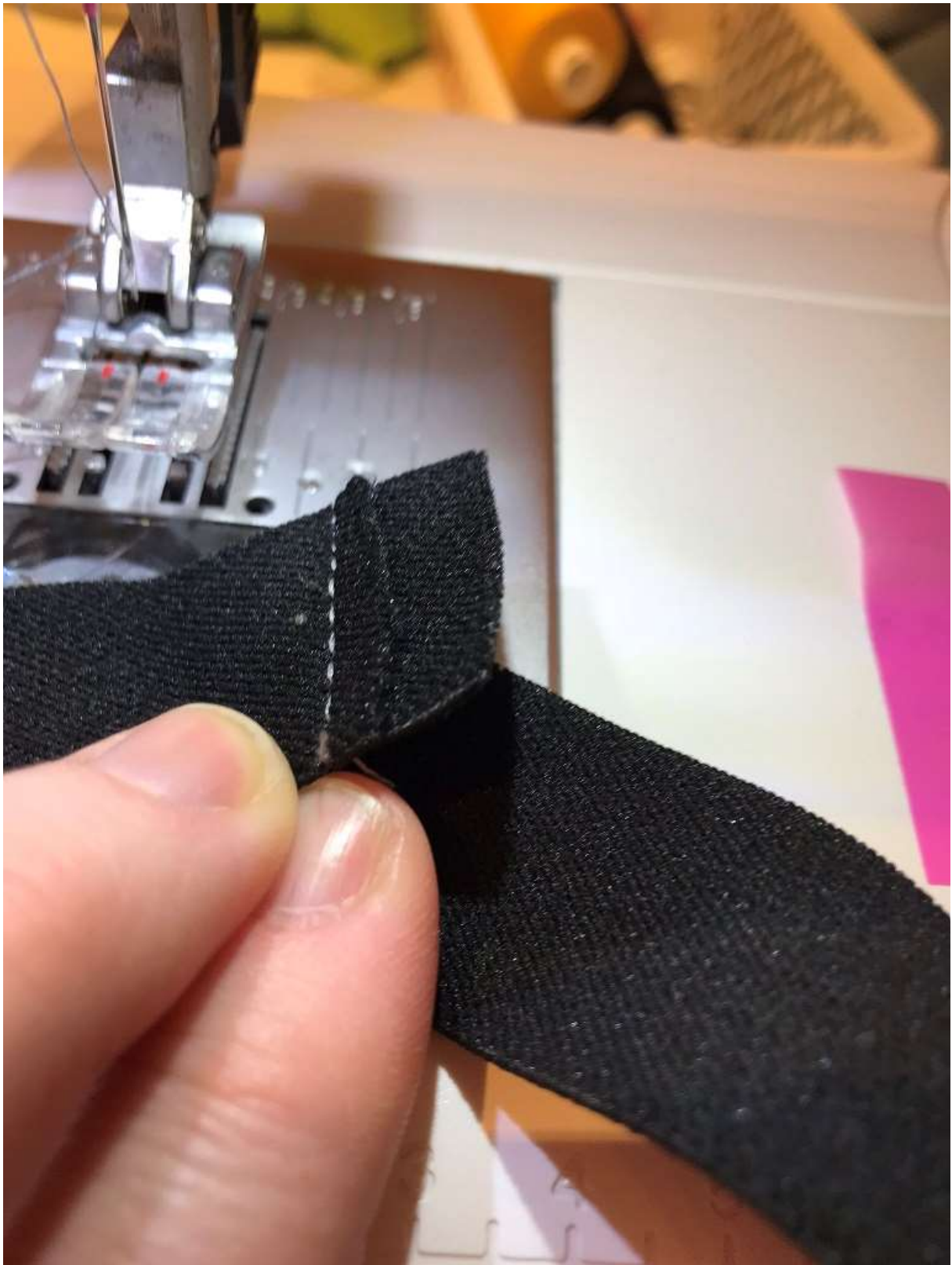


Stitch the back piece right sides with the front piece. Stitch the crotch.

elastic



Cut the elastic and place the edges 1cm apart.



Stitch with a enforced stitch or zigzag.



Fold over the longer end.



Stitch with a enforced stitch or zigzag.



Pin the elastic in four places.



Pin at the sides and midpoint at front and back. Stretch the elastic while stitching for a smooth finish.



Stitch with zigzag, 3-step zigzag or coverstitch.



Hem the legs.

Done!