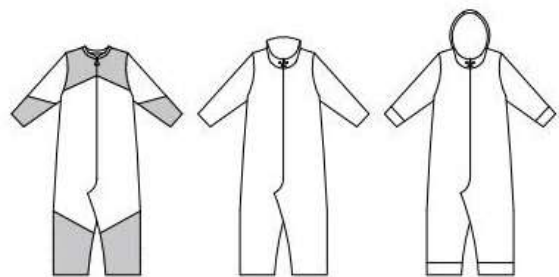


tutorial

playtime kids overall

storlek 50 - 158



This pattern has a number of different variations. It is possible to make single-colored or split sleeves / legs with different colors. Neck collar, collar or hood. Ribbed leg / cuff or hemmed with elastic.

Seam allowance is not included.



sewingheartdesign.com

information

SALES LICENSE

Included with the patterns is a sales license. That means that you as individual who sews as a hobby or owns a business have the right to use the patterns to sell clothes. The license applies only for the buyer of the pattern and the license terms cannot be transferred to a third party. Which means that you cannot let another physical or legal person produce clothes on a large scale on your behalf.

SEAM ALLOWANCE/HEM NOT INCLUDED

You should add seam allowance on ALL patterns except where you intend to add binding or if the patterns says otherwise. I recommend that you read through the sewing instructions. Within it are instructions both in picture and text which will facilitate your sewing.

PAPER PATTERN

The paper patterns are sensitive to moisture and tear. Handle with care. On certain paper patterns the parts are split due to lack of space. Read the instructions carefully to know if they are to be stenciled and put together in a certain way. When you sell your pattern, you must destroy all copies that you have made.

PDF-PATTERN

Files are downloaded directly from your page on Etsy – after purchase they will be added to “purchases”. They are PDF-files and I recommend a pdf-reader with a setting to switch to “real size” and “automatic portrait/landscape” when printing. For example, Adobe Reader or PDF X-change. It is important to measure the control box so that it is exactly 30mm * 30mm or your garment might not end up the way you imagine. PDF is easy to print. Utilize the layers to only print the page you want to sew and cut it directly. There are arrows on the pattern and they should align towards each other when you put the pattern together. There is also an overview of the pattern where you can see how the different pages should be positioned.

Because a PDF-pattern is a digital product there are no refunds or returns.

The PDF-Pattern may not be copied and/or sold/donated to a third party.

LICENSE

When you purchase a pattern, you agree to an agreement with Sewingheartdesign that you accept the license with its terms and conditions. Violation of this agreement will be brought before the Swedish court.

I hope you will be satisfied with the pattern! Good luck with the sewing!

/Marie Sidén

Sewingheartdesign

fabric requirement

Fabric required is calculated with pre-washed fabric, 160 cm with, seam allowance included (1 cm) and hem (3 cm)

STRL	OVERALL	DRAGKEDJA MED KRAGE (MJUK KRAGE: -4CM)
50	50 cm	30 cm
56	56 cm	32 cm
62	61 cm	35 cm
68	67 cm	37 cm
74	72 cm	40 cm
80	78 cm	42 cm
86	83 cm	45 cm
92	89 cm	47 cm
98	94 cm	50 cm
104	140 cm	52 cm
110	148 cm	54 cm
116	155 cm	57 cm
122	164 cm	59 cm
128	171 cm	62 cm
134	179 cm	64 cm
140	186 cm	67 cm
146	195 cm	69 cm
152	202 cm	72 cm
158	210 cm	74 cm

pages

SEAM/HEM ALLOWANCE NOT INCLUDED.

Choose a soft collar in the neck line or attach hood/collar.

OVERALL	p 4
ZIPPER	p 8
SLEEVE CUFF	p 17
INSET SLEEVE CUFF	p 20
FOLDABLE CUFF	p 22
SOFT NECK COLLAR	p 25
COLLAR AND DETACHABLE HOOD	p 31
HOOD/COLLAR	p 38

overall

The images may look different from the pattern, but the approach is the same.



Divided for two-color: Write on the pattern part to cut away what it is and draw the thread direction.



Cut out all the parts.



Sew all the colors if you have divided the pattern.



Sew a decorative stitch / knitting over all divisions.

zipper



Cut the wind strip.



Fold the length and sew diagonally across the end. Cut off the overflow very close to the seam.



Fold it around the zipper. Put the zipper straight against the front piece. Fold the upper edge of the zipper and sew it to the front piece. (Note that the picture has a too short wind strip)



Finished protection for the zipper.



Sew the zipper on the other side.



Put both front pieces right sides together and sew up the crotch.



Sew a straight stitch the crotch and a bit past where the zipper ends.



Sew the shoulders together.



Place the sleeve with the marking in front of the front piece. Align the mark on the shaft to the shoulder seam. Sew sleeves.



Sew the side seams together.



Sew the crotch seam

sleeve cuffs



Fold sleeve / leg cuff lengthwise and stitch the long side.



How does it look when it is sewn.

Fold the mud on half, with the seam inwards. Insert it into the sleeve, right sides together, and sew.



Unfold all the cuffs.

inset sleeves

Cut the sleeve with a hem.



Sew the cuff and fold it double. Add the outside of the sleeve and sew.



Fold the ribbing and sew close to the edge as you can.



Unfold the cuff. Done.

foldable cuff



Cut two of both parts.



Fold in half with the right side out.



Add the short On top of the long.



Fold over the long one.



Carefully fold up the bottom layer



and place it over the rest.



Sew the edges together.



Unfold the cuff.



Ready to sew in the sleeves.

soft neck collar



Cut the cuff against the folded edge.



Fold it in half, wrong sides together.



Pin it around the neck. Do not pull the cuff first 2-3 cm on both sides. Adjust remaining collar evenly along the neck.



Sew it with stretchy seam. The last bit can end with regular straight stitch.





Sew a straight stitch along the zipper from the front.



Sew a decor / cover stitch around the neckline.



Done!

collar and detachable hood

Cut out double collars.



The rounded part is down to the jacket.

Put them against each other and sew around the edge. In the picture there is a flossy softshell and I have laid them right side to wrong side to get the inside of the collar flossed.



Topstitch around the edge.



Fit the appropriate number of push buttons on the outer fabric. If the fabric is thin, a reinforcement on the back is required.



Cut a neck opening strip that is about 80% of the neck opening and 4cm wide.
Fold in short side and fold it in length so that there will be a smooth edge at the beginning.



Pin the collar to the jacket. Also put your neckline strip and hanging loop.





Fold neck edging strip and topstitch close to the edge.



Hem / attach facing or knit binding the edge of the hood.

NOTE! The hood consists of three parts



Put pushbuttons in the same place as the collar.

NOTE! The hood consists of three parts



Attatch the hood.

NOTE! The hood consists of three parts

hood/collar

Sew stitches / reinforcements in the lower corner of the hood and, any eyelets are now placed. Eyelets for drawstring fitted with interfacing / inserts before the hood / collar sewn.



Picture. Lining of the hood. NOTE! The hood consists of three parts

Add pieces right sides together and sew the outer main turn on both sides.



It might be easier to attach the cord in the hoodie already., Stitch the middle of the cord on top of the hoodie, using a straight stitch. (this will keep the cord in place)



Facing: Put the facing on the right side with the hoodie and stitch the edge front.

Lined hoodie: Put the hoodies right sides together and stitch the front. Reverse inside out.



Hoodie and collar Follow the description above but put the hoodie between the collar and jacket's right sides before stitching.

Collar: Put the pieces on the right sides and stitch the outer edges. Pin the right sides and begin in the center back. Stitch the neck edges.

Hoodie: Pin the right sides and begin in the center back. Stitch all the way around.



Put the zipper on the right sides on the front piece and up towards the hoodie or collar.



The zipper should begin at the exact center of the collar.



Fold the margin of the zipper out and then fold over the inside of the collar.

If the zipper reaches the hem, fold up the hem to the front and attach the zipper between the fabrics. Stitch with a zipper custom presser foot or with a regular presser foot, close to the zipper teeth. Fold the hem to the back and hem.



Reverse the collar.