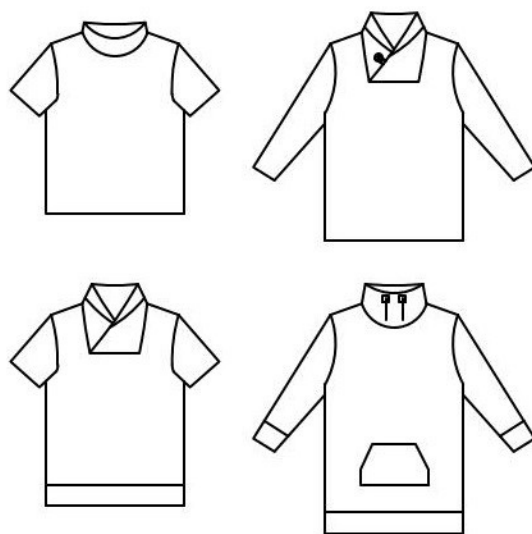


# tutorial

## mister polo

eur size XS – 10XL



This pattern has different possibilities for variation. Two lengths. Two short sleeves or long sleeves with / without cuffs. Cuff in the waist and a kangaroo pocket. Low or high polo shirt or wrap collar with / without button.

Seam allowance is not included. Add seam allowance for hem.



[sewingheartdesign.com](http://sewingheartdesign.com)

# information

## **SALES LICENSE**

Included with the patterns is a sales license. That means that you as individual who sews as a hobby or owns a business have the right to use the patterns to sell clothes. The license applies only for the buyer of the pattern and the license terms cannot be transferred to a third party. Which means that you cannot let another physical or legal person produce clothes on a large scale on your behalf.

## **SEAM ALLOWANCE/HEM NOT INCLUDED**

You should add seam allowance on ALL patterns except where you intend to add binding or if the patterns says otherwise. I recommend that you read through the sewing instructions. Within it are instructions both in picture and text which will facilitate your sewing.

## **PAPER PATTERN**

The paper patterns are sensitive to moisture and tear. Handle with care. On certain paper patterns the parts are split due to lack of space. Read the instructions carefully to know if they are to be stenciled and put together in a certain way. When you sell your pattern, you must destroy all copies that you have made.

## **PDF-PATTERN**

Files are downloaded directly from your page on Etsy – after purchase they will be added to “purchases”. They are PDF-files and I recommend a pdf-reader with a setting to switch to “real size” and “automatic portrait/landscape” when printing. For example, Adobe Reader or PDF X-change. It is important to measure the control box so that it is exactly 30mm \* 30mm or your garment might not end up the way you imagine. PDF is easy to print. Utilize the layers to only print the page you want to sew and cut it directly. There are arrows on the pattern and they should align towards each other when you put the pattern together. There is also an overview of the pattern where you can see how the different pages should be positioned.

Because a PDF-pattern is a digital product there are no refunds or returns.

The PDF-Pattern may not be copied and/or sold/donated to a third party.

## **LICENSE**

When you purchase a pattern, you agree to an agreement with Sewingheartdesign that you accept the license with its terms and conditions. Violation of this agreement will be brought before the Swedish court.

I hope you will be satisfied with the pattern! Good luck with the sewing!

/Marie Sidén

Sewingheartdesign

# fabric requirement

Fabric required is calculated with pre-washed fabric, 160 cm with, seam allowance included (1 cm) and hem (3 cm)

BODY LENGTH      160/180/200 cm

SIZE	SHORT SWEATER	LONG SWEATER	SLEEVE, SHORT	SLEEVE, LONG
XS-6XL	75/80/80 cm	85/90/95 cm	30/35 cm	75/80/85 cm
7XL-10XL	160/165/170 cm	180/190/200 cm	35/40 cm *	80/80/90 cm *

\* FITS BESIDES FRONT/BACK PIECES

## pages

SEAM ALLOWANCE IS NOT INCLUDED.

ADD HEM ALLOWANCE.

Choose your body length on the pattern.

SWEATER	p 4
POLO COLLAR	p 7
OPEN COLLAR	p 9
POCKET	p 11

# sweater

SÖMSMÅN/FÅLL INGÅR EJ.

Välj längd efter hur lång du är.



Cut out all pieces you're planning to use.



Add the front and back right sides together. Sew the shoulders together.



Sew on the sleeves.



Sew the side seams together.





Hemming cuffs.

CUFFS: Fold the cuff in the thread direction and stitch the long side. Fold the right and tuck in the sleeve, right sides together, and sew.



Hem the bottom.

Waist band: Fold the waist band in the thread direction and sew the short side. Fold right and pin in place in four places in the bottom of the shirt, right sides together, and sew. Finished!

# polo collar



Fold collar right sides together and sew the short side. Unfold the collar so it becomes wrong sides together.



Pin it in four places.



Sew it in the neck opening.



# open collar



Fold lengthwise, wrong sides together.





Pin the two inclined edges against the lower edge of the larger neck opening.



Sew around the neck.



Sew the decorative stitch around the edge.

## pocket

Add hem on the sides if you want to fold in as you sew it for a cleaner pocket or leave for a tougher pocket. Fold in and sew the hem with a decorative stitch. It is also possible to sew the pocket on the inside as a hidden pocket.