

tutorial

cumulus

eu size XS – 4XL



This pattern comes with a large number of variations. Long or short design. Collar, hoodie or why not both collar and hoodie. Pockets or inner pockets. The pattern is made for fabrics with no stretch. For example thicker woven, softshell, polyester or vinyl fabric.

Seam allowance is not included. Add hem allowance.



sewingheartdesign

<https://sewingheartdesign.wordpress.com/>

information

SALES LICENSE

Included with the patterns is a sales license. That means that you as individual who sews as a hobby or owns a business have the right to use the patterns to sell clothes. The license applies only for the buyer of the pattern and the license terms cannot be transferred to a third party. Which means that you cannot let another physical or legal person produce clothes on a large scale on your behalf.

SEAM ALLOWANCE/HEM NOT INCLUDED

You should add seam allowance on ALL patterns except where you intend to add binding or if the patterns says otherwise. I recommend that you read through the sewing instructions. Within it are instructions both in picture and text which will facilitate your sewing.

PAPER PATTERN

The paper patterns are sensitive to moisture and tear. Handle with care. On certain paper patterns the parts are split due to lack of space. Read the instructions carefully to know if they are to be stenciled and put together in a certain way. When you sell your pattern, you must destroy all copies that you have made.

PDF-PATTERN

Files are downloaded directly from your page on Etsy – after purchase they will be added to “purchases”. They are PDF-files and I recommend a pdf-reader with a setting to switch to “real size” and “automatic portrait/landscape” when printing. For example, Adobe Reader or PDF X-change. It is important to measure the control box so that it is exactly 30mm * 30mm or your garment might not end up the way you imagine. PDF is easy to print. Utilize the layers to only print the page you want to sew and cut it directly. There are arrows on the pattern and they should align towards each other when you put the pattern together. There is also an overview of the pattern where you can see how the different pages should be positioned.

Because a PDF-pattern is a digital product there are no refunds or returns.

The PDF-Pattern may not be copied and/or sold/donated to a third party.

LICENSE

When you purchase a pattern, you agree to an agreement with Sewingheartdesign that you accept the license with its terms and conditions. Violation of this agreement will be brought before the Swedish court.

I hope you will be satisfied with the pattern! Good luck with the sewing!

/Marie Sidén

Sewingheartdesign

fabric requirement

Fabric required is calculated with pre-washed fabric, 135 cm with, seam allowance included (1 cm) and hem (3 cm).

BODY LENGTH: 150/170/190 cm

SIZE	COAT	JACKET	HOOD	COLLAR
XS -XL	155/165/170 cm	170/180/185 cm	40 cm	10 cm
2XL-4XL	255/270/280 cm	285/300/310 cm	40 cm	10 cm

ZIPPER, OPENABLE

SIZE	COAT	JACKET	HOOD/COLLAR
XS - XL	55/60/65 cm	80/85/90 cm	+10 cm
2XL-4XL	60/65/70 cm	85/90/95 cm	+10 cm

pages

SEAM/HEM ALLOWANCE NOT INCLUDED.

Choose your body length on the pattern.

Choose to hem/bind the neck line or attach hood/collar.

COAT	p 4
HOOD	p 6
COLLAR	p 8
CUFFS	p 9
ZIPPER	p 10
NECKLINE BINDING	p 16
POCKETS WITH LID	p 18

coat

Seam allowance is not included. Add hem allowance.

The pattern is made for fabrics with no stretch. For example thicker woven, softshell, polyester or vinyl fabric.

The waist cuff needs to be adjusted height wise with the length of the zipper you've chosen.

Choose the length of the jacket/coat based on your body length.
Choose collar or hoodie. (or go with both!)



Picture. Facing and hoodie.



Picture: Pockets.



Picture. Back and front piece.

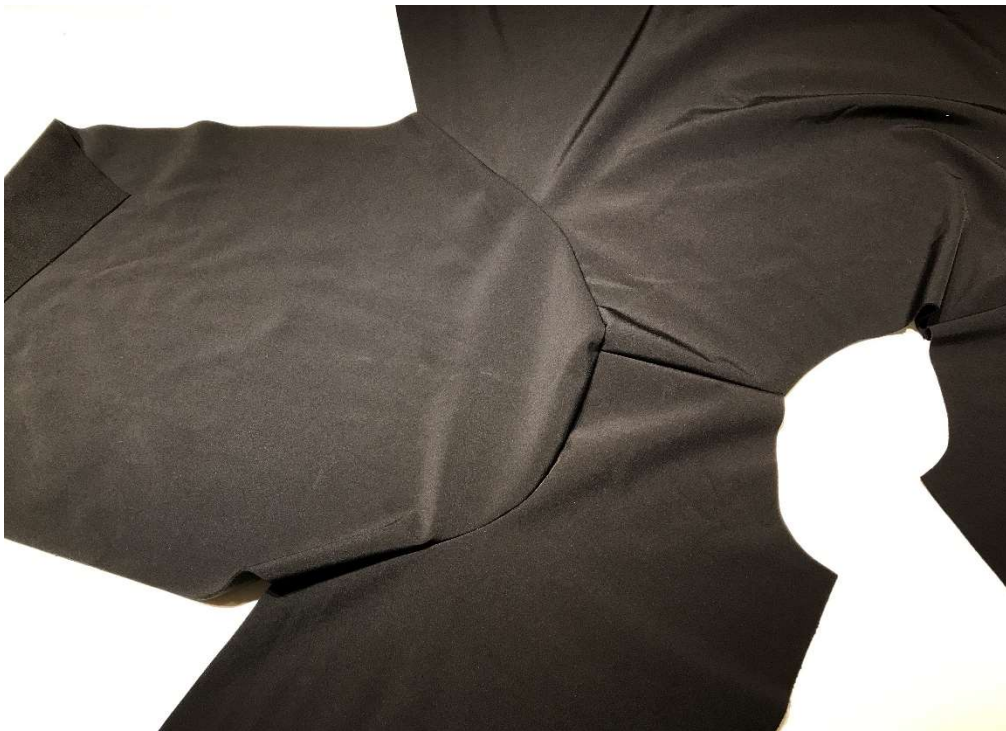


Picture: Arms

Cut out the pieces you've chosen for your garment.



Stitch the shoulders.



Attach the sleeves.

hood



Picture: Interfacing of the hoodie.

Attach facing/strengthening in the bottom corner of the hoodie and attach eyelets if chosen to use them. Eyelets for cords should be mounted with fusible interfacing before the hoodie/collar is stitched.

Put the pieces on the right sides and stitch the outer curve on both sides.



Picture: Hood with interfacing.

It might be easier to attach the cord in the hoodie already. Stitch the middle of the cord on top of the hoodie, using a straight stitch. (this will keep the cord in place)



Facing: Put the facing on the right side with the hoodie and stitch the edge front.

Lined hoodie: Put the hoodies right sides together and stitch the front. Reverse inside out.



Hoodie and collar Follow the description above but put the hoodie between the collar and jackets right sides before stitching.

Collar: Put the pieces on the right sides and stitch the outer edges. Pin the right sides and begin in the center back. Stitch the neck edges.

Hoodie: Pin the right sides and begin in the center back. Stitch all the way around.



Stitch the side seams.

cuffs



Stitch the cuffs and fold it. Put it inside the sleeve with raw edges out, right sides together. Make sure that the seam on the cuff lines up with the seam on the sleeve. Stitch together.



Folded arm: Fold the hem and stitch around.

zipper



The length on the coat is adjustable with the length of the zipper, from the middle front and ends a bit higher than the hem of the coat. A facing could be added with the zippers wrong side before being stitched to the front piece.



Put the zipper on the right sides on the front piece and up towards the hoodie or collar.



The zipper should begin at the exact center of the collar.

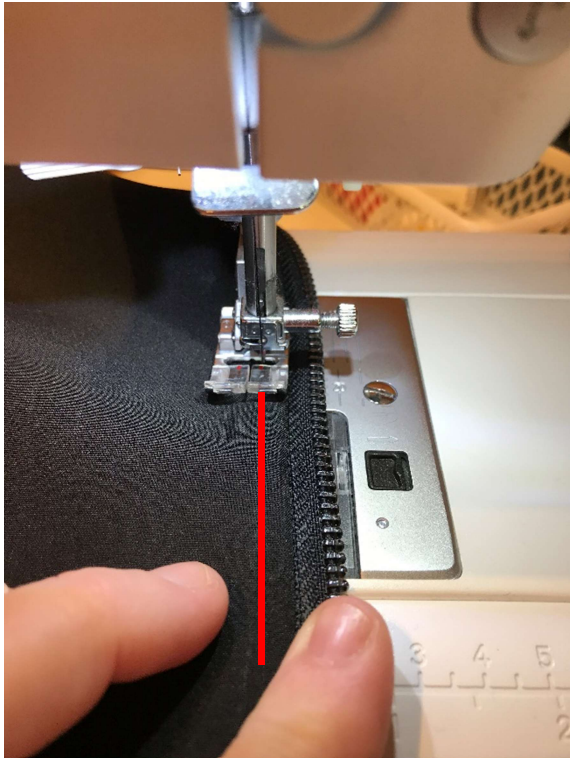


Fold the margin of the zipper out and then fold over the inside of the collar.

If the zipper reaches the hem, fold up the hem to the front and attach the zipper between the fabrics. Stitch with a zipper custom presser foot or with a regular presser foot, close to the zipper teeth. Fold the hem to the back and hem.



Reverse the collar.



Do a straight stitch on the right side, close to the zipper. Start on the bottom on one side and go up, around the collar and go back on the other side.



Done

neckline binding



Cut a neckline binding, 80% of the neckline and 4 cm width. Fold the short side and fold it lengthwise to make a smooth edge in the center middle.



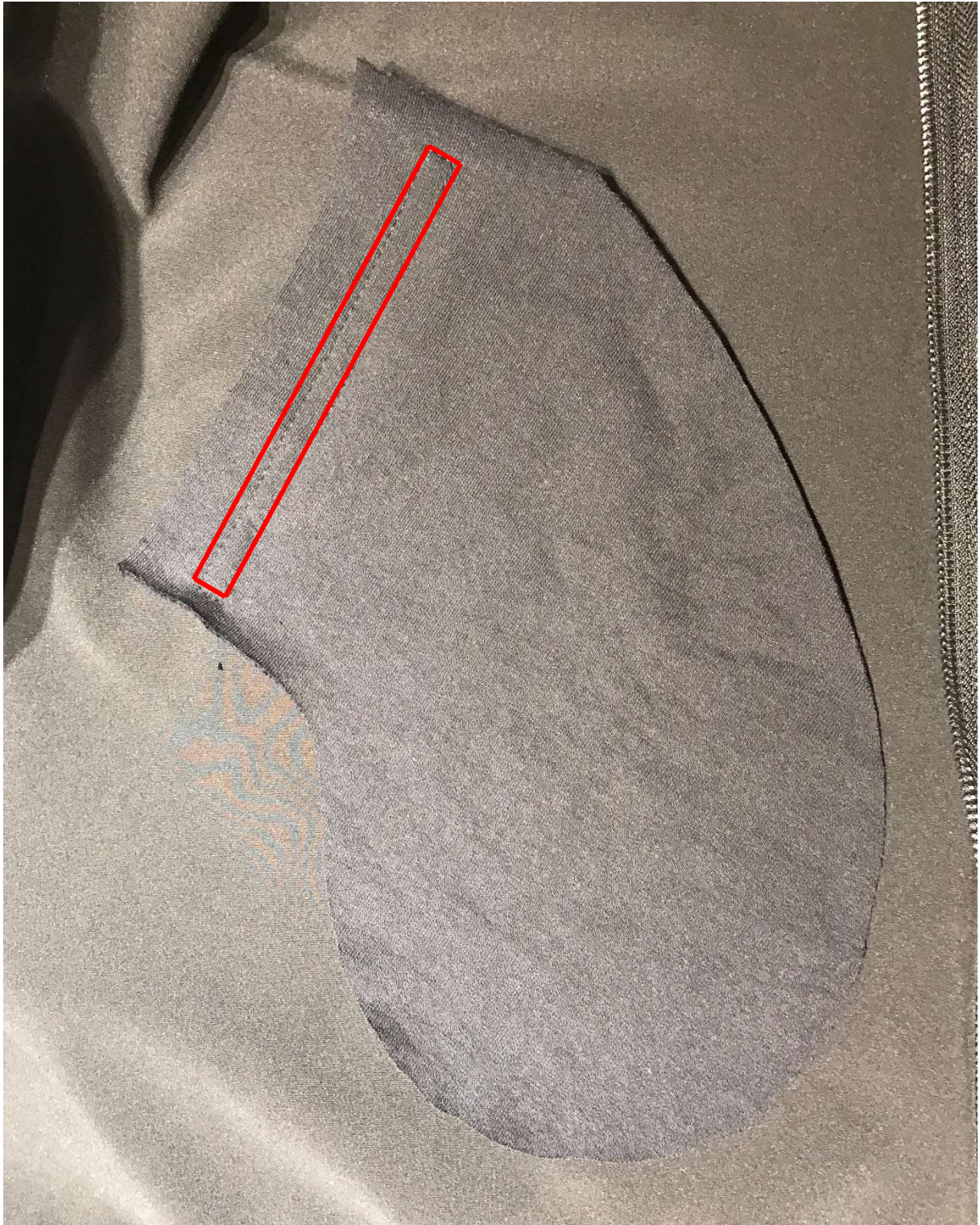
Put the strip with the folded edge against the hoodie/collar. Fit it to the beginning of the neckline. Straight stitch the same seam as the hoodie/collar.



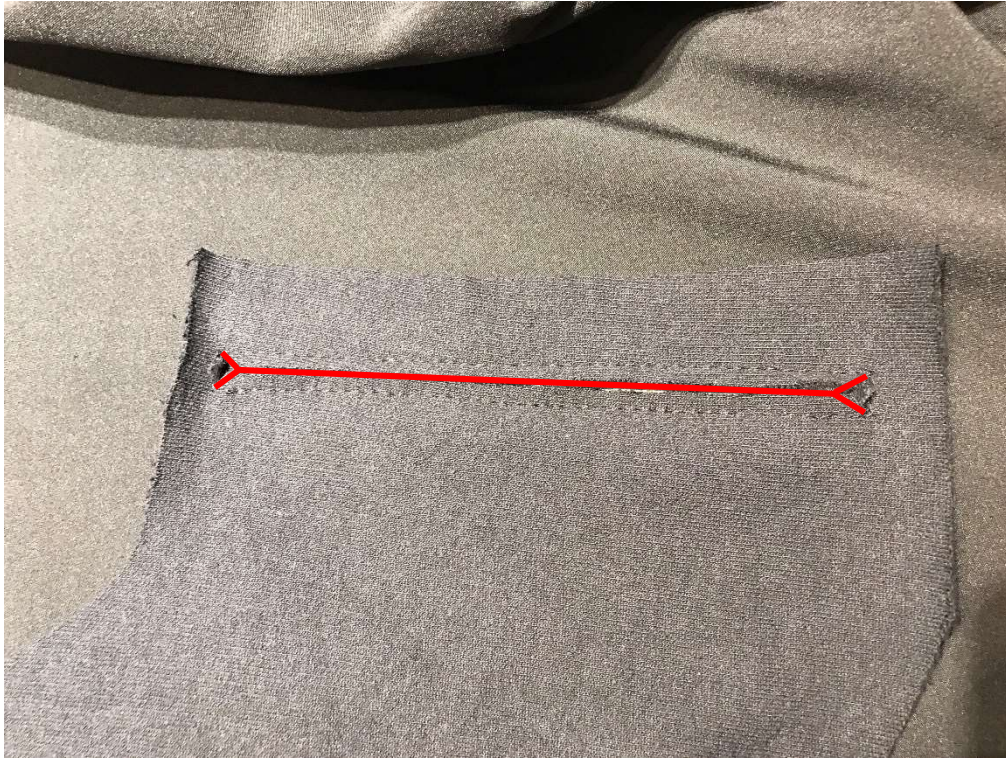
Fold down the strip towards the jacket and straight stitch the edge of the neckline strip.

Kangaroo pouch: Bind or hem the pocket openings. Place the kangaroo pouch on the front piece marking. Fold the edges for a cleaner look or leave the edge for a more raw impression. Stitch the bottom and top on the pouch.

pockets with lid



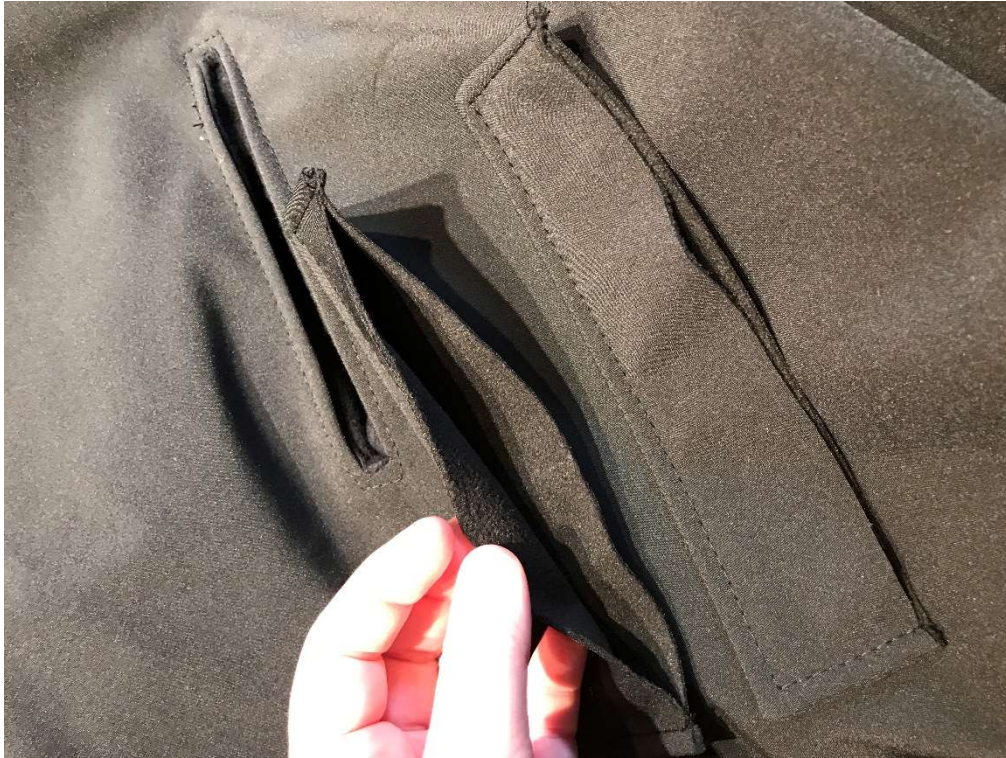
Add seam allowance and cut 4 pockets and the flaps on folded fabric. Draw the pocket opening on the front piece of the jacket. Put the wrong side of the pocket on the right side of the front piece and straight stitch around like a narrow rectangle.



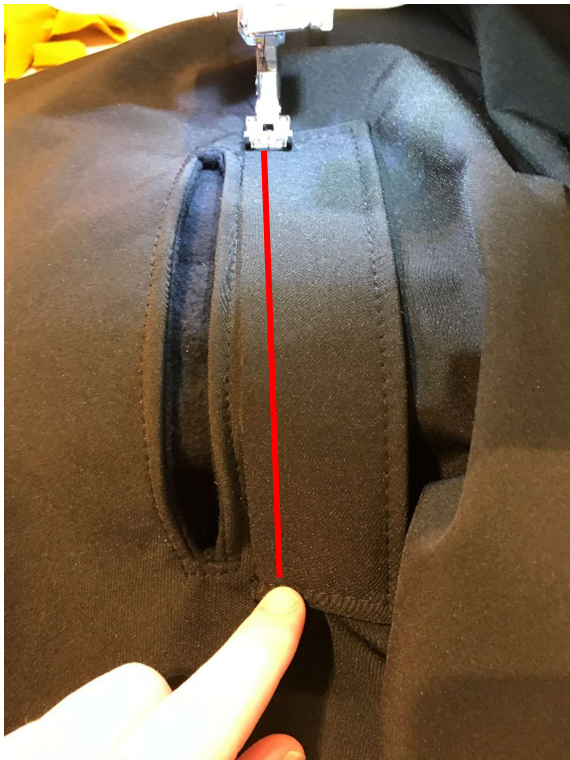
Cut open the pocket opening. Make sure to cut towards the corners.



Reverse the pocket to the inside and straight stitch around the opening. Put the other pocket on the right sides, at the pocket attached to the front piece and stitch around the edges.



Place the lids right sides and stitch three sides, leaving one long side open. Fold out and stitch around the edges with the presser foot on the edge.



Put the lid, turned from the opening, edge on edge with the seam around the pocket opening, on the wrong side of the front piece. Attach the lid with a straight stitch.



Fold the lid over the pocket opening and straight stitch over the first seam.



This is the finished look.

Hem the jacket.

Done!