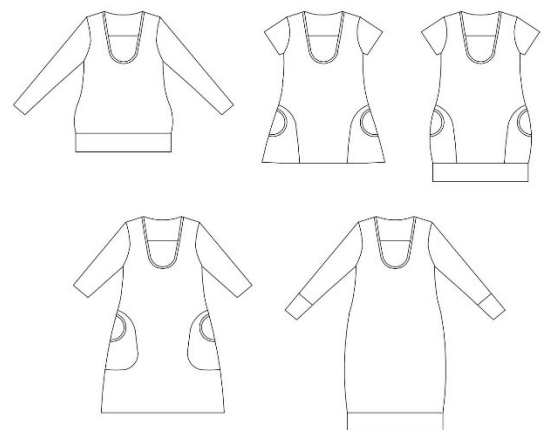


tutorial

liberty

eu size 32 – 60



This pattern has different variations. Top, tunic or dress. Short, 3/4 sleeves without cuffs and long sleeves with / without cuff. With or without pockets. It is breastfeeding friendly with an opening underneath the tank.

Seam allowance is not included. Add seam allowance for the hem.
The pattern is intended for stretchy fabric, eg jersey.



<https://sewingheartdesign.wordpress.com/>

information

SALES LICENSE

Included with the patterns is a sales license. That means that you as individual who sews as a hobby or owns a business have the right to use the patterns to sell clothes. The license applies only for the buyer of the pattern and the license terms cannot be transferred to a third party. Which means that you cannot let another physical or legal person produce clothes on a large scale on your behalf.

SEAM ALLOWANCE/HEM NOT INCLUDED

You should add seam allowance on ALL patterns except where you intend to add binding or if the patterns says otherwise. I recommend that you read through the sewing instructions. Within it are instructions both in picture and text which will facilitate your sewing.

PAPER PATTERN

The paper patterns are sensitive to moisture and tear. Handle with care. On certain paper patterns the parts are split due to lack of space. Read the instructions carefully to know if they are to be stenciled and put together in a certain way. When you sell your pattern, you must destroy all copies that you have made.

PDF-PATTERN

Files are downloaded directly from your page on Etsy – after purchase they will be added to “purchases”. They are PDF-files and I recommend a pdf-reader with a setting to switch to “real size” and “automatic portrait/landscape” when printing. For example, Adobe Reader or PDF X-change. It is important to measure the control box so that it is exactly 30mm * 30mm or your garment might not end up the way you imagine. PDF is easy to print. Utilize the layers to only print the page you want to sew and cut it directly. There are arrows on the pattern and they should align towards each other when you put the pattern together. There is also an overview of the pattern where you can see how the different pages should be positioned.

Because a PDF-pattern is a digital product there are no refunds or returns.

The PDF-Pattern may not be copied and/or sold/donated to a third party.

LICENSE

When you purchase a pattern, you agree to an agreement with Sewingheartdesign that you accept the license with its terms and conditions. Violation of this agreement will be brought before the Swedish court.

I hope you will be satisfied with the pattern! Good luck with the sewing!

/Marie Sidén

Sewingheartdesign

fabric requirement

Fabric required is calculated with pre-washed fabric, 160 cm with, seam allowance included (1 cm) and hem (3 cm)

BODY LENGTH: 150/170/190 cm

LOOSE PARTS

SIZE	TOP	TUNIC	DRESS
32-44 (a)	65/70/70 cm	80/85/90 cm	100/105/110 cm
(a LÄGG TILL ÄRM/ADD SLEEVE			
46-60 (b)	140/145/150 cm	170/175/180 cm	200/210/220 cm
(b ÄRM RYMS BREVID/SLEEVE FITS BESIDE			

SLEEVE	SHORT	LONG W CUFFS	LONG
32-44	20 cm	50/55/60 cm	60/65/70 cm
46-60	25 cm	55/60/65 cm	60/65/70 cm

TANK

SIZE
32-60 30 cm

POCKETS IN OTHER FABRICS

32-60 30 cm

pages

SEAM ALLOWANCE IS NOT INCLUDED. ADD SEAM/HEM ALLOWANCE.

The pattern is intended for stretchy fabric, eg jersey.

Choose your body length on the pattern.

Remove about 5cm if it should be a 3/4 sleeve without cuff.

TUTORIAL	p 4
CUFFS	p 10
WAIST BAND	p 11

tutorial

SEAM ALLOWANCE IS NOT INCLUDED. ADD SEAM/HEM ALLOWANCE.

The pattern is intended for stretchy fabric, eg jersey.

Choose your body length on the pattern.

Remove about 5cm if it should be a 3/4 sleeve without cuff.



Cut out all the parts.



Stitch the shoulders.



Bind the pocket openings.



Glue/pin pocket right sides to the front piece wrong side.



Sew the pocket with decorative / cover stitch.



Hem/bind upper and lower edge of the breastfeeding front piece.



Add the tank with the right side against the front piece wrong side and pin / glue the sides.

Cut a small jack (or otherwise mark) on the front of the sleeve cap, and the middle of the sleeve cap. Align the marks on the front piece and mark the center of the shoulder. Stitch the sleeve.



Stitch the side seams.

cuffs



Fold the knit right sides together, according to the grainline and sew the edge. Fold it double with the seam inwards. Place it inside the sleeve, right sides together, and sew.

waist band



Pin/glue the front pieces overlap. Fold the band double with the seam inward. Place it inside the shirt, right sides together, and sew.



Done!