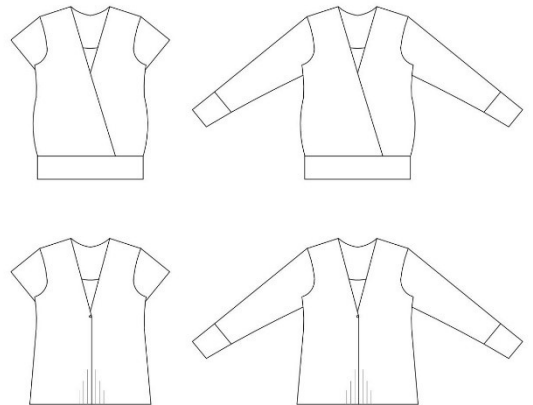


tutorial

hidden freedom

eu size 32 - 60



This pattern has different variations. It is possible to make short sleeves, 3/4 sleeve with mud or long sleeve without mud. Choose the length of the garment after how long you are. The shirt can also be made without waist band at the waist and can be closed with a button at the neckline.

Seam allowance is not included.



sewingheartdesign

<https://sewingheartdesign.wordpress.com/>

information

SALES LICENSE

Included with the patterns is a sales license. That means that you as individual who sews as a hobby or owns a business have the right to use the patterns to sell clothes. The license applies only for the buyer of the pattern and the license terms cannot be transferred to a third party. Which means that you cannot let another physical or legal person produce clothes on a large scale on your behalf.

SEAM ALLOWANCE/HEM NOT INCLUDED

You should add seam allowance on ALL patterns except where you intend to add binding or if the patterns says otherwise. I recommend that you read through the sewing instructions. Within it are instructions both in picture and text which will facilitate your sewing.

PAPER PATTERN

The paper patterns are sensitive to moisture and tear. Handle with care. On certain paper patterns the parts are split due to lack of space. Read the instructions carefully to know if they are to be stenciled and put together in a certain way. When you sell your pattern, you must destroy all copies that you have made.

PDF-PATTERN

Files are downloaded directly from your page on Etsy – after purchase they will be added to “purchases”. They are PDF-files and I recommend a pdf-reader with a setting to switch to “real size” and “automatic portrait/landscape” when printing. For example, Adobe Reader or PDF X-change. It is important to measure the control box so that it is exactly 30mm * 30mm or your garment might not end up the way you imagine. PDF is easy to print. Utilize the layers to only print the page you want to sew and cut it directly. There are arrows on the pattern and they should align towards each other when you put the pattern together. There is also an overview of the pattern where you can see how the different pages should be positioned.

Because a PDF-pattern is a digital product there are no refunds or returns.

The PDF-Pattern may not be copied and/or sold/donated to a third party.

LICENSE

When you purchase a pattern, you agree to an agreement with Sewingheartdesign that you accept the license with its terms and conditions. Violation of this agreement will be brought before the Swedish court.

I hope you will be satisfied with the pattern! Good luck with the sewing!

/Marie Sidén

Sewingheartdesign

fabric requirement

Fabric required is calculated with pre-washed fabric, 160 cm with, seam allowance included (1 cm) and hem (3 cm)

BODY LENGTH	150/170/190 cm
-------------	----------------

SIZE	SHORT	LONG
32-60	120/125/130 cm	130/140/150 cm

SIZE	TANK, SHORT	TANK, LONG
32-60	50/55/60 cm	55/60/65 cm

KNIT BINDING, HEIGHT 30 cm

SIZE	WIDTH
32-34	120 cm
36-40	135 cm
42-44	150 cm
46-50	165 cm
52-54	180 cm
56-60	195 cm

pages

SEAM/HEM ALLOWANCE NOT INCLUDED.

Choose your body length on the pattern.

BREAST FEEDING TANK WITH WAIST BAND	p 5
CUFFS	p 8
WAIST BAND	p 9
PLAIN SHIRT/JACKET WITHOUT WAIST BAND	p 11
CUFFS	p 13



Cut all parts. Add seam allowance on the areas to be sewn together. Add to the collar around the neck opening, towards the top of the lining, the side of the lining and the bottom of the lining. If you choose to edge, no additional seam allowance is required.

Select the length of the sleeve, short sleeve, long sleeve with / without cuff.

Choose the length of the garment after your body length.

The shirt can also be done without waistband and can be closed with a button at the neckline.

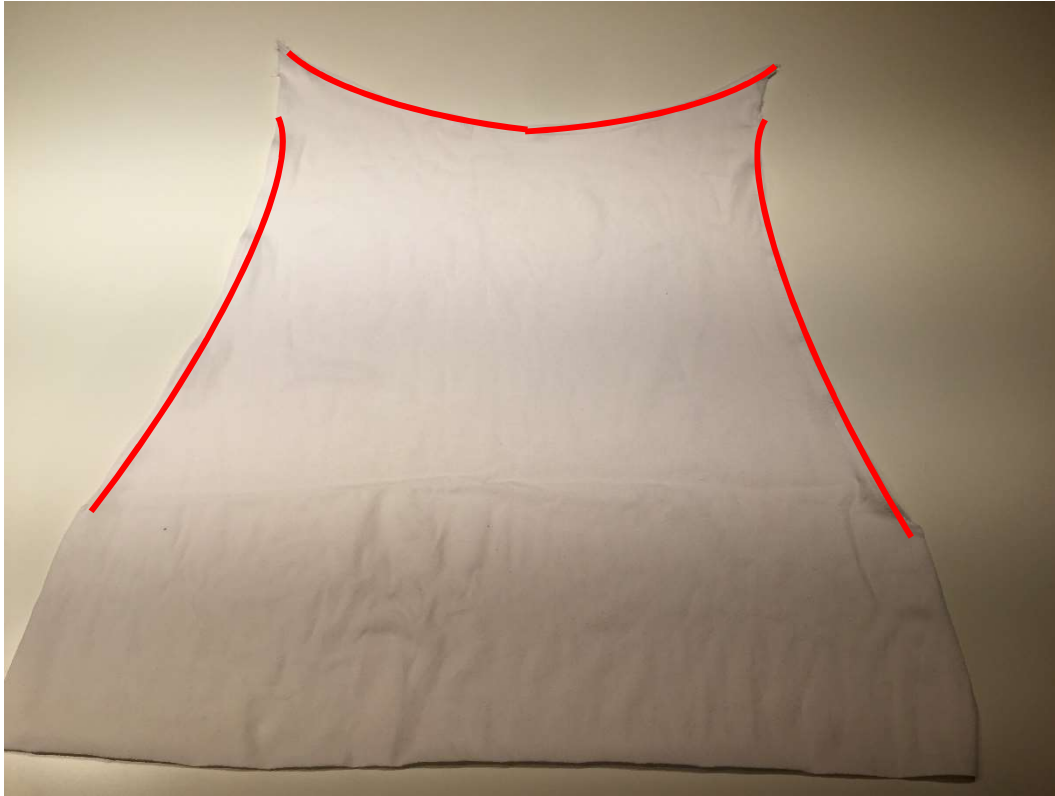
breastfeeding tank with waistband



Stitch the shoulders.



Fold / bind the opening on the front pieces and the neck.



Breastfeeding tank: Fold or bind the neckline on the tank and at the side between the markings, as the red lines in the image.



Add tank with the right side against the front piece wrong side. Pin/glue the linen on the front piece armholes, about 2-3cm by the edge and down the side. Leave open according to the markings.



Cut a small jack (or otherwise mark) on the front of the sleeve cap, and the middle of the sleeve cap. Align the marks on the front piece and mark the center of the shoulder. Stitch the sleeve.



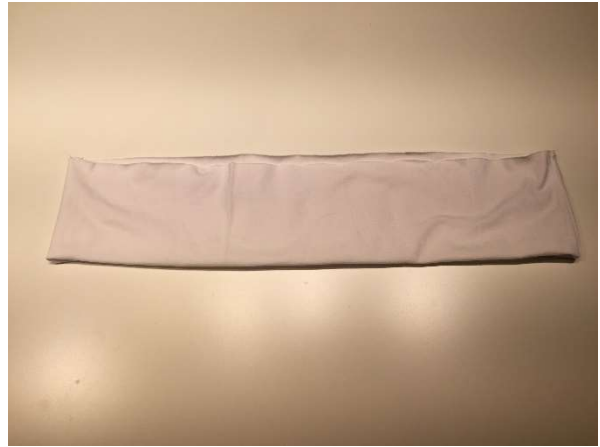
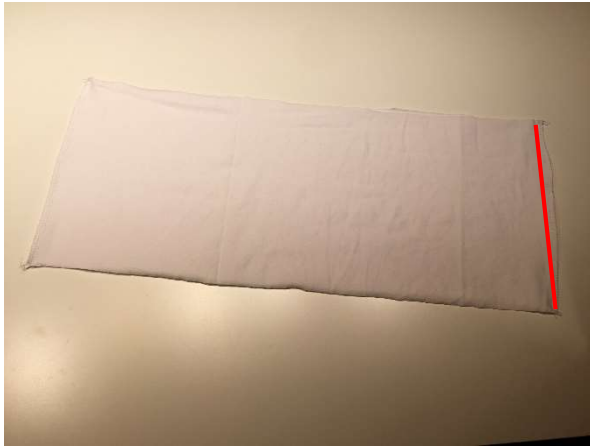
Stitch the side seams together. Breastfeeding tank should only be sewn according to the red lines.

cuffs



Fold the knit right sides together, according to the grainline and sew the edge. Fold it double with the seam inwards. Place it inside the sleeve, right sides together, and sew.

waist band



Pin/glue the front pieces overlap. Fold the band double with the seam inward. Place it inside the shirt, right sides together, and sew.



Long sleeves without cuffs or short sleeves hemmed.



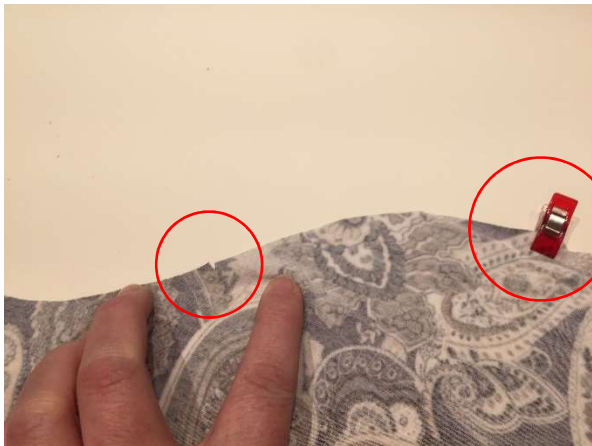
Done!

plain shirt/cardigan without waist band



Sew the shoulders together.

Fold / bind the opening on the front pieces and the neck. Fold or edge the lining on the tank. Add tank with the right side facing the front piece wrong side and pin/glue around the armhole.



Cut a small jack (or otherwise mark) on the front ärmkullens selection, and the middle of the sleeve cap. Align the marks on the front piece and mark the center of the shoulder. Sew sleeve.

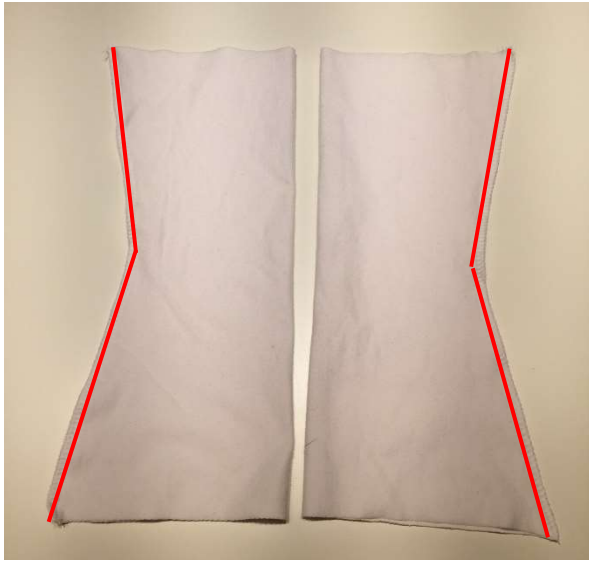


Hem the bottom of the tank top and cardigan before the seams are sewn.



Stitch the side seams.

cuffs



Fold the knit right sides together, according to the grainline and sew the edge. Fold it double with the seam inwards. Place it inside the sleeve, right sides together, and sew.



Long sleeves without cuffs or short sleeves hemmed.



Done!