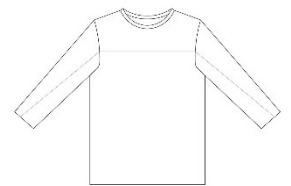
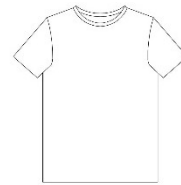


tutorial

mister good looking tee

eu size XS – 6XL



This pattern comes with many variations.
Short or long sleeves. Hem, knit bind or cuff.
Neckline or v-neck.

Seam allowance is not included.



sewingheartdesign

<https://sewingheartdesign.wordpress.com/>

information

SALES LICENSE

Included with the patterns is a sales license. That means that you as individual who sews as a hobby or owns a business have the right to use the patterns to sell clothes. The license applies only for the buyer of the pattern and the license terms cannot be transferred to a third party. Which means that you cannot let another physical or legal person produce clothes on a large scale on your behalf.

SEAM ALLOWANCE/HEM NOT INCLUDED

You should add seam allowance on ALL patterns except where you intend to add binding or if the patterns says otherwise. I recommend that you read through the sewing instructions. Within it are instructions both in picture and text which will facilitate your sewing.

PAPER PATTERN

The paper patterns are sensitive to moisture and tear. Handle with care. On certain paper patterns the parts are split due to lack of space. Read the instructions carefully to know if they are to be stenciled and put together in a certain way. When you sell your pattern, you must destroy all copies that you have made.

PDF-PATTERN

Files are downloaded directly from your page on Etsy – after purchase they will be added to “purchases”. They are PDF-files and I recommend a pdf-reader with a setting to switch to “real size” and “automatic portrait/landscape” when printing. For example, Adobe Reader or PDF X-change. It is important to measure the control box so that it is exactly 30mm * 30mm or your garment might not end up the way you imagine. PDF is easy to print. Utilize the layers to only print the page you want to sew and cut it directly. There are arrows on the pattern and they should align towards each other when you put the pattern together. There is also an overview of the pattern where you can see how the different pages should be positioned.

Because a PDF-pattern is a digital product there are no refunds or returns.

The PDF-Pattern may not be copied and/or sold/donated to a third party.

LICENSE

When you purchase a pattern, you agree to an agreement with Sewingheartdesign that you accept the license with its terms and conditions. Violation of this agreement will be brought before the Swedish court.

I hope you will be satisfied with the pattern! Good luck with the sewing!

/Marie Sidén

Sewingheartdesign

fabric requirement

Fabric required is calculated with pre-washed fabric, 160 cm with, seam allowance included (1 cm) and hem (3 cm)

<u>Mister Good Looking:</u>	<u>XS</u>	<u>M</u>	<u>XL</u>	<u>2XL</u>	<u>4XL</u>	<u>6XL</u>
Sweater, short sleeve	75	80	110	115	120	125/185*
Sweater, long sleeve	145	150	155	160	165	175/185*



Cut out all pieces you're planning to use. Mark the front and back (marked with a red pin on the picture).



Two-colored. Stitch the front and back. Stitch the sleeve pieces.



Hem/bind: Stitch one shoulder. Hem the neckline. Stitch the other shoulder.
Cuff: Stitch both shoulder seams.



Pin the sleeve against the armhole and make sure that the seams meet inside. Attach the sleeves.
Binding: Bind the sleeve.



Stitch the side seams.



Hem the sweater.

Hem or cuff the sleeves if you haven't chosen to use binding.

All done!

Binding: Finish all the knit binding with a straight stitch along the seam, towards the edge. Cut one binding off, fold over and sew another straight stitch to keep it on place. Cut off the margin.
Done!