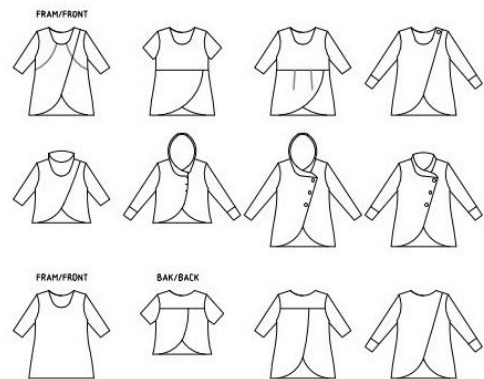


# tutorial

## ladybug

eu size 32 - 60



This pattern has many different variations. Top, tunic or long tunic. Pockets, hood or collars. Opening in the front or at the back. Short sleeves, 3/4 sleeve, long sleeves with/without cuffs. Choose the length of the garment after your body length. Breast feeding tank optional.

Seam allowance is not included.



sewingheartdesign

<https://sewingheartdesign.wordpress.com/>

# information

## **SALES LICENSE**

Included with the patterns is a sales license. That means that you as individual who sews as a hobby or owns a business have the right to use the patterns to sell clothes. The license applies only for the buyer of the pattern and the license terms cannot be transferred to a third party. Which means that you cannot let another physical or legal person produce clothes on a large scale on your behalf.

## **SEAM ALLOWANCE/HEM NOT INCLUDED**

You should add seam allowance on ALL patterns except where you intend to add binding or if the patterns says otherwise. I recommend that you read through the tutorial. Within it are instructions both in picture and text which will facilitate your sewing.

## **PAPER PATTERN**

The paper patterns are sensitive to moisture and tear. Handle with care. On certain paper patterns the parts are split due to lack of space. Read the instructions carefully to know if they are to be stenciled and put together in a certain way.

## **PDF-PATTERN**

Files are downloaded directly from your page on Etsy – after purchase they will be added to “purchases”. They are PDF-files and I recommend a pdf-reader with a setting to switch to “real size” and “automatic portrait/landscape” when printing. For example, Adobe Reader or PDF X-change. It is important to measure the control box so that it is exactly 30mm \* 30mm or your garment might not end up the way you imagine. PDF is easy to print. Utilize the layers to only print the page you want to sew and cut it directly. There are arrows on the pattern and they should align towards each other when you put the pattern together. There is also an overview of the pattern where you can see how the different pages should be positioned.

Because a PDF-pattern is a digital product there are no refunds or returns.

[The PDF-Pattern may not be copied and/or sold/donated to a third party.](#)

## **LICENSE**

When you purchase a pattern, you agree to an agreement with Sewingheartdesign that you accept the license with its terms and conditions. Violation of this agreement will be brought before the Swedish court.

I hope you will be satisfied with the pattern! Good luck with the sewing!

/Marie Sidén

Sewingheartdesign

# fabric requirement

Fabric usage is calculated on washed/shrunk fabric 160cm wide, including seam allowance (1cm) and hem (3cm).

BODY LENGTH 150/170/190 cm

## **FINISHED GARMENTS**

### **TOP, SHORT SLEEVE**

32-60 165/175/185 cm

### **TUNIC, 3/4 QUARTER SLEEVE**

32-60 210/225/235 cm

### **TUNIC, LONG SLEEVE, BREAST FEEDING TANK**

32-60 290/310/330 cm

## **LOOSE PARTS:**

## **ADD THE PARTS YOU WILL USE**

SIZE	TOP	TUNIC
32-60	140/150/160 cm	160/170/180 cm

### **SLEEVE**

SIZE	SHORT	3/4 QUARTERS	LONG W CUFFS	LONG SLEEVE
32-60	25 cm	50/55/55	55/60/65	65/70/75 cm

### **BREAST FEEDING TANK**

SIZE	TOP	TUNIC
32-60	55/60/65	65/70/75 cm

### **WRAP TOP (FOR EG TWO COLORS)**

SIZE	SHORT TOP PART	TOP	TUNIC
32-60	20 cm	120/130/140 cm	140/150/160 cm

### **DIVIDED STRAIGHT/PLEATED**

SIZE	LOWER FRONT PIECE	UPPER FRONT PIECE
32-54	50 cm	35/40/45 cm
56-60	50 cm	70/80/90 cm

SEAM/HEM ALLOWANCE NOT INCLUDED.

Choose your body length on the pattern.

ADD HEM ALLOWANCE. Add seam allowance on the areas to be sewn together.

Add hem allowance around the neck opening, the linen's top side, breast feeding tank side and at the bottom of it. If you choose to edge, no additional seam allowance is required.

BREAST FEEDING TANK	p 4
POCKETS	p 5
BREAST FEEDING TANK	p 7
SLEEVE	p 9
SLEEVE WITH RIBBON	p 10
COLLAR	p 13
LONG SLEEVE WITH CUFFS	p 14
WRAP	p 16
SMALL SLEEVE CUFF	p 23

# breast feeding tank

SEAM/HEM ALLOWANCE NOT INCLUDED.



Cut out all the parts.

Choose your body length on the pattern.

ADD HEM ALLOWANCE. Add seam allowance on the areas to be sewn together.

Add hem allowance around the neck opening, the linen's top side, breast feeding tank side and at the bottom of it. If you choose to edge, no additional seam allowance is required.

# pockets



Bind the pocket openings.



Put the front piece with wrong side up. Glue or pin the pockets and place the pockets on edge on both sides. Attach the pockets with a decorative stitch.





Hem the bottom of the back piece.



Hem around the opening of the front pieces.

# breast feeding tank



Fold or bind the neckline on the tank and at the side between the markings, as the red lines in the image.



Hem the bottom of the tank.





Place the back piece with the right side up. Place the front pieces on top, right sides together with the back piece. Place the tank on top of them all with the right side down.



Stitch the shoulders.

# sleeve



Make a notch on sleeves and outer pieces according to the markings in your pattern. (Front markings and the middle of the shoulder.) Match markings on the sleeve with markings on the outer piece.



Sew together.

# sleeve with ribbon



Cut two pieces, apx 6x10cm.



Stitch the edge. Turn right.





Stitch the ribbon when hemming the sleeve. Fold the ribbon to the right side and attach a button.



Sew side seams together.



# collar



It may be easier to sew all layers if you first sew them together.



Add the collar folded inside the neckline, start pinning center back. Sew around.

# long sleeve with cuffs



Fold the knit right sides together, according to the grainline and sew the edge.



Fold it double with the seam inwards. Place it inside the sleeve, right sides together, and sew.





Done!

# wrap

SEAM/HEM ALLOWANCE NOT INCLUDED.

Choose your body length on the pattern.

ADD HEM ALLOWANCE. Add seam allowance on the areas to be sewn together. Add hem allowance around the neck opening, the linen's top side, breast feeding tank side and at the bottom of it. If you choose to edge, no additional seam allowance is required.



Cut the parts





Sew the parts of the back piece (or parts of the front if you have chosen the opening back).





Add up the pieces right sides together with the back piece. Sew together at the bottom of the sides.



Hem all around the outer edge.

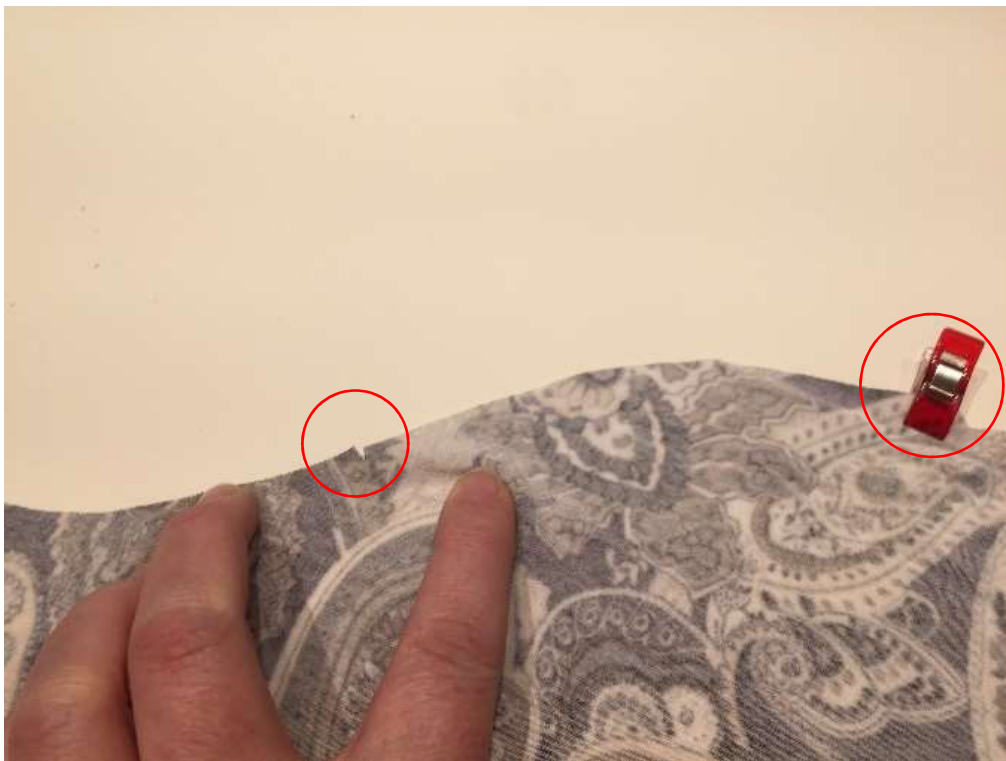


Add up the piece in parts overlap and fit on top. Sew together.





Stitch the shoulders.



Cut a small jack (or otherwise mark) on the front ärmkullens selection, and the middle of the sleeve cap. Align the marks on the front piece and mark the center of the shoulder.



Sew sleeve.



Stitch the side seams.

# small sleeve cuff



Fold the knit right sides together, according to the grainline and sew the edge. Fold it double with the seam inwards.



Place it inside the sleeve, right sides together, and sew.





Done!