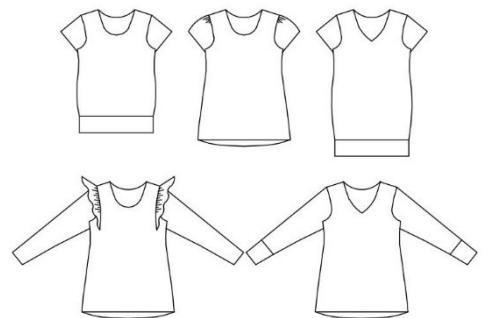


tutorial

sporty monday

eu size 32 - 60



This pattern has several different varieties to choose from. There're two length options, regular length and tunic length. There are four sleeve options: short, long with or without cuffs. The neckline can be done either round or V-shaped.

Seam allowance is not included.



sewingheartdesign

<https://sewingheartdesign.wordpress.com/>

information

SALES LICENSE

Included with the patterns is a sales license. That means that you as individual who sews as a hobby or owns a business have the right to use the patterns to sell clothes. The license applies only for the buyer of the pattern and the license terms cannot be transferred to a third party. Which means that you cannot let another physical or legal person produce clothes on a large scale on your behalf.

SEAM ALLOWANCE/HEM NOT INCLUDED

You should add seam allowance on ALL patterns except where you intend to add binding or if the patterns says otherwise. I recommend that you read through the sewing instructions. Within it are instructions both in picture and text which will facilitate your sewing.

PAPER PATTERN

The paper patterns are sensitive to moisture and tear. Handle with care. On certain paper patterns the parts are split due to lack of space. Read the instructions carefully to know if they are to be stenciled and put together in a certain way. When you sell your pattern, you must destroy all copies that you have made.

PDF-PATTERN

Files are downloaded directly from your page on Etsy – after purchase they will be added to “purchases”. They are PDF-files and I recommend a pdf-reader with a setting to switch to “real size” and “automatic portrait/landscape” when printing. For example, Adobe Reader or PDF X-change. It is important to measure the control box so that it is exactly 30mm * 30mm or your garment might not end up the way you imagine. PDF is easy to print. Utilize the layers to only print the page you want to sew and cut it directly. There are arrows on the pattern and they should align towards each other when you put the pattern together. There is also an overview of the pattern where you can see how the different pages should be positioned.

Because a PDF-pattern is a digital product there are no refunds or returns.

The PDF-Pattern may not be copied and/or sold/donated to a third party.

LICENSE

When you purchase a pattern, you agree to an agreement with Sewingheartdesign that you accept the license with its terms and conditions. Violation of this agreement will be brought before the Swedish court.

I hope you will be satisfied with the pattern! Good luck with the sewing!

/Marie Sidén

Sewingheartdesign

fabric required

Fabric usage is calculated on washed / shrunk fabric 160cm wide, including seam (1cm) and hem (3cm).

BODY LENGTH 150/170/190 cm

SIZE	TOP	TUNIC
32-44	65/70/70 cm	85 cm
46-56	70/70/75 cm	90 cm
58-60	140/140/150 cm	190 cm

SLEEVES	SHORT/SHORT PUFF	LONG W CUFFS	LONG WITHOUT CUFFS
32-44	20/25 cm	50/55/55 cm	60/65/70 cm
46-56	25/30 cm	55/55/60 cm	60/65/70 cm
58-60	25/30 cm	55/60/60 cm	65/70/75 cm

KNIT	WAIST CUFF	SLEEVE CUFFS
32-44	100x25 cm	50x25 cm
46-56	125x25 cm	55x30 cm
58-60	135x25 cm	60x30 cm

WING SLEEVE +10cm FOR ALL SIZES

pages

SEAM/HEM ALLOWANCE NOT INCLUDED.

Choose your body length on the pattern.

REGULAR SLEEVE p 4

WING SLEEVE p 7

regular sleeve



Cut the pieces for the model you have chosen.



Hemming the neck: Sew both shoulders together.

Edging the neck: Sew one of the shoulders together. Sew the seam binding along the neckline. Sew the other shoulder together.

Sew sleeves to the bodypart.

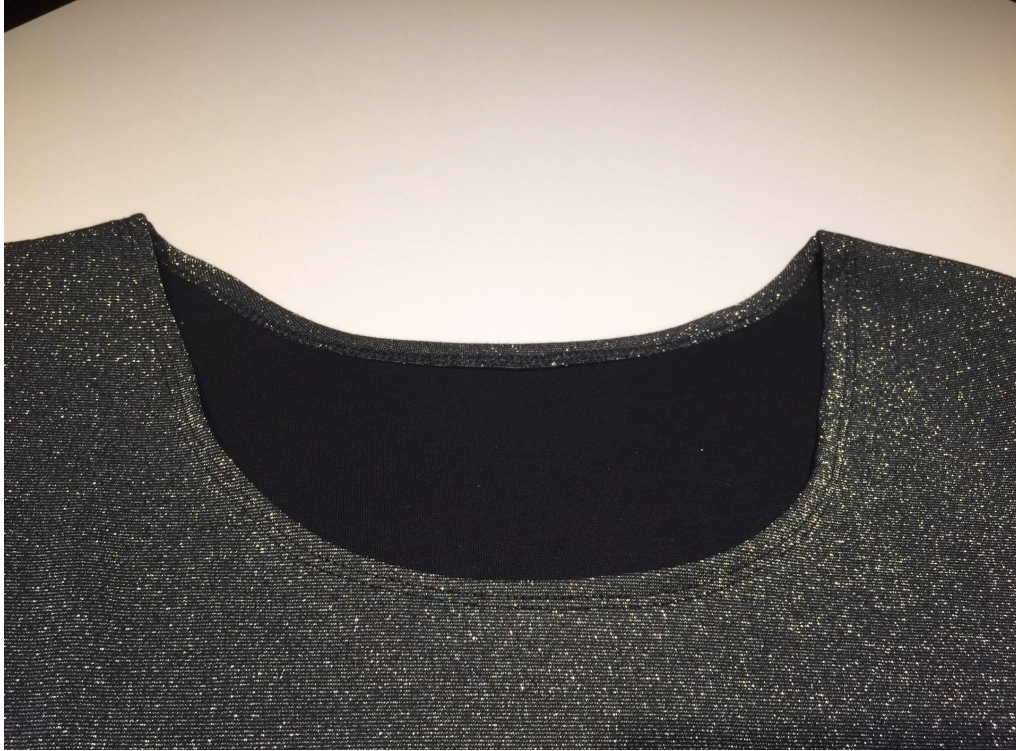


Sew side seams together.

Cuffs: Fold cuffs along the grain of fabric (short sides together, right sides in) and sew the edges together. Fold it double (right sides out) and place it inside the sleeve opening (right sides together) and sew together.



Hem the lower edge.



Hemming: Hem neck and sleeves. Done!

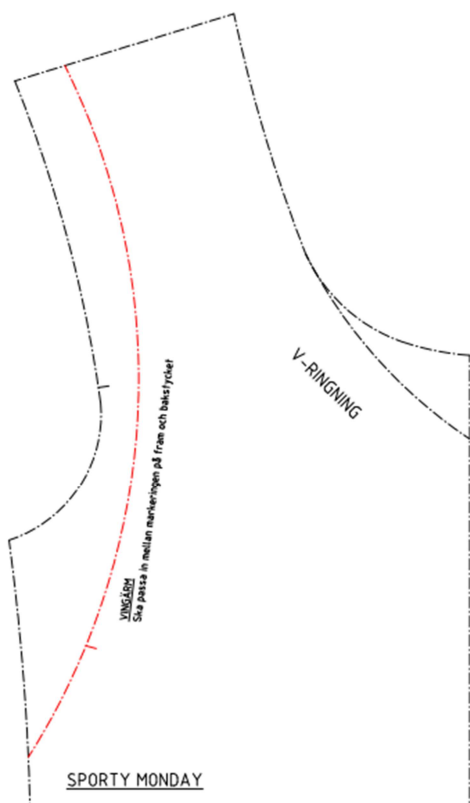
Edging: Finish all seam bindings by sewing a straight seam across it. Cut one of the edges near the fabric and fold the uncut edge over the short one. Sew a straight seam to bond the edge to the fabric. Cut off excess seam binding.



Done!

wing sleeve





Cut your pattern along the red line. Please add seam allowance.
A narrow hem on the wing sleeve is included in the pattern.



Cut the pieces you need for the model you have chosen.



Sew both shoulders together. Hem or sew ribbing along neckline.

Sew outer shoulder pieces together.

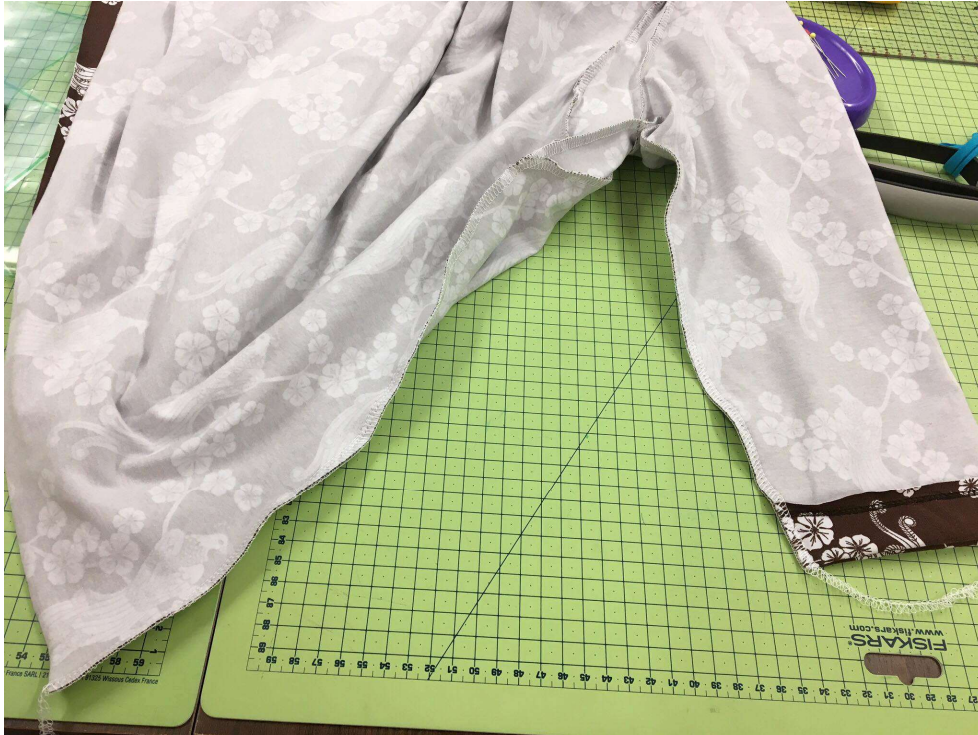




Place the wing sleeves right sides together with the front piece. Adjust the sleeve to fit between your markings on the front piece. Place the outer shoulder piece on top of the wing sleeve (face to face with the front piece). Sew all together.



Make a notch on sleeves and outer pieces according to the markings in your pattern. (Front markings and the middle of the shoulder.) Match markings on the sleeve with markings on the outer piece. Sew together.



Sew side seams together.



Hem or bind neck and sleeves.

Done!