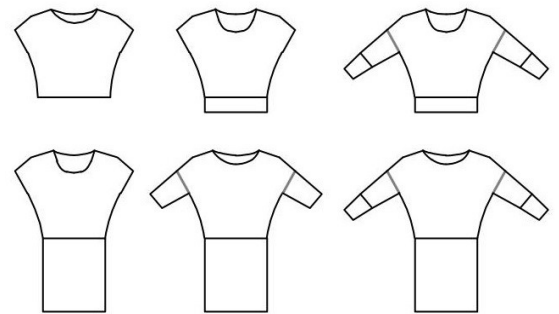


tutorial

go with the flow

eu size 32 – 60



This pattern has many different variations. It can be made with either a rounded neckline or with a boat neck. You can choose between making it without sleeves or with sleeves with or without cuffs. You can either hem the bottom, add a waistband or a skirt.

Seam allowance is not included.



sewingheartdesign

<https://sewingheartdesign.wordpress.com/>

information

SALES LICENSE

Included with the patterns is a sales license. That means that you as individual who sews as a hobby or owns a business have the right to use the patterns to sell clothes. The license applies only for the buyer of the pattern and the license terms cannot be transferred to a third party. Which means that you cannot let another physical or legal person produce clothes on a large scale on your behalf.

SEAM ALLOWANCE/HEM NOT INCLUDED

You should add seam allowance on ALL patterns except where you intend to add binding or if the patterns says otherwise. I recommend that you read through the sewing instructions. Within it are instructions both in picture and text which will facilitate your sewing.

PAPER PATTERN

The paper patterns are sensitive to moisture and tear. Handle with care. On certain paper patterns the parts are split due to lack of space. Read the instructions carefully to know if they are to be stenciled and put together in a certain way. When you sell your pattern, you must destroy all copies that you have made.

PDF-PATTERN

Files are downloaded directly from your page on Etsy – after purchase they will be added to “purchases”. They are PDF-files and I recommend a pdf-reader with a setting to switch to “real size” and “automatic portrait/landscape” when printing. For example, Adobe Reader or PDF X-change. It is important to measure the control box so that it is exactly 30mm * 30mm or your garment might not end up the way you imagine. PDF is easy to print. Utilize the layers to only print the page you want to sew and cut it directly. There are arrows on the pattern and they should align towards each other when you put the pattern together. There is also an overview of the pattern where you can see how the different pages should be positioned.

Because a PDF-pattern is a digital product there are no refunds or returns.

The PDF-Pattern may not be copied and/or sold/donated to a third party.

LICENSE

When you purchase a pattern, you agree to an agreement with Sewingheartdesign that you accept the license with its terms and conditions. Violation of this agreement will be brought before the Swedish court.

I hope you will be satisfied with the pattern! Good luck with the sewing!

/Marie Sidén

Sewingheartdesign

fabric requirements

The fabric requirements for this pattern is all in cm based on a 160 cm wide fabric. It is calculated on a pre-washed and pre-shrunk fabric. All measurements are calculated with a 1 cm seam allowance and a 3 cm hem.

Go with the flow: 32 36 40 44 48 52 56 60

Top, long sleeves w cuffs, waistband

130 130 170 170 170 170 190 200

Dress, long sleeves w cuffs

190 190 230 230 230 230 260 260

pages

SEAM/HEM ALLOWANCE NOT INCLUDED.

Choose your body length on the pattern.

TOP p 4

DRESS p 9

top

SEAM ALLOWANCE/HEM NOT INCLUDED.

Choose your body length on the pattern.



Cut out all the parts, don't forget to add your desired seam allowance.

On the top the sleeve and the top are cut out in one piece, you can also cut them out separately.



Neck line with binding: Stitch one shoulder.

Hemmed neck line: Stitch both shoulders.



Neck line with binding: Sew the binding, After the binding is finished stitch the second shoulder seam, end the seam just before the binding, finish off the binding. (If you are unsure about how to do this there are many great tutorials on the internet.)

Hemmed neck line: Hem the neckline



If you picked the separate sleeve now is the time to attach it to the top.

With right sides together, align front and back at bottom hem, armpit and sleeve at hem. Stitch the side seams.



Waistband for the top

With right sides together, fold the waistband/skirt widthwise and stitch the shorter ends together, creating a large circle.

Fold the waistband/skirt lengthwise with wrong sides together



Attach the waistband/skirt to the bottom edge of the top.



Hem the sleeve.

Sleeve with cuff: Fold the fabric widthwise and stitch the shorter ends together to form a circle. Then fold the cuff lengthwise with wrong sides together and attach it to the bottom edge of the sleeve.



Top

Done!

dress

SEAM ALLOWANCE/HEM NOT INCLUDED.

Choose your body length on the pattern.



Cut out all the parts, don't forget to add your desired seam allowance.



Neck line with binding: Stitch one shoulder.

Hemmed neck line: Stitch both shoulders.



Neck line with binding: Sew the binding, After the binding is finished stitch the second shoulder seam, end the seam just before the binding, finish off the binding. (If you are unsure about how to do this there are many great tutorials on the internet.)

Hemmed neck line: Hem the neckline



If you picked the separate sleeve now is the time to attach it to the top.

With right sides together, align front and back at bottom hem, armpit and sleeve at hem. Stitch the side seams.



Skirt for the dress.

With right sides together, fold the waistband/skirt widthwise and stitch the shorter ends together, creating a large circle.

Fold the waistband/skirt lengthwise with wrong sides together



Attach the waistband/skirt to the bottom edge of the top.



Hem the sleeve.

Sleeve with cuff: Fold the fabric widthwise and stitch the shorter ends together to form a circle. Then fold the cuff lengthwise with wrong sides together and attach it to the bottom edge of the sleeve.



Dress

Done!