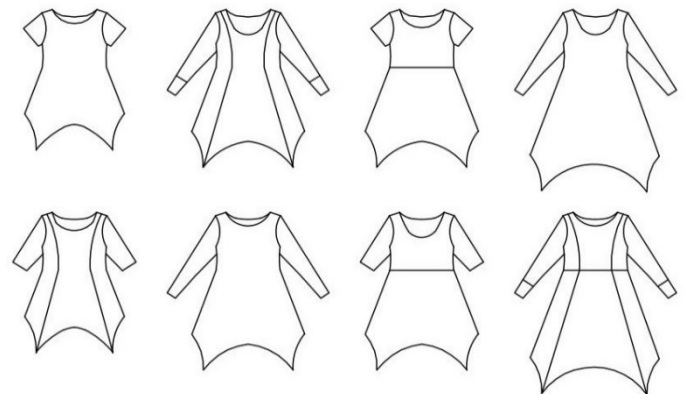


tutorial

midnight romance

eu size 32 - 60



This pattern comes with a large number of variations. You have 3 lengths to choose from, with or without pockets. Top, tunic or dress. The sleeve can be made short, $\frac{3}{4}$, long and with or without cuff. The neckline is wide, but with 3 different heights. You can divide the front and back piece or keep both in one piece. The pattern is compatible with the pattern Sunday Morning.

Seam or hem allowance is not included.



sewingheartdesign

<https://sewingheartdesign.wordpress.com/>

information

SALES LICENSE

Included with the patterns is a sales license. That means that you as individual who sews as a hobby or owns a business have the right to use the patterns to sell clothes. The license applies only for the buyer of the pattern and the license terms cannot be transferred to a third party. Which means that you cannot let another physical or legal person produce clothes on a large scale on your behalf.

SEAM ALLOWANCE/HEM NOT INCLUDED

You should add seam allowance on ALL patterns except where you intend to add binding or if the patterns says otherwise. I recommend that you read through the sewing instructions. Within it are instructions both in picture and text which will facilitate your sewing.

PAPER PATTERN

The paper patterns are sensitive to moisture and tear. Handle with care. On certain paper patterns the parts are split due to lack of space. Read the instructions carefully to know if they are to be stenciled and put together in a certain way. When you sell your pattern, you must destroy all copies that you have made.

PDF-PATTERN

Files are downloaded directly from your page on Etsy – after purchase they will be added to “purchases”. They are PDF-files and I recommend a pdf-reader with a setting to switch to “real size” and “automatic portrait/landscape” when printing. For example, Adobe Reader or PDF X-change. It is important to measure the control box so that it is exactly 30mm * 30mm or your garment might not end up the way you imagine. PDF is easy to print. Utilize the layers to only print the page you want to sew and cut it directly. There are arrows on the pattern and they should align towards each other when you put the pattern together. There is also an overview of the pattern where you can see how the different pages should be positioned.

Because a PDF-pattern is a digital product there are no refunds or returns.

The PDF-Pattern may not be copied and/or sold/donated to a third party.

LICENSE

When you purchase a pattern, you agree to an agreement with Sewingheartdesign that you accept the license with its terms and conditions. Violation of this agreement will be brought before the Swedish court.

I hope you will be satisfied with the pattern! Good luck with the sewing!

/Marie Sidén

Sewingheartdesign

fabric requirements

Fabric usage is calculated on washed/shrunk fabric 160cm wide, including seam allowance (1cm) and hem (3cm).

BODY LENGTH 150/170/190 cm

OBS! ADD LENGTH FOR SLEEVE OF YOUR CHOOSING

<u>SIZE</u>	<u>TOP</u>	<u>TUNIC</u>	<u>KNEELENGTH</u>
32-60	135/145/145	175/185/185	215/225/235

LOOSE PARTS

<u>SLEEVE</u>	<u>SHORT</u>	<u>3/4</u>	<u>WITH CUFFS</u>	<u>LONG</u>
32-60	20/25 cm	50/55/55 cm	55/55/60 cm	65/70/70 cm

ÖVERDEL

<u>SIZE</u>	
32-60	45 cm

SKIRT

<u>SIZE</u>	<u>TOP</u>	<u>TUNIC</u>	<u>KNEELENGTH</u>
32-60	45/50/50	65/70/70	85/90/95

POCKETS IN OTHER FABRICS

32-60	25/35 cm
-------	----------

KNIT BINDING

HEIGHT: 20 cm

<u>SIZE</u>	32	34	36	38	40	42	44	46	48	50	52	54	56	58	60
<u>WIDTH</u>	65	70	75	80	80	85	90	90	95	100	105	105	110	115	115cm

pages

SEAM/HEM ALLOWANCE NOT INCLUDED.

Choose your body length on the pattern.

TUTORIAL	s 4
POCKETS	s 10
KNIT BINDING	s 12

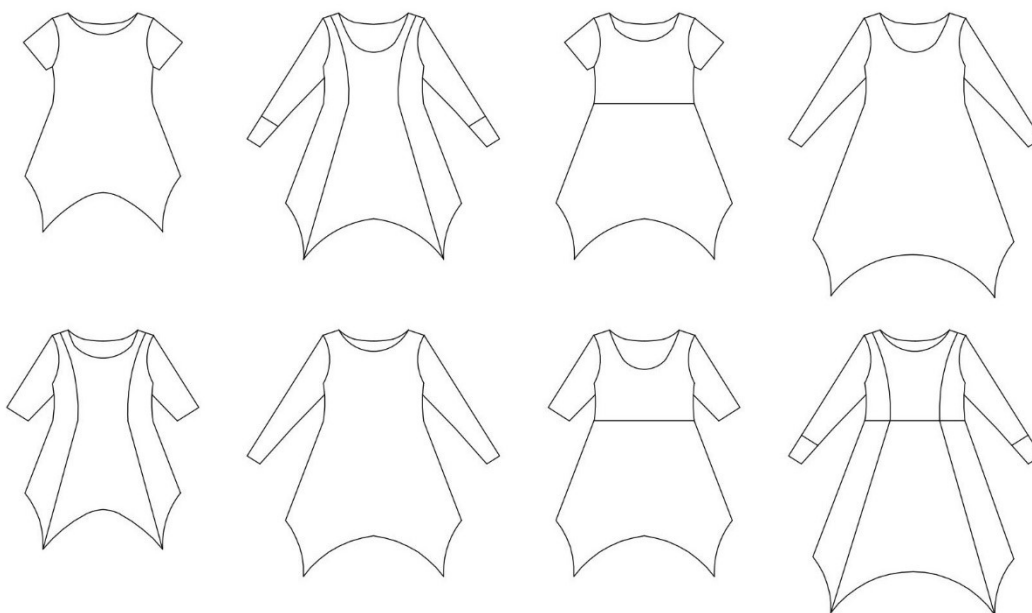
tutorial

SEAM ALLOWANCE/HEM NOT INCLUDED.

Choose your body length on the pattern.



Cut out the parts that you will use.





Stitch the shoulders.

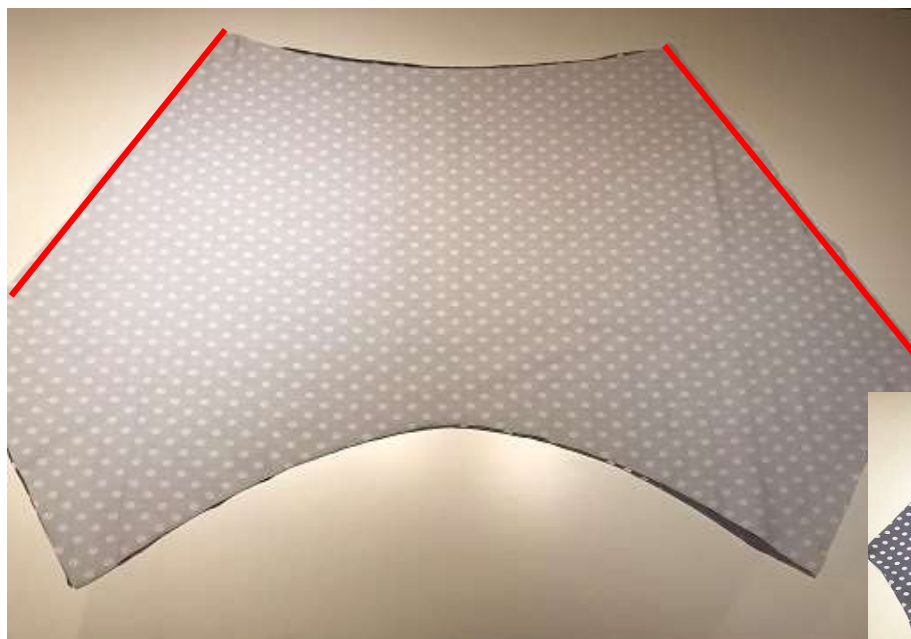
Knit binding: Stitch one shoulder. Knit bind the neckline. Stitch the other shoulder.



Hem the neckline.



Cut a small nick on the sleeve top and front mark. Match up the marks on the front piece and middle of the shoulder. Stitch the sleeve.



Place the skirt right sides together and stitch the side seams.



Hem the bottom. This can be done last. Fold and hem the sides first. Fold and hem the front/back sides for a cleaner corner.



Place the top inside the skirt with right sides together and stitch.



Hem the sleeves.



Fold the cuffs on the grain and stitch the edges. Fold the cuff and stitch right sides together.



Done!

pocket bag



Make a mark a few cm down from the waist on the side. Pin the pocket in place.



Stitch the pocket bag. Repeat with the other pocket bags (total 4).



Place the skirts right sides together. Stitch along the side seam and along the outer edge of the pocket.



Done!

knit binding



Finish the knit binding with a straight stitch across. Cut off one of them.



Fold the other over and stitch to secure it.



Cut of the excess. Done!