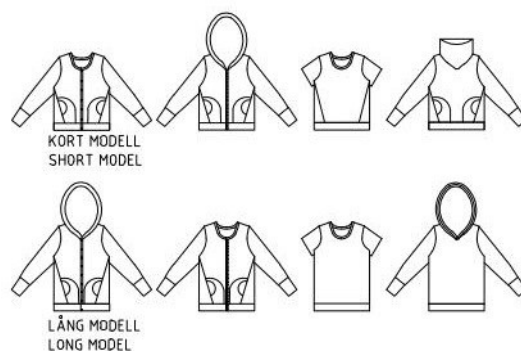


tutorial twisted

eu size 32 - 60



This pattern comes with many variations. There are two lengths, short or long sweatshirt/jacket. The sleeve can be made as short or long with cuffs. Collar or hood. Can be made as sweatshirt or jacket with buttons or zipper. With or without pockets. Seam allowance is not included except on a few parts where the instruction says so.



sewingheartdesign

<https://sewingheartdesign.wordpress.com/>

information

SALES LICENSE

Included with the patterns is a sales license. That means that you as individual who sews as a hobby or owns a business have the right to use the patterns to sell clothes. The license applies only for the buyer of the pattern and the license terms cannot be transferred to a third party. Which means that you cannot let another physical or legal person produce clothes on a large scale on your behalf.

SEAM ALLOWANCE/HEM NOT INCLUDED

You should add seam allowance on ALL patterns except where you intend to add binding or if the patterns says otherwise. I recommend that you read through the sewing instructions. Within it are instructions both in picture and text which will facilitate your sewing.

PAPER PATTERN

The paper patterns are sensitive to moisture and tear. Handle with care. On certain paper patterns the parts are split due to lack of space. Read the instructions carefully to know if they are to be stenciled and put together in a certain way. When you sell your pattern, you must destroy all copies that you have made.

PDF-PATTERN

Files are downloaded directly from your page on Etsy – after purchase they will be added to “purchases”. They are PDF-files and I recommend a pdf-reader with a setting to switch to “real size” and “automatic portrait/landscape” when printing. For example, Adobe Reader or PDF X-change. It is important to measure the control box so that it is exactly 30mm * 30mm or your garment might not end up the way you imagine. PDF is easy to print. Utilize the layers to only print the page you want to sew and cut it directly. There are arrows on the pattern and they should align towards each other when you put the pattern together. There is also an overview of the pattern where you can see how the different pages should be positioned.

Because a PDF-pattern is a digital product there are no refunds or returns.

The PDF-Pattern may not be copied and/or sold/donated to a third party.

LICENSE

When you purchase a pattern, you agree to an agreement with Sewingheartdesign that you accept the license with its terms and conditions. Violation of this agreement will be brought before the Swedish court.

I hope you will be satisfied with the pattern! Good luck with the sewing!

/Marie Sidén

Sewingheartdesign

fabric requirement

Fabric required is calculated with pre-washed fabric, 160 cm with, seam allowance included (1 cm) and hem (3 cm)

FABRIC REQUIREMENTS: 160 cm FABRIC WIDTH
BODY LENGTH: 150/170/190 cm

OBS! +ADD LENGTH FOR SLEEVE OF YOUR CHOISE

SWEATSHIRT	SHORT	LONG
32-44	60/60/65	65/70/75
46-60	60/65/65	70/75/75 +ADD LENGTH FOR SLEEVE

SLEEVE	SHORT	LONG
32-44	45	50/55/55
46-60	50	55/55/60

SIZE	HOOD	TURTLE NECK
32-44	45	60
46-60	50	70

KNIT	
32-44	100x55 cm
46-60	135x55 cm

POCKETS	
32-44	30 cm
46-60	30 cm

pages

Seam allowance is not included except on a few parts where the instruction says so. Choose your body length on the pattern.

SWEATSHIRT	s 4
TURTLE NECK	s 8
CUFFS	s 11
POCKETS	s 13
BUTTONBAR	s 15
ZIPPER	s 16
HOOD	s 23
PROTECTION STRIP	s 28

sweatshirt

Seam allowance is not included except on a few parts where the instruction says so. Choose your body length on the pattern.



Cut the parts you will be using.

Binding of the neck: Cut the neck with 0,7 cm seam allowance.



Hem the neck: Stitch the shoulders.

Binding of the neck: Stitch one shoulder. Bind the neck. Stitch the other shoulder.

Neck cuff: Stitch the short sides with right sides together. Fold the cuff lengthwise. Pin around the neck and stitch the cuff. Stitch the seam allowance with a straight stitch or a decorative stitch all the way around.



Stitch the sleeves.



Stitch the side seams.



Fold the cuffs and stitch the edges. Fold double and stitch to the sweatshirt.



Done!

turtle neck



Copy the pattern and cut on fold.



Cut all the parts.



Stitch the shoulders.



Stitch the side seam of the collar and fold.



Pin in the collar to the neck line, start at the front. Stitch together. Use vlieseline at the wrong side for attaching eyelets for draw string before the collar is stitched.

cuffs



Fold the cuffs at grainline and stitch. Fold double.



Place the cuffs inside the sleeve, right sides together, side seams meet, and stitch. Repeat with the waist cuff.



Done.

pockets



Trace the pocket opening and cut the front piece. Hem or bind the pocket opening.



Place the pocket with the right side on the front piece wrong side and pin in place.



Stitch with a decorative stitch.

button bar

Cut the parts incl the button bar. Cut small notches at the lines at the top and bottom to mark where to fold.

1. Cut a strip of vlieseline and press on the edge of the opening.
2. Fold the edge 2 cm and stitch with a decorative stitch.
3. Pocket: Trace the pocket opening and cut on the front piece. Bind or stitsch a narrow cuff to the opening. Cut the pocket and pin/glue in place on the wrong side of the front piece. Stitch with a decorative stitch.
4. Stitch the shoulders.
5. Stitch the sleeves.
6. Stitch the side seams.
7. Fold the waist cuff and stitch the short side. Fold right.
8. Place the cuff with the edges towards each other and stitch.
9. Neck cuff: Fold the cuff lengthwise and pin to the neck line, start at the opening of the jacket and stretch the rest. Let the pointed tip be a little outside of the jacket as it will disappear when stitched. Stitch the neck collar. Finish with a decorative stitch.
10. Lined hood: Stitch the outer seam of the hood, right sides together. Place the outer hood and the lining hood right sides together and stitch. Use vlieseline at the wrong side for attaching eyeletts for draw string before the hood is stitched. Turn the hood right. Pin the hood, with right sides together, starting at the middle back. Stitch a decorative stitch on the outside.
11. Fold the sleeve cuffs at grainline and stitch. Fold double, place in the sleeve, right sides together, match the side seams, and stitch.
12. Done!



zipper

Cut the parts you need, incl lining strips (not incl in the pattern) apx 4-5 cm wide and as long as the jackets opening. The jacket can also be made without lining and/or protection strip.

OBS! The height of the waist cuff needs to be adjusted to the length of the zipper.



Cut out all the parts.



Stitch the shoulders.
Pin/glue the sleeves and stitch.



Stitch the side seams.



Place the waist cuffs unstitched longer side on the front piece and stitch apx 7-8cm. Fold the cuff double, stretch and stitch the remaining gap, but leave the first/last 7-8cm unstitched.



Cut a small notch at the middle point of the waist cuff for easier placement of the zipper.



Pin/glue the zipper, right sides together, on the front piece. If you wish to have a protection strip, now is the time to add it. See p 28 for more instructions.



Fold the wrist cuff and lining up to the front piece and pin/glue in place. Make sure the seams match. Stitch with the zipper presser foot or with your regular presser foot as close as you can.



Fold the cuffs at grainline and stitch the longer side. Fold double.



Place the cuff inside the sleeve, right sides together, make sure the seams match, and stitch.

hood



Stitch the outer seam of the hood, right sides together.



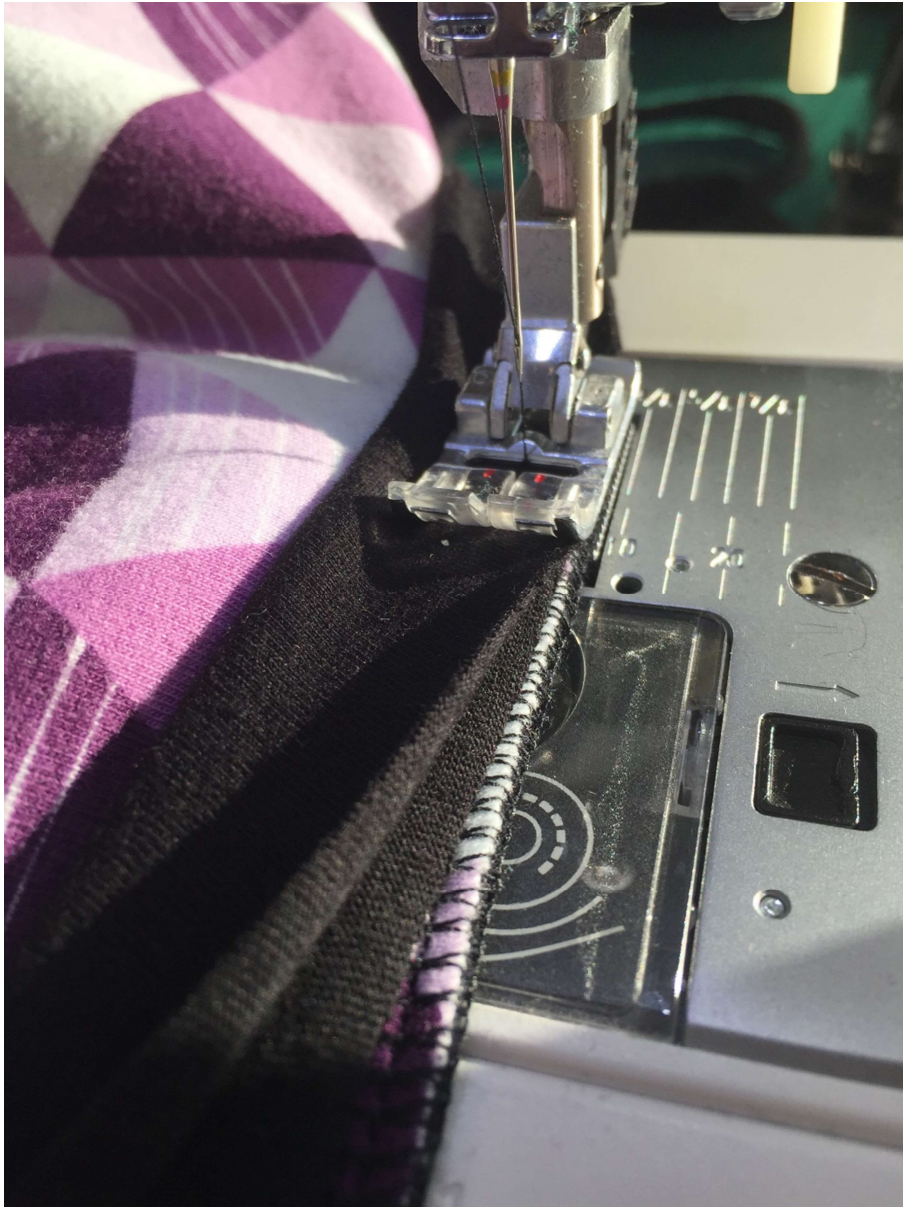
Put the hoods, right to right, and stitch the front edge. Eyelettes for drawstring are fitted with vlieseline before the collar is stitched.



Turn the hood right. Pin the hood, right to right, starting from the center of the neck. Secure the suspension strap before attaching the hood. Stitch the seams with a small straight stitch or stitch a decorative stitch all the way around.



Cut a neck opening strip that is about 80% of the neck opening and 4cm wide. Fold in the short side and fold it in length so that there will be a smooth edge at the beginning.



Place the strip with the folded edge against the hood / collar. Fit it towards the beginning of the neck opening. Sew it with a straight stitch in the same stitch as the collar / hood.



Fold down the strip against the jacket and sew a straight stitch at the edge of the neck opening strip.



Nice with the strip that hides the seam.



Done!

protection strip



Cut the strip. Fold it double, right to right, stitch the other side.



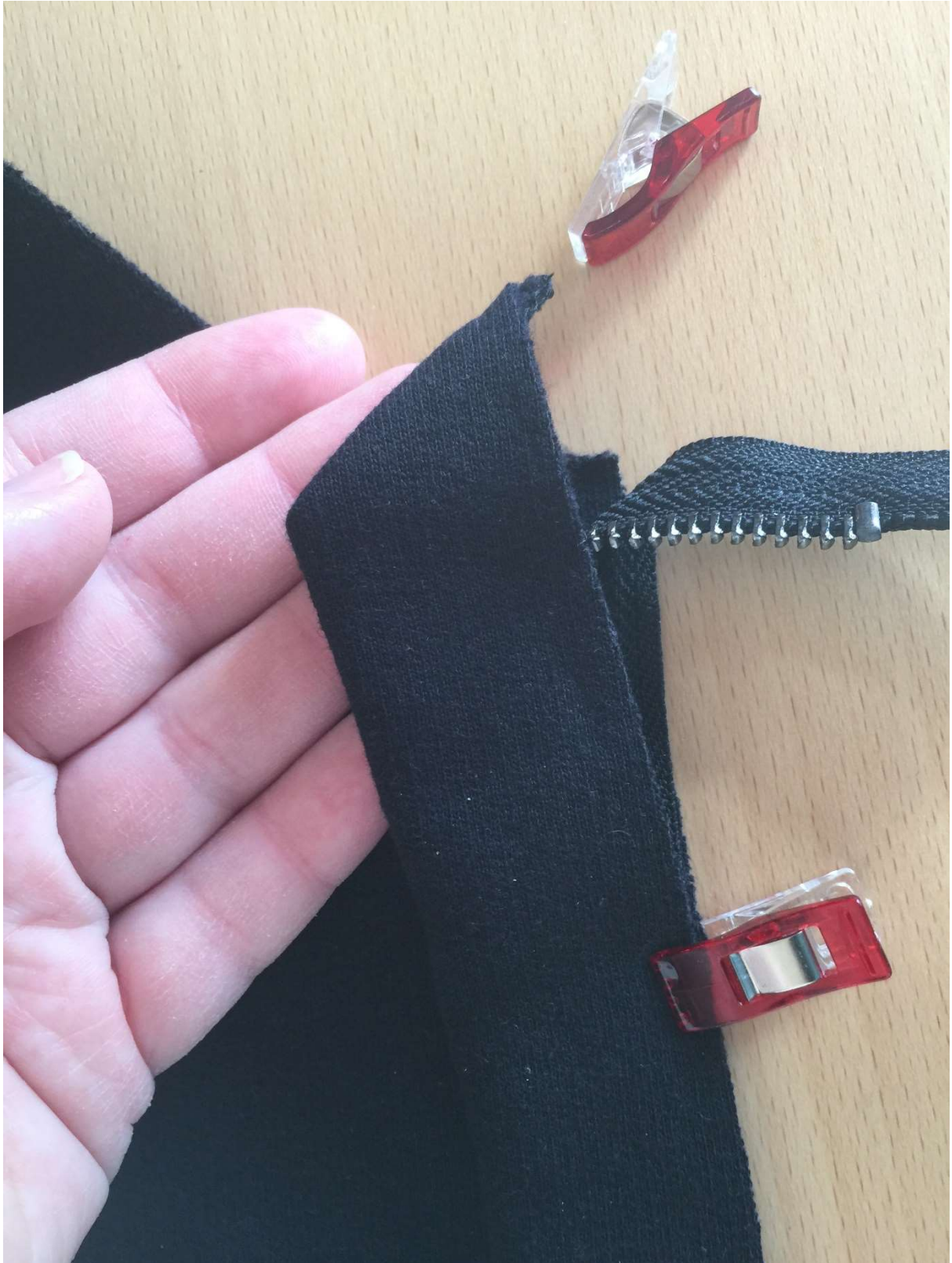
Fold it right.



Put the protective strip behind the zipper, start at the bottom.



At the top, fold the protective strip down the front of the zipper.
Draw a line down and sew a straight stitch on the protection list.



Turn the protection strip in and out.



Put the zipper down against the front piece.



Place the protective strip on top of the zipper, make sure that the fold is between the front piece and the zipper and stitch together.



This is how it will look when it's done.



Completed protection list.