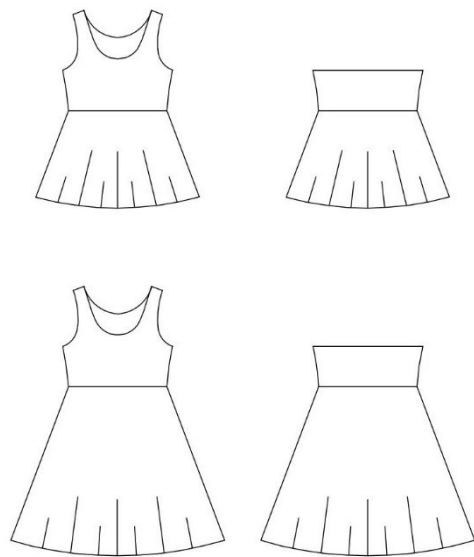


# tutorial

## spin around

size 32 - 60



This pattern comes with many variations. The top is either A tanktop or B tubtop. The skirt has two lengths.

Seam/hem allowance is not included.



sewingheartdesign

<https://sewingheartdesign.wordpress.com/>

# information

## **SALES LICENSE**

Included with the patterns is a sales license. That means that you as individual who sews as a hobby or owns a business have the right to use the patterns to sell clothes. The license applies only for the buyer of the pattern and the license terms cannot be transferred to a third party. Which means that you cannot let another physical or legal person produce clothes on a large scale on your behalf.

## **SEAM ALLOWANCE/HEM NOT INCLUDED**

You should add seam allowance on ALL patterns except where you intend to add binding or if the patterns says otherwise. I recommend that you read through the sewing instructions. Within it are instructions both in picture and text which will facilitate your sewing.

## **PAPER PATTERN**

The paper patterns are sensitive to moisture and tear. Handle with care. On certain paper patterns the parts are split due to lack of space. Read the instructions carefully to know if they are to be stenciled and put together in a certain way. When you sell your pattern, you must destroy all copies that you have made.

## **PDF-PATTERN**

Files are downloaded directly from your page on Etsy – after purchase they will be added to “purchases”. They are PDF-files and I recommend a pdf-reader with a setting to switch to “real size” and “automatic portrait/landscape” when printing. For example, Adobe Reader or PDF X-change. It is important to measure the control box so that it is exactly 30mm \* 30mm or your garment might not end up the way you imagine. PDF is easy to print. Utilize the layers to only print the page you want to sew and cut it directly. There are arrows on the pattern and they should align towards each other when you put the pattern together. There is also an overview of the pattern where you can see how the different pages should be positioned.

Because a PDF-pattern is a digital product there are no refunds or returns.

The PDF-Pattern may not be copied and/or sold/donated to a third party.

## **LICENSE**

When you purchase a pattern, you agree to an agreement with Sewingheartdesign that you accept the license with its terms and conditions. Violation of this agreement will be brought before the Swedish court.

I hope you will be satisfied with the pattern! Good luck with the sewing!

/Marie Sidén

Sewingheartdesign

# fabric requirement

Fabric required is calculated with pre-washed fabric, 160 cm with, seam allowance included (1 cm) and hem (3 cm)

*ALL MEASUREMENTS ARE CALCULATED FOR A BODY LENGTH OF 190CM.*

Spin Around:	32	36	40	44	48	52	56	60
Alt A short skirt	145	145	145	145	150	155	155	155 cm
Alt A long skirt	205	205	205	205	205	210	215	215 cm
Alt B short skirt	140	145	150	155	165	170	175	175 cm
Alt B long skirt	195	200	205	215	225	225	235	235 cm

## pages

SEAM/HEM ALLOWANCE NOT INCLUDED.

Choose your body length on the pattern.

ALT A - TANKTOP	s 4
KNIT BINDING	s 10
ALT B - TUBTOP	s 12
POCKETS	s 18

# alt a - tanktop

SEAM/HEM ALLOWANCE NOT INCLUDED.

Choose your body length on the pattern.



Cut the parts. Add seam/hem allowance.





Knit binding: Stitch one shoulder. Knit bind the neck. Stitch the other shoulder and bind both armholes.

Hemming: Sew together the front and back at the shoulders.



Knit binding: Stitch the other shoulder.





Knit binding: Bind both armholes. Stitch the side seams on the upper part.



Place the upper part straight sides together with the skirt. Pin in place. Stitch them together.





Hem the bottom. Done!

# knit binding



Finish off the bindings by doing a straight stitch across both ends.



Cut off one of the ends.





Fold over the other and straight stitch across.



Cut off the excess.



## alt b - tubtop

SEAM/HEM ALLOWANCE NOT INCLUDED.

Choose your body length on the pattern.



Cut the parts. Add seam/hem allowance.



Stitch the side seams on the skirt.



Fold the cuff on the grainline. Stich the cuff and fold it.





Place the parts as the picture shows and the fabric pattern of the tubtopp will be correct. Put the cuff inside the skirt with raw edges out.





Stitch down the cuff and fold out the skirt.





Hem the bottom of the skirt.  
Done!



# pockets



Knit bind the pocket opening.



Needle or glue the pocket straight side against the off side front piece. Stitch a decorative stitch along the pocket lining.