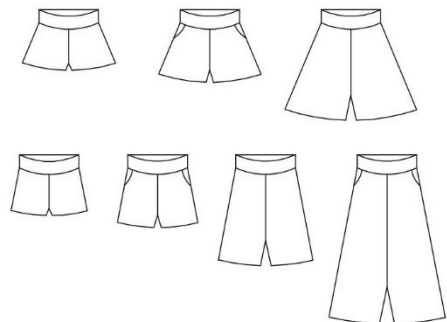


tutorial panther skirt

eu size 32 - 60



This pattern comes with many variations. The model is casually loose.
Viscose jersey stretches and can make the garment longer.

Seam/hem allowance is not included.



sewingheartdesign

<https://sewingheartdesign.wordpress.com/>

information

SALES LICENSE

Included with the patterns is a sales license. That means that you as individual who sews as a hobby or owns a business have the right to use the patterns to sell clothes. The license applies only for the buyer of the pattern and the license terms cannot be transferred to a third party. Which means that you cannot let another physical or legal person produce clothes on a large scale on your behalf.

SEAM ALLOWANCE/HEM NOT INCLUDED

You should add seam allowance on ALL patterns except where you intend to add binding or if the patterns says otherwise. I recommend that you read through the sewing instructions. Within it are instructions both in picture and text which will facilitate your sewing.

PAPER PATTERN

The paper patterns are sensitive to moisture and tear. Handle with care. On certain paper patterns the parts are split due to lack of space. Read the instructions carefully to know if they are to be stenciled and put together in a certain way. [When you sell your pattern, you must destroy all copies that you have made.](#)

PDF-PATTERN

Files are downloaded directly from your page on Etsy – after purchase they will be added to “purchases”. They are PDF-files and I recommend a pdf-reader with a setting to switch to “real size” and “automatic portrait/landscape” when printing. For example, Adobe Reader or PDF X-change. It is important to measure the control box so that it is exactly 30mm * 30mm or your garment might not end up the way you imagine. PDF is easy to print. Utilize the layers to only print the page you want to sew and cut it directly. There are arrows on the pattern and they should align towards each other when you put the pattern together. There is also an overview of the pattern where you can see how the different pages should be positioned.

Because a PDF-pattern is a digital product there are no refunds or returns.

[The PDF-Pattern may not be copied and/or sold/donated to a third party.](#)

LICENSE

When you purchase a pattern, you agree to an agreement with Sewingheartdesign that you accept the license with its terms and conditions. Violation of this agreement will be brought before the Swedish court.

I hope you will be satisfied with the pattern! Good luck with the sewing!

/Marie Sidén

Sewingheartdesign

fabric requirement

Fabric required is calculated with pre-washed fabric, 160 cm with, seam allowance included (1 cm) and hem (3 cm)

FABRIC REQUIREMENT SLIM (160 cm WIDTH) BODY LENGTH 150/170/190cm

SIZE	OVER KNEE	KNEE LENGTH	CAPRI	FOOT LENGTH
SLIM				
32-48	75/80/85	90/95/105	130/135/145	165/175/185 cm
50-60	150/160/170	180/190/210	260/275/290	330/350/370 cm
WIDE				
32-48	90/95/95	105/115/120	145/155/160	185/195/200 cm
50-60	190/200/200	220/240/250	260/320/330	380/400/410 cm

POCKETS IN OTHER FABRICS

32-60 35 cm

KNIT BINDING HIGHT: 30 cm

SIZE	32-36	38-42	44-50	52-60
WIDTH	80	85	90	95 cm

pages

SEAM/HEM ALLOWANCE NOT INCLUDED.

Choose your body length on the pattern.

Viscose jersey stretches and can make the garment longer.

FICKA s 4

BYXKJOL s 6

pocket

SEAM/HEM ALLOWANCE NOT INCLUDED.

Choose your body length on the pattern.
Viscose jersey stretches and can make the garment longer.



Bind the pocket openings.



Put the front piece with wrong side up. Glue or pin the pockets and place the pockets on edge with the pant piece on both sides.



Attach the pockets with a decorative stitch.

pant skirt

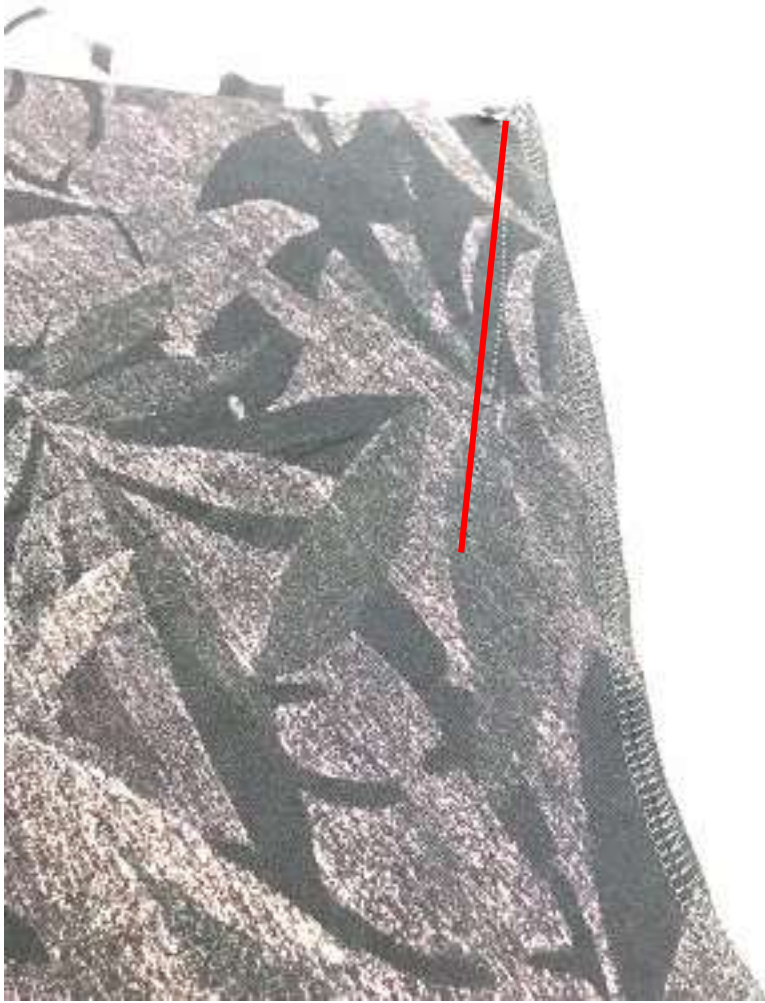
SEAM/HEM ALLOWANCE NOT INCLUDED.

Choose your body length on the pattern.

Viscose jersey stretches and can make the garment longer.



Place the front piece right sides together and stitch the crotch seam.
Repeat with back pieces.



Stitch a straight stitch acc to the markings on the pattern on both front pieces and back pieces.



With right sides together, sew the side seams.



Fold the fabric and make sure that the crotch seam fits. (Fabric right to right) Sew the inner leg seam together.



Fold the cuff and stitch it.



Fold it and put it inside the skirt with raw edges out.



Stitch down the cuffs and fold out the skirt.
Hem the bottom.



Done!