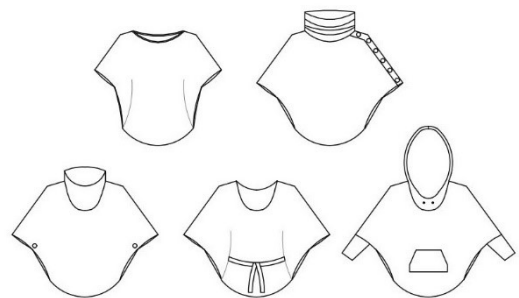


# tutorial butterfly

eu size xs – 4xl



This pattern includes many variations. With or without cuffs. Hood or collar. Two necklines. Kangaroo pocket. Pattern for both woven and stretch fabric like jersey, sweatshirt, woven viscose, softshell. The model is casually spacious.

Sömsmån ingår ej. Lägg till sömsmån för fäll.



sewingheartdesign

<https://sewingheartdesign.wordpress.com/>

# information

## **SALES LICENSE**

Included with the patterns is a sales license. That means that you as individual who sews as a hobby or owns a business have the right to use the patterns to sell clothes. The license applies only for the buyer of the pattern and the license terms cannot be transferred to a third party. Which means that you cannot let another physical or legal person produce clothes on a large scale on your behalf.

## **SEAM ALLOWANCE/HEM NOT INCLUDED**

You should add seam allowance on ALL patterns except where you intend to add binding or if the patterns says otherwise. I recommend that you read through the tutorial. Within it are instructions both in picture and text which will facilitate your sewing.

## **PAPER PATTERN**

The paper patterns are sensitive to moisture and tear. Handle with care. On certain paper patterns the parts are split due to lack of space. Read the instructions carefully to know if they are to be stenciled and put together in a certain way.

## **PDF-PATTERN**

Files are downloaded directly from your page on Etsy – after purchase they will be added to “purchases”. They are PDF-files and I recommend a pdf-reader with a setting to switch to “real size” and “automatic portrait/landscape” when printing. For example, Adobe Reader or PDF X-change. It is important to measure the control box so that it is exactly 30mm \* 30mm or your garment might not end up the way you imagine. PDF is easy to print. Utilize the layers to only print the page you want to sew and cut it directly. There are arrows on the pattern and they should align towards each other when you put the pattern together. There is also an overview of the pattern where you can see how the different pages should be positioned.

Because a PDF-pattern is a digital product there are no refunds or returns.

[The PDF-Pattern may not be copied and/or sold/donated to a third party.](#)

## **LICENSE**

When you purchase a pattern, you agree to an agreement with Sewingheartdesign that you accept the license with its terms and conditions. Violation of this agreement will be brought before the Swedish court.

I hope you will be satisfied with the pattern! Good luck with the sewing!

/Marie Sidén

Sewingheartdesign

# fabric requirement

Fabric usage is calculated on washed/shrunk fabric 160cm wide, including seam allowance (1cm) and hem (3cm).

ALL MEASUREMENTS ARE CALCULATED FOR A BODY LENGTH OF 190CM.

## **FINISHED GARMENT**

XS-XL	160 cm
2XL-4XL	170 cm

<b>LOOSE PARTS</b>	<b>CUFFS</b>	<b>HOOD*</b>	<b>COLLAR</b>	<b>KANGAROO POCKET</b>
XS-XL	50x30 cm	80x50	80x20	40x30
2XL-4XL	55x30 cm	80x50	90x20	45x30

\* x2 LINED HOOD

## pages

SEAM/HEM ALLOWANCE NOT INCLUDED.

Choose your body length on the pattern.  
Choose to hem/bind the neck line or attach hood/collar.

TOP	s 4
COLLAR	s 6
CUFFS	s 8
SIDE SEAM	s 13
HOOD	s 17

# top

SEAM/HEM ALLOWANCE NOT INCLUDED.

VISCOSEJERSEY: Add a piece of woven fabric in the neckline to avoid it from stretching.



Cut out the parts you are going to use.



Stitch the shoulders.





Hem the neck: Stitch both shoulders.

Bind the neck: Stitch one shoulder, bind the neck, stitch the other shoulder.



Hem the bottom.

# collar



Fold the collar in half and stitch the edge.



Put the collar and top right side together. Pin in four places.



Stitch together.

# cuffs

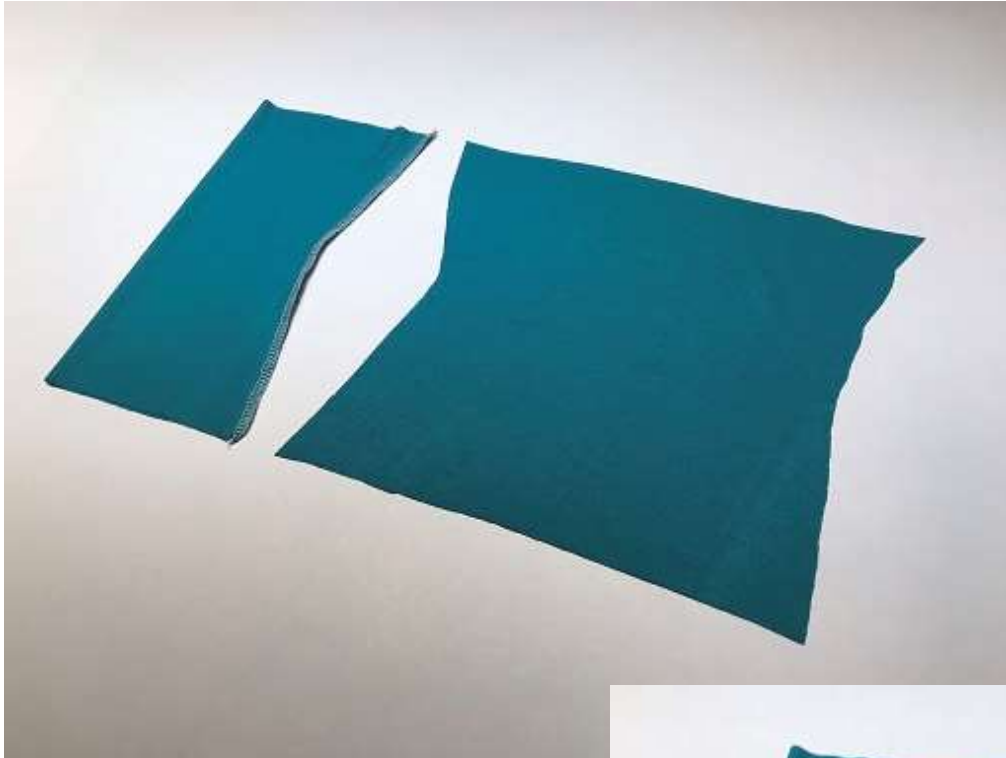


Stitch front and back pieces together. Place the pattern on to the wrong side and cut a mark for the sleeve.

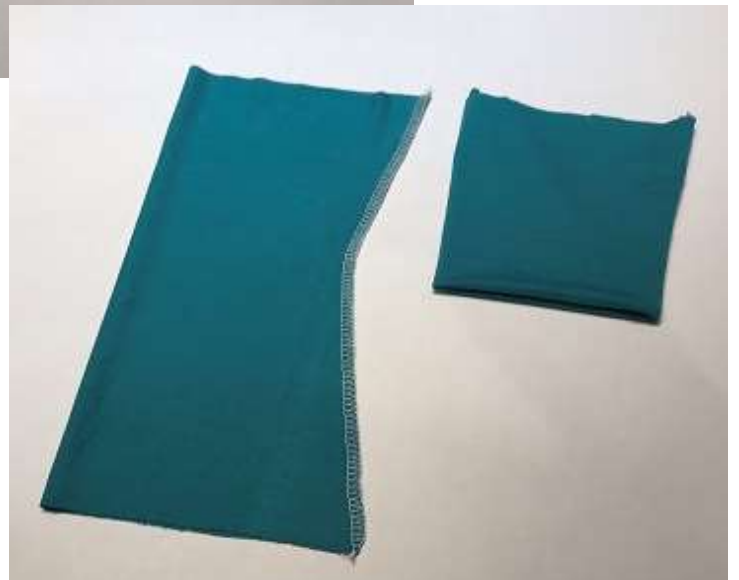




With right sides together stitch a straight stitch from the mark for the sleeve and apx 2-5 cm along the edge.



Fold the cuffs on the grainline and stitch the side. Fold in half.





Put it in the armhole with right sides together and stitch.



Hem the bottom. Done!



# side seam



Place front and back pieces with right sides together and stitch the shoulders.



There are two lines on the pattern. One for jersey/stretch fabrics and one wider for woven fabrics. Make sure your measurements fit the pattern when using woven fabric.



Fold the pattern along the line of your choosing.



Mark the line with chalk and pin the both layers, right sides together.





Stitch from the right side. Use a stretch stitch for stretch fabrics.



Hem the bottom.



Done!



# hood



*At the left:* Facing and hoodie.

Attatch facing/strengthening in the bottom corner of the hoodie and attatch\_eyelets if chosen to use them. Eyelets for cords should be mounted with Fusible interfacing before the hoodie/collar is stitched.

Put the pieces on the right sides and stitch the out heads outer curve on both sides.



*Picture: Hood with interfacing.*

It might be easier to attach the cord in the hoodie already. Stitch the middle of the cord on top of the hoodie, using a straight stitch. (this will keep the cord in place)



*Picture: Cut the corner if the fabric is thick.*

Facing: Put the facing on the right side with the hoodie and stitch the edge front.

Lined hoodie: Put the hoodies right sides together and stitch the front. Reverse inside out.



Put the pieces on the right sides and stitch the outer edges. Pin the right sides and begin in the center back. Stitch the neck edges.

Done!