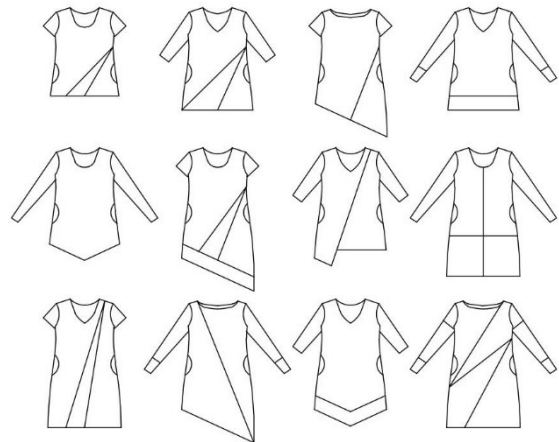


tutorial

draw a line

eu sizes 32 - 60



This pattern has got a number of varieties. The lengths are top, tunic or dress. The sleeve can be made short, $\frac{3}{4}$ or long with/without cuffs. Pockets. Regular cleavage, v-shape or boat neck.

Seam allowance is not included.



sewingheartdesign

<https://sewingheartdesign.wordpress.com/>

information

SALES LICENSE

Included with the patterns is a sales license. That means that you as individual who sews as a hobby or owns a business have the right to use the patterns to sell clothes. The license applies only for the buyer of the pattern and the license terms cannot be transferred to a third party. Which means that you cannot let another physical or legal person produce clothes on a large scale on your behalf.

SEAM ALLOWANCE/HEM NOT INCLUDED

You should add seam allowance on ALL patterns except where you intend to add binding or if the patterns says otherwise. I recommend that you read through the sewing instructions. Within it are instructions both in picture and text which will facilitate your sewing.

PAPER PATTERN

The paper patterns are sensitive to moisture and tear. Handle with care. On certain paper patterns the parts are split due to lack of space. Read the instructions carefully to know if they are to be stenciled and put together in a certain way. [When you sell your pattern, you must destroy all copies that you have made.](#)

PDF-PATTERN

Files are downloaded directly from your page on Etsy – after purchase they will be added to “purchases”. They are PDF-files and I recommend a pdf-reader with a setting to switch to “real size” and “automatic portrait/landscape” when printing. For example, Adobe Reader or PDF X-change. It is important to measure the control box so that it is exactly 30mm * 30mm or your garment might not end up the way you imagine. PDF is easy to print. Utilize the layers to only print the page you want to sew and cut it directly. There are arrows on the pattern and they should align towards each other when you put the pattern together. There is also an overview of the pattern where you can see how the different pages should be positioned.

Because a PDF-pattern is a digital product there are no refunds or returns.

[The PDF-Pattern may not be copied and/or sold/donated to a third party.](#)

LICENSE

When you purchase a pattern, you agree to an agreement with Sewingheartdesign that you accept the license with its terms and conditions. Violation of this agreement will be brought before the Swedish court.

I hope you will be satisfied with the pattern! Good luck with the sewing!

/Marie Sidén

Sewingheartdesign

fabric requirements

Fabric usage is calculated on washed/shrunk fabric 160cm wide, including seam allowance (1 cm) and hem (3cm).

ALL MEASUREMENTS ARE CALCULATED FOR A BODY LENGTH OF 190CM.

LOOSE PARTS	SIZE	BODY LENGTH
		150/170/190cm
TOP	32-50	70/75/75 cm
TOP	52-60	140/150/150 cm *
TUNIC	32-50	80/85/90 cm
TUNIC	52-60	160/170/180 cm *
POINTED TUNIC	32-50	120/125/130 cm
POINTED TUNIC	52-60	240/250/260 cm *
KNEE LENGHT	32-50	100/105/110 cm
KNEE LENGHT	52-60	200/210/220 cm *

* (FABRIC FOR SLEEVE)

SLEEVES

SIZE	SHORT	3/4	LONG W CUFFS	LONG
32-50	20 cm	50/55/55 cm	55/60/65 cm	65/70/75 cm
52-60	25 cm	50/55/55 cm	60/65/65 cm	70/75/75 cm

POCKETS IN OTHER FABRICS

32-60 30 cm

KNIT BINDING

CUFFS 55x20 cm

pages

SEAM/HEM ALLOWANCE NOT INCLUDED.

Choose your body length on the pattern.

TUTORIAL	s 4
KNIT BINDING	s 12
POCKETS	s 14

tutorial

SEAM ALLOWANCE/HEM NOT INCLUDED.

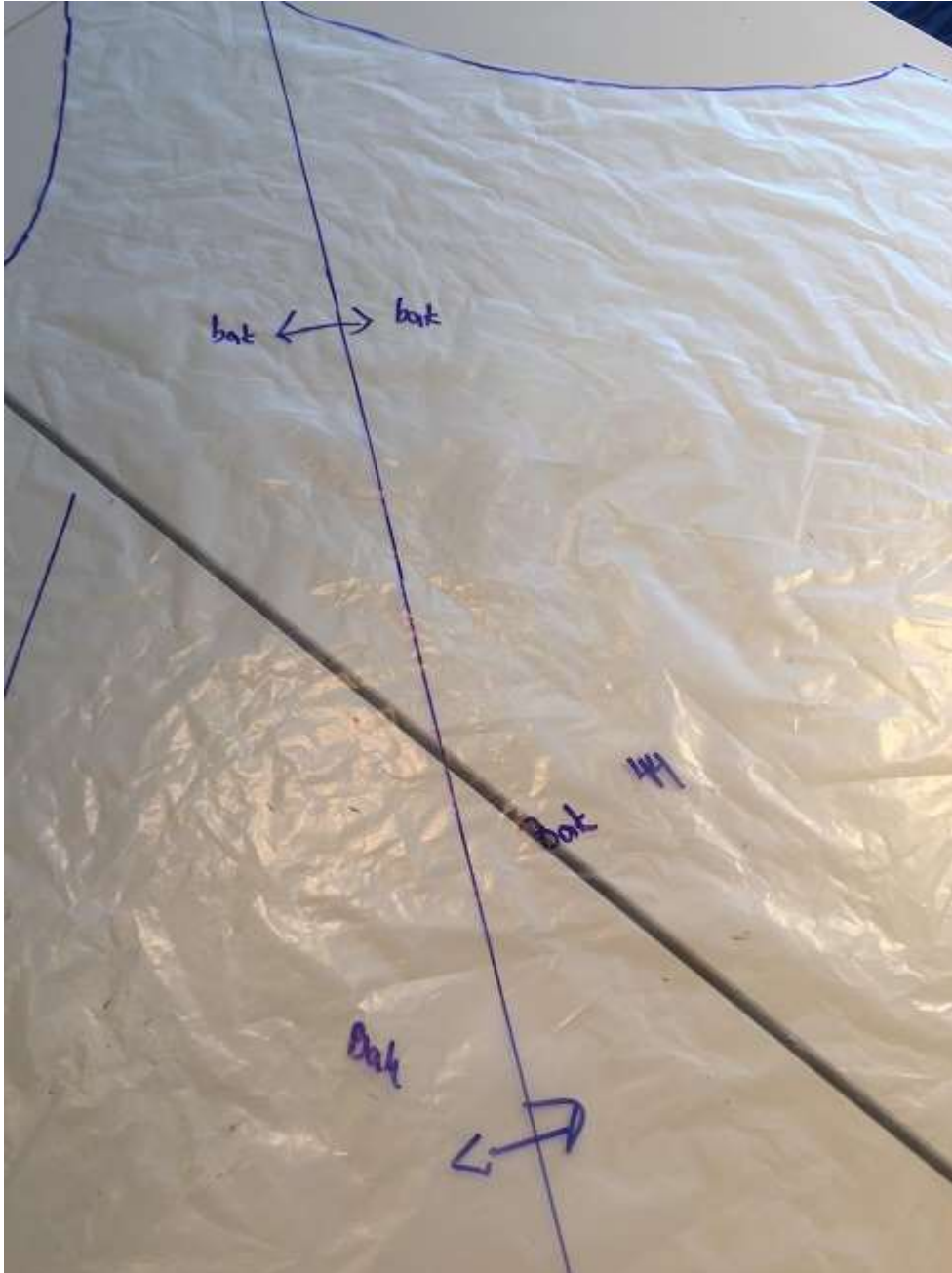
Choose your body length on the pattern.



Draw a line from the mark under the armpit (markings on both sides) or from the high cleavage down to a crossing of your choosing.



Draw your lines.



Carefully mark which part is which and the grainline. Cut the parts. Add seam/hem allowance.



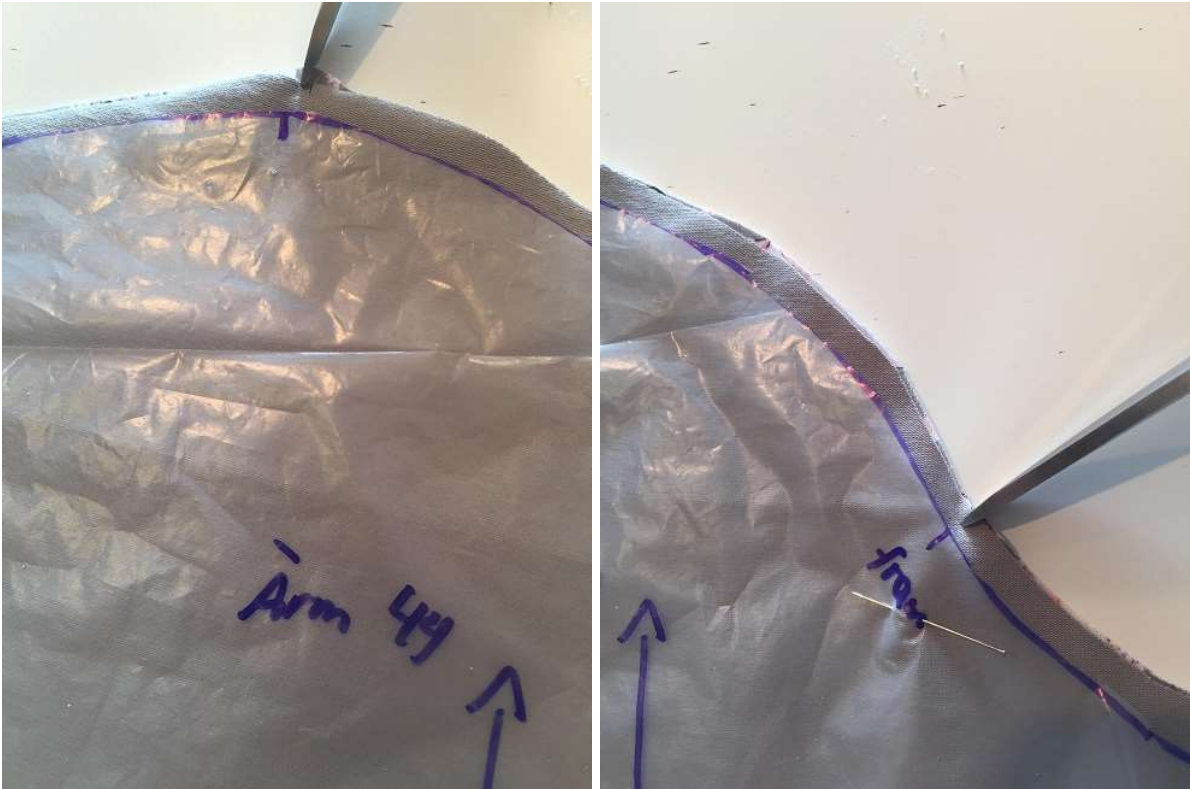
Stitch the parts if they are divided.



Press the seams and sew a decorative stitch.



Stitch the shoulders.
Knit binding: Stitch one shoulder. Knit bind the neckline. Stitch the other shoulder.



Cut a small nick on the sleeve top and front mark.



Match up the marks on the front piece and middle of the shoulder. Stitch the sleeve.



Stitch the side seams.



Knit bind (or hem) the neckline and sleeves.



Hem the bottom.



Done!

knit binding



Finish the knit binding with a straight stitch across. Cut off one of them.



Fold the other over and stitch to secure it.



Cut of the excess. Done!

pockets



Bind the pocket opening.



Pin or glue the pocket to the front piece. The pocket's right side should face the front piece's back side. Stitch a decorative seam to sew the pocket onto the skirt.